

Autodromo di Monza

On October 03 - 04

## Free practice 2 RESULTS

Ord.	Nº	Entrant	Nat.	Driver	Nat.	Vehicle	Laps	Best	Time	Gap	Interval	Km/h
1	9	LUCILE CYPRIANO	FRA	Lucile Cypriano	FRA	SEAT Leon Cup Racer MK3	12	9	2'15.109			154.355
2	34	STIAN PAULSEN RACING	NOR	Stian Paulsen	NOR	SEAT Leon Cup Racer MK3	13	10	2'15.195	0"086	0"086	154.257
3	3	JULIEN BRICHÉ	FRA	Julien Briché	FRA	SEAT Leon Cup Racer MK3	13	7	2'15.631	0"522	0"436	153.761
4	2	BAPORO MOTORSPORT	PRT	Manuel Gao	PRT	SEAT Leon Cup Racer MK3	11	8	2'16.234	1"125	0"603	153.081
5	5	THIBAUT MOURGUES	FRA	Thibaut Mourgues	FRA	SEAT Leon Cup Racer MK3	13	10	2'16.763	1"654	0"529	152.489
6	6	PCR SPORT	ESP	Mikel Azcona	ESP	SEAT Leon Cup Racer MK3	5	4	2'17.375	2"266	0"612	151.809
7	8	WOLF-POWER RACING	RSA	Shane Anthony Williams	RSA	SEAT Leon Cup Racer MK3	13	12	2'17.405	2"296	0"030	151.776
8	1	BAPORO MOTORSPORT	ESP	Pol Rosell	ESP	SEAT Leon Cup Racer MK3	12	11	2'17.643	2"534	0"238	151.514
9	28	MONLAU COMPETICIÓN	ESP	Fran Rueda	ESP	SEAT Leon Cup Racer MK3	12	10	2'18.307	3"198	0"664	150.786
10	24	TARGET, SRL	CHE	Andrina Gugger	CHE	SEAT Leon Cup Racer MK3	12	8	2'18.393	3"284	0"086	150.693
11	61	SEAT AUSTRIA	AUT	Mario Dablender	AUT	SEAT Leon Cup Racer MK3	12	6	2'18.475	3"366	0"082	150.603
12	33	TARGET, SRL	ESP	Jordi Oriola	ESP	SEAT Leon Cup Racer MK3	13	10	2'18.483	3"374	0"008	150.595
13	22	BAPORO MOTORSPORT	GBR	Alexander Morgan	GBR	SEAT Leon Cup Racer MK3	14	10	2'18.672	3"563	0"189	150.389
14	20	LOURENÇO BEIRÃO	PRT	Lourenço Beirão Da Veiga	PRT	SEAT Leon Cup Racer MK3	11	7	2'19.272	4"163	0"600	149.742
15	17	LEIN RACING	SRB	Mladen Lalusic	SRB	SEAT Leon Cup Racer MK3	14	7	2'19.402	4"293	0"130	149.602
16	11	TARGET, SRL	AUT	Jürgen Schmarl	AUT	SEAT Leon Cup Racer MK3	12	8	2'19.426	4"317	0"024	149.576
17	77	JEAN-LAURENT NAVARRO	FRA	Jean-Laurent Navarro	FRA	SEAT Leon Cup Racer MK3	11	10	2'19.637	4"528	0"211	149.350
18	73	MATEU CLEMENT	FRA	Mateu Clement	FRA	SEAT Leon Cup Racer MK3	14	10	2'19.731	4"622	0"094	149.250
19	19	B3 HUNGARY KFT	HUN	Attila Tassi	HUN	SEAT Leon Cup Racer MK3	12	11	2'19.957	4"848	0"226	149.009
20	12	LEIN RACING	MNE	Dejan Bulatovic	MNE	SEAT Leon Cup Racer MK3	12	11	2'19.960	4"851	0"003	149.005
21	87	B3 HUNGARY KFT	HUN	Edina Bús	HUN	SEAT Leon Cup Racer MK3	13	8	2'20.088	4"979	0"128	148.869
22	4	MONLAU COMPETICIÓN	ESP	David Cebrian	ESP	SEAT Leon Cup Racer MK3	12	9	2'20.492	5"383	0"404	148.441
23	21	MARIE BAUS-COPPENS	FRA	Marie Baus - Coppens	FRA	SEAT Leon Cup Racer MK3	13	11	2'20.502	5"393	0"010	148.431
24	10	TARGET, SRL	CRI	Mauricio Hernandez	CRI	SEAT Leon Cup Racer MK3	12	8	2'20.638	5"529	0"136	148.287
25	88	FINLAY CROCKER	GBR	Finlay Crocker	GBR	SEAT Leon Cup Racer MK3	12	6	2'20.676	5"567	0"038	148.247
26	23	STEFANO ZANINI	MCO	Stefano Zanini	MCO	SEAT Leon Cup Racer MK3	13	11	2'21.011	5"902	0"335	147.895
27	67	MARCO PELLEGRINI	ITA	Marco Pellegrini	ITA	SEAT Leon Cup Racer MK3	14	12	2'21.071	5"962	0"060	147.832

Car 1 lap time 2'18.537 deleted track limits  
 Car 3 lap time 2'16.623 deleted track limits  
 Car 4 lap time 2'18.219 deleted track limits  
 Car 5 lap time 2'16.367 deleted track limits  
 Car 10 lap times 2'22.860 and 2'20.711 deleted track limits  
 Car 22 lap time 2'18.667 deleted track limits  
 Car 33 lap time 2'19.326 deleted track limits  
 Car 73 lap time 2'18.577 deleted track limits

Autodromo di Monza on October 02, 2015

At 15:45

RACE DIRECTOR

TIMEKEEPER

On October 03 - 04  
Autodromo di Monza

### LAP ANALYSIS Free practice 2

Number	1			2			3			4			5			6		
	Lap Time	Partial	Speed	Lap Time	Partial	Speed	Lap Time	Partial	Speed	Lap Time	Partial	Speed	Lap Time	Partial	Speed	Lap Time	Partial	Speed
1 <sup>a</sup> - 1	0'44.945	0'44.945	186.207	0'48.857	0'48.857	154.950	0'44.889	0'44.889	197.441	0'43.975	0'43.975	195.299	0'44.103	0'44.103	198.896	0'43.455	0'43.455	187.500
1 <sup>a</sup> - 2	1'33.333	0'48.388		1'40.668	0'51.811		1'32.554	0'47.665		1'32.287	0'48.312		1'32.485	0'48.382		1'32.204	0'48.749	
1 <sup>a</sup> - 3	2'21.034	0'47.701		2'40.224	0'59.556	PIT	2'19.433	0'46.879		2'21.212	0'48.925		2'20.458	0'47.973		2'19.418	0'47.214	
2 <sup>a</sup> - 1	0'45.509	0'45.509	204.934	6'17.182	6'17.182	170.617	0'42.942	0'42.942	193.549	0'44.063	0'44.063	183.051	0'43.179	0'43.179	204.546	0'45.310	0'45.310	204.159
2 <sup>a</sup> - 2	1'34.693	0'49.184		7'05.661	0'48.479		1'29.899	0'46.957		1'32.524	0'48.461		1'29.105	0'45.926		1'33.497	0'48.187	
2 <sup>a</sup> - 3	2'22.716	0'48.023		7'54.646	0'48.985		2'16.474	0'46.575		2'20.857	0'48.333		2'16.367	0'47.262		2'21.400	0'47.903	
3 <sup>a</sup> - 1	0'43.181	0'43.181	182.125	0'42.884	0'42.884	201.870	0'42.204	0'42.204	197.441	0'52.920	0'52.920	178.808	0'43.474	0'43.474	195.299	0'43.359	0'43.359	210.117
3 <sup>a</sup> - 2	1'32.433	0'49.252		1'30.925	0'48.041		1'29.307	0'47.103		1'41.231	0'48.311		1'30.635	0'47.161		1'30.339	0'46.980	
3 <sup>a</sup> - 3	2'33.688	1'01.255	PIT	2'18.804	0'47.879		2'16.104	0'46.797		2'29.697	0'48.466		2'18.313	0'47.678		2'17.375	0'47.036	
4 <sup>a</sup> - 1	5'10.043	5'10.043	173.077	0'42.726	0'42.726	202.627	0'56.762	0'56.762	200.001	0'44.444	0'44.444	172.249	0'43.374	0'43.374	210.527	0'43.456	0'43.456	204.934
4 <sup>a</sup> - 2	5'59.841	0'49.798		1'30.246	0'47.520		1'46.104	0'49.342		1'33.247	0'48.803		1'30.641	0'47.267		1'31.433	0'47.977	
4 <sup>a</sup> - 3	6'47.746	0'47.905		2'18.150	0'47.904		2'35.082	0'48.978		2'21.340	0'48.093		2'17.958	0'47.317		2'28.817	0'57.384	PIT
5 <sup>a</sup> - 1	0'42.874	0'42.874	200.001	0'42.772	0'42.772	200.744	0'42.835	0'42.835	202.248	0'43.913	0'43.913	179.701	0'43.353	0'43.353	203.390			
5 <sup>a</sup> - 2	1'30.601	0'47.727		1'29.763	0'46.991		1'29.642	0'46.807		1'32.606	0'48.693		1'30.853	0'47.500				
5 <sup>a</sup> - 3	2'18.537	0'47.936		2'16.822	0'47.059		2'16.038	0'46.396		2'27.438	0'54.832	PIT	2'18.144	0'47.291				
6 <sup>a</sup> - 1	0'43.232	0'43.232	187.500	0'42.486	0'42.486	200.001	0'42.778	0'42.778	204.546	4'45.772	4'45.772	172.524	0'44.512	0'44.512	175.610			
6 <sup>a</sup> - 2	1'32.034	0'48.802		1'29.273	0'46.787		1'29.337	0'46.559		5'34.494	0'48.722		1'32.373	0'47.861				
6 <sup>a</sup> - 3	2'20.117	0'48.083		2'16.546	0'47.273		2'15.631	0'46.294		6'23.545	0'49.051		2'27.169	0'54.796	PIT			
7 <sup>a</sup> - 1	0'43.278	0'43.278	180.603	0'42.086	0'42.086	209.709	0'42.823	0'42.823	201.493	0'43.670	0'43.670	192.514	2'16.138	2'16.138	158.358			
7 <sup>a</sup> - 2	1'30.771	0'47.493		1'29.053	0'46.967		1'29.547	0'46.724		1'32.139	0'48.469		3'06.537	0'50.399				
7 <sup>a</sup> - 3	2'18.756	0'47.985		2'16.234	0'47.181		2'15.823	0'46.276		2'20.885	0'48.746		3'54.203	0'47.666				
8 <sup>a</sup> - 1	0'42.888	0'42.888	186.852	0'47.819	0'47.819	195.653	0'42.607	0'42.607	200.001	0'43.866	0'43.866	196.722	0'44.794	0'44.794	199.631			
8 <sup>a</sup> - 2	1'30.045	0'47.157		1'39.934	0'52.115		1'32.183	0'49.576		1'32.393	0'48.527		1'32.407	0'47.613				
8 <sup>a</sup> - 3	2'17.887	0'47.842		2'27.338	0'47.404		2'27.389	0'55.206	PIT	2'20.492	0'48.099		2'20.218	0'47.811				
9 <sup>a</sup> - 1	0'43.116	0'43.116	183.362	0'42.589	0'42.589	201.870	3'53.806	3'53.806	154.728	0'43.997	0'43.997	178.218	0'42.666	0'42.666	204.546			
9 <sup>a</sup> - 2	1'33.002	0'49.886		1'29.545	0'46.956		4'41.219	0'47.413		1'32.982	0'48.985		1'29.815	0'47.149				
9 <sup>a</sup> - 3	2'20.985	0'47.983		2'16.619	0'47.074		5'27.747	0'46.528		2'20.972	0'47.990		2'16.763	0'46.948				
10 <sup>a</sup> - 1	0'43.221	0'43.221	186.852	0'44.729	0'44.729	159.058	0'42.279	0'42.279	216.868	0'43.263	0'43.263	190.813	0'43.156	0'43.156	200.744			
10 <sup>a</sup> - 2	1'30.340	0'47.119		1'34.043	0'49.314		1'29.642	0'47.363		1'30.158	0'46.895		1'30.395	0'47.239				
10 <sup>a</sup> - 3	2'17.643	0'47.303		2'37.121	1'03.078	PIT	2'16.065	0'46.423		2'18.219	0'48.061		2'17.321	0'46.926				
11 <sup>a</sup> - 1	0'46.678	0'46.678	159.764				0'42.769	0'42.769	203.774	0'46.980	0'46.980	168.750	0'42.652	0'42.652	203.008			
11 <sup>a</sup> - 2	1'37.353	0'50.675					1'29.228	0'46.459		1'37.192	0'50.212		1'30.889	0'48.237				
11 <sup>a</sup> - 3	2'51.717	1'14.364	PIT				2'15.623	0'46.395		2'46.670	1'09.478	PIT	2'17.642	0'46.753				
12 <sup>a</sup> - 1							0'48.261	0'48.261	164.635				0'50.966	0'50.966	152.975			
12 <sup>a</sup> - 2							1'42.593	0'54.332					1'45.221	0'54.255				
12 <sup>a</sup> - 3							2'52.007	1'09.414	PIT				2'50.787	1'05.566	PIT			
13 <sup>a</sup> - 1																		
13 <sup>a</sup> - 2																		
13 <sup>a</sup> - 3																		

Ideal Lap	
0'42.874	0'42.874
1'29.993	0'47.119
2'17.296	0'47.303

Ideal Lap	
0'42.086	0'42.086
1'28.873	0'46.787
2'15.932	0'47.059

Ideal Lap	
0'42.204	0'42.204
1'28.663	0'46.459
2'14.939	0'46.276

Ideal Lap	
0'43.263	0'43.263
1'30.158	0'46.895
2'18.148	0'47.990

Ideal Lap	
0'42.652	0'42.652
1'28.578	0'45.926
2'15.331	0'46.753

Ideal Lap	
0'43.359	0'43.359
1'30.339	0'46.980
2'17.375	0'47.036

Ideal Best Lap	
0'42.086	0'42.086
1'26.903	0'44.817
2'13.141	0'46.238



**LAP ANALYSIS Free practice 2**

Number	8			9			10			11			12			17		
	Lap Time	Partial	Speed	Lap Time	Partial	Speed	Lap Time	Partial	Speed	Lap Time	Partial	Speed	Lap Time	Partial	Speed	Lap Time	Partial	Speed
1ª - 1	0'44.253	0'44.253	166.667	0'43.531	0'43.531	186.207	0'57.346	0'57.346	118.943	0'46.299	0'46.299	186.529	0'46.782	0'46.782	159.293	0'49.636	0'49.636	193.896
1ª - 2	1'32.388	0'48.135		1'30.159	0'46.628		1'49.880	0'52.534		1'36.191	0'49.892		1'35.784	0'49.002		1'38.037	0'48.401	
1ª - 3	2'20.583	0'48.195		2'17.463	0'47.304		2'47.238	0'57.358		2'26.416	0'50.225		2'24.827	0'49.043		2'26.814	0'48.777	
2ª - 1	0'43.776	0'43.776	173.355	0'42.950	0'42.950	184.301	0'44.688	0'44.688	175.610	0'45.614	0'45.614	182.742	0'50.285	0'50.285	194.946	0'44.498	0'44.498	182.742
2ª - 2	1'31.099	0'47.323		1'29.862	0'46.912		1'34.145	0'49.457		1'35.489	0'49.875		1'46.617	0'56.332		1'32.788	0'48.290	
2ª - 3	2'19.217	0'48.118		2'17.738	0'47.876		2'22.860	0'48.715		2'25.330	0'49.841		2'39.706	0'53.089		2'20.932	0'48.144	
3ª - 1	0'42.953	0'42.953	189.142	0'42.665	0'42.665	194.946	0'43.984	0'43.984	180.905	0'44.247	0'44.247	181.513	0'45.315	0'45.315	162.651	0'43.389	0'43.389	181.208
3ª - 2	1'29.826	0'46.873		1'29.524	0'46.859		1'32.273	0'48.289		1'32.067	0'47.820		1'34.106	0'48.791		1'38.200	0'54.811	
3ª - 3	2'17.617	0'47.791		2'16.308	0'46.784		2'20.711	0'48.438		2'20.946	0'48.879		2'22.915	0'48.809		2'26.900	0'48.700	
4ª - 1	0'43.181	0'43.181	179.105	0'42.751	0'42.751	192.171	0'45.281	0'45.281	173.355	0'43.649	0'43.649	193.549	0'43.940	0'43.940	172.801	0'44.071	0'44.071	184.932
4ª - 2	1'30.883	0'47.702		1'29.100	0'46.349		1'33.373	0'48.092		1'31.335	0'47.686		1'32.170	0'48.230		1'32.926	0'48.855	
4ª - 3	2'18.294	0'47.411		2'16.306	0'47.206		2'21.846	0'48.473		2'20.168	0'48.833		2'21.478	0'49.308		2'21.740	0'48.814	
5ª - 1	0'43.292	0'43.292	183.674	0'43.150	0'43.150	192.858	0'44.268	0'44.268	166.154	0'44.066	0'44.066	183.674	0'44.401	0'44.401	176.471	0'43.822	0'43.822	185.249
5ª - 2	1'30.317	0'47.025		1'30.283	0'47.133		1'33.683	0'49.415		1'33.219	0'49.153		1'32.827	0'48.426		1'32.042	0'48.220	
5ª - 3	2'25.239	0'54.922	PIT	2'26.701	0'56.418	PIT	2'28.632	0'54.949	PIT	2'30.684	0'57.465	PIT	2'39.798	1'06.971	PIT	2'20.558	0'48.516	
6ª - 1	3'22.466	3'22.466	175.041	2'48.256	2'48.256	166.154	3'46.416	3'46.416	156.296	5'11.521	5'11.521	127.209	3'53.403	3'53.403	153.847	0'42.101	0'42.101	206.107
6ª - 2	4'09.531	0'47.065		3'35.239	0'46.983		4'35.504	0'49.088		6'03.964	0'52.443		4'42.438	0'49.035		1'30.671	0'48.570	
6ª - 3	4'56.971	0'47.440		4'22.676	0'47.437		5'23.696	0'48.192		6'52.931	0'48.967		5'32.545	0'50.107		2'19.402	0'48.731	
7ª - 1	0'43.233	0'43.233	184.616	0'42.679	0'42.679	186.852	0'43.578	0'43.578	185.887	0'43.302	0'43.302	206.107	0'43.515	0'43.515	188.482	0'43.727	0'43.727	172.249
7ª - 2	1'30.771	0'47.538		1'32.381	0'49.702		1'32.342	0'48.764		1'31.181	0'47.879		1'32.364	0'48.849		1'31.498	0'47.771	
7ª - 3	2'18.253	0'47.482		2'18.828	0'46.447		2'20.638	0'48.296		2'19.426	0'48.245		2'20.930	0'48.566		2'20.152	0'48.654	
8ª - 1	0'43.766	0'43.766	180.001	0'42.480	0'42.480	197.803	0'44.257	0'44.257	175.610	0'43.719	0'43.719	205.715	0'43.780	0'43.780	183.674	0'43.443	0'43.443	183.051
8ª - 2	1'31.365	0'47.599		1'28.750	0'46.270		1'33.087	0'48.830		1'31.627	0'47.908		1'32.105	0'48.325		1'31.401	0'47.958	
8ª - 3	2'18.997	0'47.632		2'15.109	0'46.359		2'21.080	0'47.993		2'20.581	0'48.954		2'20.154	0'48.049		2'19.544	0'48.143	
9ª - 1	0'43.951	0'43.951	190.477	0'43.324	0'43.324	190.813	0'43.456	0'43.456	178.808	0'43.959	0'43.959	197.803	0'43.412	0'43.412	182.125	0'43.276	0'43.276	199.631
9ª - 2	1'31.134	0'47.183		1'31.336	0'48.012		1'32.742	0'49.286		1'32.862	0'48.903		1'31.653	0'48.241		1'32.150	0'48.874	
9ª - 3	2'18.972	0'47.838		2'17.821	0'46.485		2'38.926	1'06.184		2'21.396	0'48.534		2'20.632	0'48.979		2'20.315	0'48.165	
10ª - 1	0'42.993	0'42.993	185.568	0'42.822	0'42.822	194.946	0'43.775	0'43.775	174.758	0'43.269	0'43.269	216.001	0'43.550	0'43.550	184.301	0'43.475	0'43.475	186.852
10ª - 2	1'31.144	0'48.151		1'32.286	0'49.464		1'33.719	0'49.944		1'32.245	0'48.976		1'31.486	0'47.936		1'31.082	0'47.607	
10ª - 3	2'21.556	0'50.412		2'28.630	0'56.344	PIT	2'22.121	0'48.402		2'20.636	0'48.391		2'19.960	0'48.474		2'20.547	0'49.465	
11ª - 1	0'43.052	0'43.052	186.529	1'27.187	1'27.187	121.485	0'49.621	0'49.621	143.809	0'42.975	0'42.975	220.859	0'55.068	0'55.068	130.751	0'43.829	0'43.829	170.079
11ª - 2	1'30.072	0'47.020		2'13.808	0'46.621		1'41.433	0'51.812		1'30.257	0'47.282		1'58.688	1'03.620		1'41.134	0'57.305	
11ª - 3	2'17.405	0'47.333		3'11.256	0'57.448	PIT	2'56.427	1'14.994	PIT	2'33.368	1'03.111	PIT	3'15.553	1'16.865	PIT	2'29.305	0'48.171	
12ª - 1	0'44.263	0'44.263	213.439													0'44.628	0'44.628	187.501
12ª - 2	1'42.344	0'58.081														1'34.302	0'49.674	
12ª - 3	2'52.954	1'10.610	PIT													2'22.699	0'48.397	
13ª - 1																0'44.047	0'44.047	166.925
13ª - 2																1'33.688	0'49.641	
13ª - 3																2'48.945	1'15.257	PIT

Ideal Lap	
0'42.953	0'42.953
1'29.826	0'46.873
2'17.159	0'47.333

Ideal Lap	
0'42.480	0'42.480
128.750	0'46.270
2'15.109	0'46.359

Ideal Lap	
0'43.456	0'43.456
1'31.548	0'48.092
2'19.541	0'47.993

Ideal Lap	
0'42.975	0'42.975
1'30.257	0'47.282
2'18.502	0'48.245

Ideal Lap	
0'43.412	0'43.412
1'31.348	0'47.936
2'19.397	0'48.049

Ideal Lap	
0'42.101	0'42.101
1'29.708	0'47.607
2'17.851	0'48.143

Ideal Best Lap	
0'42.086	0'42.086
1'26.903	0'44.817
2'13.141	0'46.238



On October 03 - 04  
Autodromo di Monza

## LAP ANALYSIS Free practice 2

Number	19			20			21			22			23			24		
	Lap Time	Partial	Speed	Lap Time	Partial	Speed	Lap Time	Partial	Speed	Lap Time	Partial	Speed	Lap Time	Partial	Speed	Lap Time	Partial	Speed
1ª - 1	0'52.056	0'52.056	137.932	0'45.053	0'45.053	163.143	0'46.816	0'46.816	150.628	0'45.062	0'45.062	175.325	0'47.018	0'47.018	184.301	0'44.227	0'44.227	187.827
1ª - 2	1'42.980	0'50.924		1'33.375	0'48.322		1'37.154	0'50.338		1'34.128	0'49.066		1'41.057	0'54.039		1'32.709	0'48.482	
1ª - 3	2'35.295	0'52.315		2'22.463	0'49.088		2'27.598	0'50.444		2'23.707	0'49.579		2'30.586	0'49.529		2'21.712	0'49.003	
2ª - 1	0'44.920	0'44.920	162.407	0'43.952	0'43.952	179.402	0'48.778	0'48.778	178.808	0'44.786	0'44.786	196.008	0'45.098	0'45.098	183.362	0'43.312	0'43.312	193.549
2ª - 2	1'34.254	0'49.334		1'31.827	0'47.875		1'55.455	1'06.677		1'33.891	0'49.105		1'34.078	0'48.980		1'32.366	0'49.054	
2ª - 3	2'23.952	0'49.698		2'19.801	0'47.974		2'44.945	0'49.490		2'22.907	0'49.016		2'23.727	0'49.649		2'21.349	0'48.983	
3ª - 1	0'43.968	0'43.968	185.568	0'43.130	0'43.130	192.858	0'43.964	0'43.964	200.744	0'44.546	0'44.546	168.750	0'45.471	0'45.471	161.677	0'42.956	0'42.956	195.653
3ª - 2	1'32.734	0'48.766		1'36.910	0'53.780		1'33.344	0'49.380		1'33.596	0'49.050		1'34.817	0'49.346		1'31.202	0'48.246	
3ª - 3	2'21.808	0'49.074		2'25.705	0'48.795		2'22.209	0'48.865		2'23.098	0'49.502		2'23.944	0'49.127		2'19.678	0'48.476	
4ª - 1	0'43.330	0'43.330	194.245	0'43.629	0'43.629	192.858	0'46.558	0'46.558	168.487	0'43.659	0'43.659	181.209	0'44.289	0'44.289	176.183	0'43.725	0'43.725	179.701
4ª - 2	1'31.933	0'48.603		1'32.674	0'49.045		1'34.600	0'48.042		1'31.789	0'48.130		1'33.279	0'48.990		1'33.324	0'49.599	
4ª - 3	2'20.812	0'48.879		2'28.447	0'55.773	PIT	2'23.444	0'48.844		2'20.146	0'48.357		2'22.348	0'49.069		2'22.482	0'49.158	
5ª - 1	0'43.276	0'43.276	198.166	2'34.182	2'34.182	171.975	0'43.467	0'43.467	185.887	0'44.088	0'44.088	178.808	0'44.464	0'44.464	183.987	0'43.092	0'43.092	184.616
5ª - 2	1'31.806	0'48.530		3'23.033	0'48.851		1'31.936	0'48.469		1'32.311	0'48.223		1'32.801	0'48.337		1'32.309	0'49.217	
5ª - 3	2'20.465	0'48.659		4'10.742	0'47.709		2'20.800	0'48.864		2'20.994	0'48.683		2'21.436	0'48.635		2'20.438	0'48.129	
6ª - 1	0'43.263	0'43.263	191.490	0'43.047	0'43.047	197.081	0'43.862	0'43.862	177.925	0'43.600	0'43.600	186.852	0'44.289	0'44.289	176.183	0'43.395	0'43.395	188.482
6ª - 2	1'31.601	0'48.338		1'31.759	0'48.712		1'32.240	0'48.378		1'31.662	0'48.062		1'50.179	0'48.523		1'31.398	0'48.003	
6ª - 3	2'20.352	0'48.751		2'19.272	0'47.513		2'20.605	0'48.365		2'20.213	0'48.551		2'38.870	0'48.691		2'19.573	0'48.175	
7ª - 1	0'44.205	0'44.205	180.000	0'42.843	0'42.843	189.474	0'43.487	0'43.487	192.171	0'43.621	0'43.621	180.905	0'44.299	0'44.299	187.176	0'43.061	0'43.061	193.549
7ª - 2	1'33.359	0'49.154		1'30.974	0'48.131		1'31.740	0'48.253		1'31.313	0'47.692		1'33.046	0'48.747		1'30.633	0'47.572	
7ª - 3	2'21.805	0'48.446		2'19.447	0'48.473		2'24.578	0'52.838	PIT	2'19.183	0'47.870		2'21.823	0'48.777		2'18.393	0'47.760	
8ª - 1	0'43.901	0'43.901	178.808	0'43.209	0'43.209	190.477	2'07.980	2'07.980	176.471	0'43.438	0'43.438	179.701	0'45.073	0'45.073	182.433	0'54.388	0'54.388	189.474
8ª - 2	1'32.494	0'48.593		1'30.947	0'47.738		2'56.248	0'48.268		1'31.118	0'47.680		1'33.783	0'48.710		1'43.505	0'49.117	
8ª - 3	2'28.615	0'56.121	PIT	2'25.923	0'54.976	PIT	3'45.059	0'48.811		2'18.667	0'47.549		2'21.730	0'47.947		2'38.682	0'55.177	PIT
9ª - 1	3'52.622	3'52.622	104.550	4'09.547	4'09.547	120.268	0'43.461	0'43.461	183.987	0'43.487	0'43.487	188.812	0'44.021	0'44.021	188.812	4'10.404	4'10.404	158.824
9ª - 2	4'42.063	0'49.441		5'01.025	0'51.478		1'31.576	0'48.115		1'30.877	0'47.390		1'33.300	0'49.279		4'59.600	0'49.196	
9ª - 3	5'32.113	0'50.050		5'49.938	0'48.913		2'21.003	0'49.427		2'18.672	0'47.795		2'21.736	0'48.436		5'50.298	0'50.698	
10ª - 1	0'43.359	0'43.359	191.830	0'43.505	0'43.505	203.008	0'43.617	0'43.617	178.218	0'43.257	0'43.257	195.299	0'44.706	0'44.706	175.325	0'43.799	0'43.799	185.887
10ª - 2	1'31.701	0'48.342		3'08.076	2'24.571		1'31.973	0'48.356		1'30.667	0'47.410		1'32.425	0'47.719		1'31.619	0'47.820	
10ª - 3	2'19.957	0'48.256		4'30.744	1'22.668	PIT	2'20.502	0'48.529		2'18.855	0'48.188		2'21.011	0'48.586		2'20.390	0'48.771	
11ª - 1	0'45.410	0'45.410	171.975				0'43.397	0'43.397	171.157	0'44.541	0'44.541	200.744	0'44.162	0'44.162	186.852	0'43.131	0'43.131	190.813
11ª - 2	1'33.833	0'48.423					1'31.429	0'48.032		1'33.263	0'48.722		1'32.806	0'48.644		1'35.290	0'52.159	
11ª - 3	2'41.234	1'07.401	PIT				2'21.184	0'49.755		2'21.589	0'48.326		2'21.173	0'48.367		2'34.100	0'58.810	PIT
12ª - 1							0'46.496	0'46.496	164.886	0'43.074	0'43.074	191.490	0'44.360	0'44.360	183.051			
12ª - 2							1'37.166	0'50.670		1'31.965	0'48.891		1'34.207	0'49.847				
12ª - 3							2'47.121	1'09.955	PIT	2'19.734	0'47.769		2'30.236	0'56.029	PIT			
13ª - 1										0'42.600	0'42.600	190.477						
13ª - 2										1'32.923	0'50.323							
13ª - 3										2'47.101	1'14.178	PIT						

Ideal Lap	
0'43.263	0'43.263
1'31.601	0'48.338
2'19.857	0'48.256

Ideal Lap	
0'42.843	0'42.843
1'30.581	0'47.738
2'18.094	0'47.513

Ideal Lap	
0'43.397	0'43.397
1'31.429	0'48.032
2'19.794	0'48.365

Ideal Lap	
0'42.600	0'42.600
1'29.990	0'47.390
2'17.539	0'47.549

Ideal Lap	
0'44.021	0'44.021
1'31.740	0'47.719
2'19.687	0'47.947

Ideal Lap	
0'42.956	0'42.956
1'30.528	0'47.572
2'18.288	0'47.760

Ideal Best Lap	
0'42.086	0'42.086
1'26.903	0'44.817
2'13.141	0'46.238



## LAP ANALYSIS Free practice 2

Number	28			33			34			61			67			73		
	Lap Time	Partial	Speed	Lap Time	Partial	Speed	Lap Time	Partial	Speed	Lap Time	Partial	Speed	Lap Time	Partial	Speed	Lap Time	Partial	Speed
<b>1<sup>a</sup> - 1</b>	0'44.284	0'44.284	177.632	0'43.136	0'43.136	194.245	0'43.818	0'43.818	183.051	0'48.592	0'48.592	148.352	0'46.268	0'46.268	176.760	0'47.199	0'47.199	172.524
<b>1<sup>a</sup> - 2</b>	1'33.090	0'48.806		1'31.629	0'48.493		1'30.919	0'47.101		1'36.520	0'47.928		1'36.729	0'50.461		1'37.019	0'49.820	
<b>1<sup>a</sup> - 3</b>	2'21.975	0'48.885		2'20.646	0'49.017		2'29.219	0'58.300	PIT	2'25.514	0'48.994		2'25.859	0'49.130		2'26.964	0'49.945	
<b>2<sup>a</sup> - 1</b>	0'42.917	0'42.917	210.527	0'43.556	0'43.556	181.819	3'39.756	3'39.756	160.238	0'45.140	0'45.140	152.759	0'45.328	0'45.328	208.093	0'45.239	0'45.239	184.932
<b>2<sup>a</sup> - 2</b>	1'31.148	0'48.231		1'32.557	0'49.001		4'27.787	0'48.031		1'33.850	0'48.710		1'34.324	0'48.996		1'36.435	0'51.196	
<b>2<sup>a</sup> - 3</b>	2'19.193	0'48.045		2'20.999	0'48.442		5'15.576	0'47.789		2'22.254	0'48.404		2'24.535	0'50.211		2'26.236	0'49.801	
<b>3<sup>a</sup> - 1</b>	0'43.824	0'43.824	189.142	0'43.844	0'43.844	177.632	0'43.667	0'43.667	181.209	0'44.082	0'44.082	167.702	0'44.488	0'44.488	185.568	0'44.564	0'44.564	174.194
<b>3<sup>a</sup> - 2</b>	1'32.093	0'48.269		1'31.582	0'47.738		1'30.335	0'46.668		1'31.913	0'47.831		1'33.124	0'48.636		1'33.121	0'48.557	
<b>3<sup>a</sup> - 3</b>	2'20.767	0'48.674		2'20.120	0'48.538		2'17.509	0'47.174		2'19.846	0'47.933		2'22.677	0'49.553		2'21.834	0'48.713	
<b>4<sup>a</sup> - 1</b>	0'43.307	0'43.307	197.803	0'44.100	0'44.100	200.744	0'43.258	0'43.258	193.203	0'44.397	0'44.397	167.183	0'44.352	0'44.352	200.372	0'44.681	0'44.681	177.340
<b>4<sup>a</sup> - 2</b>	1'31.303	0'47.996		1'34.165	0'50.065		1'29.202	0'45.944		1'31.661	0'47.264		1'38.111	0'53.759		1'37.200	0'52.519	
<b>4<sup>a</sup> - 3</b>	2'19.217	0'47.914		2'30.037	0'55.872	PIT	2'15.980	0'46.778		2'20.007	0'48.346		2'27.948	0'49.837		2'26.787	0'49.587	
<b>5<sup>a</sup> - 1</b>	0'43.992	0'43.992	183.362	3'51.809	3'51.809	132.516	0'43.473	0'43.473	188.812	0'43.604	0'43.604	169.015	1'01.666	1'01.666	183.674	0'43.885	0'43.885	186.207
<b>5<sup>a</sup> - 2</b>	1'31.692	0'47.700		4'39.771	0'47.962		1'29.720	0'46.247		1'30.851	0'47.247		1'19.879	1'18.213		1'32.821	0'48.936	
<b>5<sup>a</sup> - 3</b>	2'29.098	0'57.406	PIT	5'28.544	0'48.773		2'16.926	0'47.206		2'18.475	0'47.624		2'09.405	0'49.526		2'20.971	0'48.150	
<b>6<sup>a</sup> - 1</b>	4'16.133	4'16.133	173.914	0'43.581	0'43.581	179.701	0'43.157	0'43.157	197.803	0'44.840	0'44.840	162.163	0'43.912	0'43.912	197.081	0'43.781	0'43.781	183.674
<b>6<sup>a</sup> - 2</b>	5'04.484	0'48.351		1'31.941	0'48.360		1'29.094	0'45.937		1'33.508	0'48.668		1'32.368	0'48.456		1'33.171	0'49.390	
<b>6<sup>a</sup> - 3</b>	5'53.071	0'48.587		2'20.113	0'48.172		2'16.550	0'47.456		2'31.673	0'58.165	PIT	2'21.312	0'48.944		2'21.856	0'48.685	
<b>7<sup>a</sup> - 1</b>	0'43.240	0'43.240	198.166	0'43.594	0'43.594	198.896	0'44.012	0'44.012	183.362	5'49.022	5'49.022	156.522	0'46.865	0'46.865	185.887	0'43.862	0'43.862	191.151
<b>7<sup>a</sup> - 2</b>	1'31.249	0'48.009		1'30.995	0'47.401		1'28.829	0'44.817		6'37.188	0'48.166		1'35.423	0'48.558		1'32.305	0'48.443	
<b>7<sup>a</sup> - 3</b>	2'19.787	0'48.538		2'19.326	0'48.331		2'15.441	0'46.612		7'25.999	0'48.811		2'24.389	0'48.966		2'20.692	0'48.387	
<b>8<sup>a</sup> - 1</b>	0'43.533	0'43.533	193.203	0'43.512	0'43.512	197.803	0'42.780	0'42.780	210.938	0'43.445	0'43.445	182.125	0'44.882	0'44.882	184.616	0'44.234	0'44.234	183.987
<b>8<sup>a</sup> - 2</b>	1'31.201	0'47.668		1'32.065	0'48.553		1'28.924	0'46.144		1'30.928	0'47.483		1'33.230	0'48.348		1'32.064	0'47.830	
<b>8<sup>a</sup> - 3</b>	2'18.899	0'47.698		2'20.527	0'48.462		2'15.643	0'46.719		2'19.360	0'48.432		2'22.391	0'49.161		2'20.272	0'48.208	
<b>9<sup>a</sup> - 1</b>	0'42.582	0'42.582	200.372	0'43.251	0'43.251	191.151	0'42.731	0'42.731	207.693	0'43.715	0'43.715	192.171	0'44.289	0'44.289	200.372	0'44.015	0'44.015	177.632
<b>9<sup>a</sup> - 2</b>	1'30.406	0'47.824		1'30.696	0'47.445		1'28.764	0'46.033		1'31.231	0'47.516		1'33.421	0'49.132		1'31.752	0'47.737	
<b>9<sup>a</sup> - 3</b>	2'18.307	0'47.901		2'18.483	0'47.787		2'15.195	0'46.431		2'19.421	0'48.190		2'23.822	0'50.401		2'19.731	0'47.979	
<b>10<sup>a</sup> - 1</b>	0'42.667	0'42.667	200.744	0'43.617	0'43.617	196.722	0'42.432	0'42.432	218.182	0'43.638	0'43.638	188.812	0'43.817	0'43.817	203.390	0'44.049	0'44.049	192.171
<b>10<sup>a</sup> - 2</b>	1'30.891	0'48.224		1'30.937	0'47.320		1'30.931	0'48.499		1'32.099	0'48.461		1'32.599	0'48.782		1'31.743	0'47.694	
<b>10<sup>a</sup> - 3</b>	2'18.647	0'47.756		2'19.267	0'48.330		2'18.131	0'47.200		2'19.804	0'47.705		2'22.384	0'49.785		2'32.132	1'00.389	
<b>11<sup>a</sup> - 1</b>	0'44.930	0'44.930	213.439	0'43.080	0'43.080	193.896	0'43.102	0'43.102	197.081	0'45.282	0'45.282	189.474	0'44.453	0'44.453	182.433	0'43.564	0'43.564	187.175
<b>11<sup>a</sup> - 2</b>	1'34.660	0'49.730		1'31.199	0'48.119		1'29.310	0'46.208		1'35.398	0'50.116		1'32.711	0'48.258		1'30.933	0'47.369	
<b>11<sup>a</sup> - 3</b>	2'37.430	1'02.770	PIT	2'18.853	0'47.654		2'15.548	0'46.238		2'36.477	1'01.079	PIT	2'21.071	0'48.360		2'18.577	0'47.644	
<b>12<sup>a</sup> - 1</b>				0'43.263	0'43.263	193.896	0'44.944	0'44.944	163.885				0'44.017	0'44.017	201.493	0'43.467	0'43.467	187.501
<b>12<sup>a</sup> - 2</b>				1'33.169	0'49.906		1'32.708	0'47.764					1'32.562	0'48.545		1'31.888	0'48.421	
<b>12<sup>a</sup> - 3</b>				2'31.656	0'58.487	PIT	2'41.082	1'08.374	PIT				2'21.323	0'48.761		2'20.194	0'48.306	
<b>13<sup>a</sup> - 1</b>													0'49.768	0'49.768	146.144	0'43.328	0'43.328	196.008
<b>13<sup>a</sup> - 2</b>													1'40.637	0'50.869		1'31.637	0'48.309	
<b>13<sup>a</sup> - 3</b>													2'48.637	1'08.000	PIT	2'38.742	1'07.105	PIT

Ideal Lap	
0'42.582	0'42.582
1'30.250	0'47.668
2'17.948	0'47.698

Ideal Lap	
0'43.080	0'43.080
1'30.400	0'47.320
2'18.054	0'47.654

Ideal Lap	
0'42.432	0'42.432
1'27.249	0'44.817
2'13.487	0'46.238

Ideal Lap	
0'43.445	0'43.445
1'30.692	0'47.247
2'18.316	0'47.624

Ideal Lap	
0'43.817	0'43.817
1'32.075	0'48.258
2'20.435	0'48.360

Ideal Lap	
0'43.328	0'43.328
1'30.697	0'47.369
2'18.341	0'47.644

Ideal Best Lap	
0'42.086	0'42.086
1'26.903	0'44.817
2'13.141	0'46.238



On October 03 - 04  
Autodromo di Monza

LAP ANALYSIS Free practice 2

Number	77			87			88		
	Lap Time	Partial	Speed	Lap Time	Partial	Speed	Lap Time	Partial	Speed
1 <sup>a</sup> - 1	0'46.747	0'46.747	163.885	0'52.623	0'52.623	142.293	0'48.034	0'48.034	146.740
1 <sup>a</sup> - 2	1'38.206	0'51.459		1'43.648	0'51.025		1'36.909	0'48.875	
1 <sup>a</sup> - 3	2'29.562	0'51.356		2'35.165	0'51.517		2'26.710	0'49.801	
2 <sup>a</sup> - 1	0'44.772	0'44.772	171.429	0'45.349	0'45.349	177.632	1'11.129	1'11.129	163.143
2 <sup>a</sup> - 2	1'35.599	0'50.827		1'34.827	0'49.478		2'00.961	0'49.832	
2 <sup>a</sup> - 3	2'26.875	0'51.276		2'25.333	0'50.506		2'54.299	0'53.338	
3 <sup>a</sup> - 1	0'44.877	0'44.877	175.041	0'46.068	0'46.068	174.475	0'45.621	0'45.621	165.391
3 <sup>a</sup> - 2	1'34.076	0'49.199		1'47.079	1'01.011		1'34.857	0'49.236	
3 <sup>a</sup> - 3	2'24.050	0'49.974		2'37.564	0'50.485		2'24.877	0'50.020	
4 <sup>a</sup> - 1	0'43.983	0'43.983	177.925	0'44.393	0'44.393	172.524	0'44.660	0'44.660	181.209
4 <sup>a</sup> - 2	1'33.120	0'49.137		1'32.991	0'48.598		1'34.371	0'49.711	
4 <sup>a</sup> - 3	2'23.073	0'49.953		2'22.190	0'49.199		2'23.862	0'49.491	
5 <sup>a</sup> - 1	0'43.756	0'43.756	182.433	0'43.846	0'43.846	191.151	0'43.978	0'43.978	183.987
5 <sup>a</sup> - 2	1'32.363	0'48.607		1'31.851	0'48.005		1'32.236	0'48.258	
5 <sup>a</sup> - 3	2'21.478	0'49.115		2'20.951	0'49.100		2'20.676	0'48.440	
6 <sup>a</sup> - 1	0'43.202	0'43.202	203.390	0'45.061	0'45.061	159.528	0'44.438	0'44.438	167.183
6 <sup>a</sup> - 2	1'31.515	0'48.313		1'38.674	0'53.613		1'32.160	0'47.722	
6 <sup>a</sup> - 3	2'20.652	0'49.137		2'28.350	0'49.676		2'29.310	0'57.150	PIT
7 <sup>a</sup> - 1	0'42.899	0'42.899	190.477	0'43.372	0'43.372	188.154	2'45.868	2'45.868	137.580
7 <sup>a</sup> - 2	1'32.062	0'49.163		1'31.137	0'47.765		3'36.022	0'50.154	
7 <sup>a</sup> - 3	2'20.653	0'48.591		2'20.088	0'48.951		4'25.220	0'49.198	
8 <sup>a</sup> - 1	0'44.087	0'44.087	193.549	0'43.289	0'43.289	200.001	1'18.135	1'18.135	178.513
8 <sup>a</sup> - 2	1'31.861	0'47.774		1'31.086	0'47.797		2'06.644	0'48.500	
8 <sup>a</sup> - 3	2'20.767	0'48.906		2'20.446	0'49.360		3'13.300	1'06.656	
9 <sup>a</sup> - 1	0'42.915	0'42.915	194.245	0'43.666	0'43.666	206.107	0'45.000	0'45.000	157.895
9 <sup>a</sup> - 2	1'31.413	0'48.498		1'54.092	1'10.426		1'36.669	0'51.669	
9 <sup>a</sup> - 3	2'19.637	0'48.224		2'49.733	0'55.641		2'25.474	0'48.805	
10 <sup>a</sup> - 1	0'44.145	0'44.145	206.107	0'43.944	0'43.944	175.896	0'44.656	0'44.656	162.896
10 <sup>a</sup> - 2	5'09.791	4'25.646		1'32.894	0'48.950		1'33.660	0'49.004	
10 <sup>a</sup> - 3	6'17.158	1'07.367	PIT	2'23.060	0'50.166		2'23.716	0'50.056	
11 <sup>a</sup> - 1				0'43.554	0'43.554	183.987	0'46.312	0'46.312	151.049
11 <sup>a</sup> - 2				1'31.413	0'47.859		1'37.182	0'50.870	
11 <sup>a</sup> - 3				2'20.211	0'48.798		3'25.713	1'48.531	PIT
12 <sup>a</sup> - 1				0'46.798	0'46.798	176.471			
12 <sup>a</sup> - 2				1'36.302	0'49.504				
12 <sup>a</sup> - 3				2'44.148	1'07.846				
13 <sup>a</sup> - 1									
13 <sup>a</sup> - 2									
13 <sup>a</sup> - 3									

Ideal Lap	
0'42.899	0'42.899
1'30.673	0'47.774
2'18.897	0'48.224

Ideal Lap	
0'43.289	0'43.289
1'31.054	0'47.765
2'19.852	0'48.798

Ideal Lap	
0'43.978	0'43.978
1'31.700	0'47.722
2'20.140	0'48.440

Ideal Best Lap	
0'42.086	0'42.086
1'26.903	0'44.817
2'13.141	0'46.238



## Free practice 2 Sectors Results

Sector - 1		Sector - 2		Sector - 3		Ideal Lap vs Best Lap					
Ord.	Nº Driver	Time	Nº Driver	Time	Nº Driver	Time	Ord.	Nº Driver	Ideal Lap	Best Lap	Ord.
1	2 Manuel Giau	42.086	34 Stian Paulsen	44.817	34 Stian Paulsen	46.238	1	34 Stian Paulsen	2'13.487	2'15.195	2
2	17 Mladen Lalusic	42.101	5 Thibaut Mourgues	45.926	3 Julien Briché	46.276	2	3 Julien Briché	2'14.939	2'15.623	3
3	3 Julien Briché	42.204	9 Lucile Cypriano	46.270	9 Lucile Cypriano	46.359	3	9 Lucile Cypriano	2'15.109	2'15.109	1
4	34 Stian Paulsen	42.432	3 Julien Briché	46.459	5 Thibaut Mourgues	46.753	4	5 Thibaut Mourgues	2'15.331	2'16.367	5
5	9 Lucile Cypriano	42.480	2 Manuel Giau	46.787	6 Mikel Azcona	47.036	5	2 Manuel Giau	2'15.932	2'16.234	4
6	28 Fran Rueda	42.582	8 Shane Anthony Williams	46.873	2 Manuel Giau	47.059	6	8 Shane Anthony Williams	2'17.159	2'17.405	7
7	22 Alexander Morgan	42.600	4 David Cebrian	46.895	1 Pol Rosell	47.303	7	1 Pol Rosell	2'17.296	2'17.643	8
8	5 Thibaut Mourgues	42.652	6 Mikel Azcona	46.980	8 Shane Anthony Williams	47.333	8	6 Mikel Azcona	2'17.375	2'17.375	6
9	20 Lourenço Beirão Da Veiga	42.843	1 Pol Rosell	47.119	20 Lourenço Beirão Da Veiga	47.513	9	22 Alexander Morgan	2'17.539	2'18.667	15
10	1 Pol Rosell	42.874	61 Mario Dablander	47.247	22 Alexander Morgan	47.549	10	17 Mladen Lalusic	2'17.851	2'19.402	17
11	77 Jean-Laurent Navarro	42.899	11 Jürgen Schmarl	47.282	61 Mario Dablander	47.624	11	28 Fran Rueda	2'17.948	2'18.307	10
12	8 Shane Anthony Williams	42.953	33 Jordi Oriola	47.320	73 Mateu Clement	47.644	12	33 Jordi Oriola	2'18.054	2'18.483	13
13	24 Andrina Gugger	42.956	73 Mateu Clement	47.369	33 Jordi Oriola	47.654	13	20 Lourenço Beirão Da Veiga	2'18.094	2'19.272	16
14	11 Jürgen Schmarl	42.975	22 Alexander Morgan	47.390	28 Fran Rueda	47.698	14	4 David Cebrian	2'18.148	2'18.219	9
15	33 Jordi Oriola	43.080	24 Andrina Gugger	47.572	24 Andrina Gugger	47.760	15	24 Andrina Gugger	2'18.288	2'18.393	11
16	4 David Cebrian	43.263	17 Mladen Lalusic	47.607	23 Stefano Zanini	47.947	16	61 Mario Dablander	2'18.316	2'18.475	12
17	19 Attila Tassi	43.263	28 Fran Rueda	47.668	4 David Cebrian	47.990	17	73 Mateu Clement	2'18.341	2'18.577	14
18	87 Edina Bús	43.289	23 Stefano Zanini	47.719	10 Mauricio Hernandez	47.993	18	11 Jürgen Schmarl	2'18.502	2'19.426	18
19	73 Mateu Clement	43.328	88 Finlay Crocker	47.722	12 Dejan Bulatovic	48.049	19	77 Jean-Laurent Navarro	2'18.897	2'19.637	19
20	6 Mikel Azcona	43.359	20 Lourenço Beirão Da Veiga	47.738	17 Mladen Lalusic	48.143	20	12 Dejan Bulatovic	2'19.397	2'19.960	21
21	21 Marie Baus - Coppens	43.397	87 Edina Bús	47.765	77 Jean-Laurent Navarro	48.224	21	10 Mauricio Hernandez	2'19.541	2'20.638	24
22	12 Dejan Bulatovic	43.412	77 Jean-Laurent Navarro	47.774	11 Jürgen Schmarl	48.245	22	23 Stefano Zanini	2'19.687	2'21.011	26
23	61 Mario Dablander	43.445	12 Dejan Bulatovic	47.936	19 Attila Tassi	48.256	23	21 Marie Baus - Coppens	2'19.794	2'20.502	23
24	10 Mauricio Hernandez	43.456	21 Marie Baus - Coppens	48.032	67 Marco Pellegrini	48.360	24	87 Edina Bús	2'19.852	2'20.088	22
25	67 Marco Pellegrini	43.817	10 Mauricio Hernandez	48.092	21 Marie Baus - Coppens	48.365	25	19 Attila Tassi	2'19.857	2'19.957	20
26	88 Finlay Crocker	43.978	67 Marco Pellegrini	48.258	88 Finlay Crocker	48.440	26	88 Finlay Crocker	2'20.140	2'20.676	25
27	23 Stefano Zanini	44.021	19 Attila Tassi	48.338	87 Edina Bús	48.798	27	67 Marco Pellegrini	2'20.435	2'21.071	27

Autodromo di Monza

On October 03 - 04

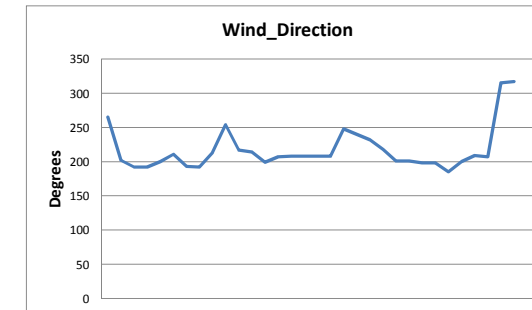
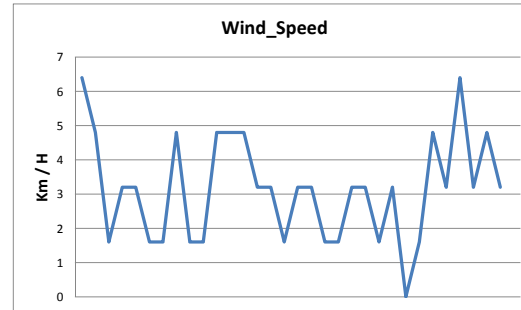
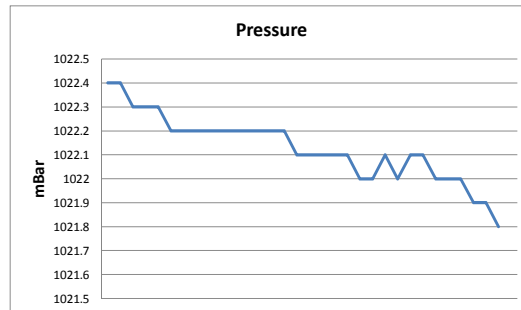
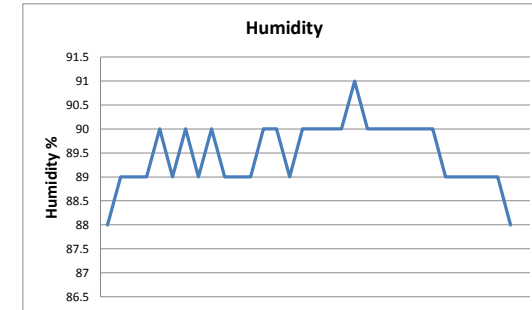
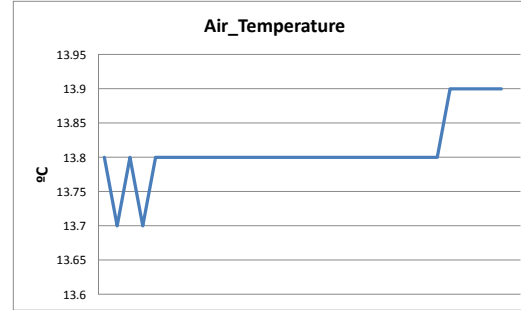
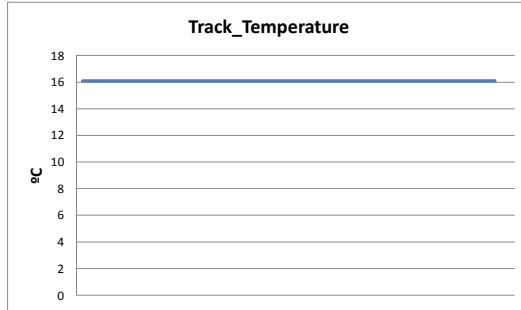
**Free practice 2 MAXIMUM SPEED**

Ord.	Nº	Entrant	Nat.	Driver	Nat.	Vehicle	Km/h
1	11	TARGET, SRL	AUT	Jürgen Schmarl	AUT	SEAT Leon Cup Racer MK3	220.859
2	34	STIAN PAULSEN RACING	NOR	Stian Paulsen	NOR	SEAT Leon Cup Racer MK3	218.182
3	3	JULIEN BRICHÉ	FRA	Julien Briché	FRA	SEAT Leon Cup Racer MK3	216.868
4	8	WOLF-POWER RACING	RSA	Shane Anthony Williams	RSA	SEAT Leon Cup Racer MK3	213.439
5	28	MONLAU COMPETICIÓN	ESP	Fran Rueda	ESP	SEAT Leon Cup Racer MK3	213.439
6	5	THIBAUT MOURGUES	FRA	Thibaut Mourgues	FRA	SEAT Leon Cup Racer MK3	210.527
7	6	PCR SPORT	ESP	Mikel Azcona	ESP	SEAT Leon Cup Racer MK3	210.117
8	2	BAPORO MOTORSPORT	PRT	Manuel Giao	PRT	SEAT Leon Cup Racer MK3	209.709
9	67	MARCO PELLEGRINI	ITA	Marco Pellegrini	ITA	SEAT Leon Cup Racer MK3	208.093
10	17	LEIN RACING	SRB	Mladen Lalusic	SRB	SEAT Leon Cup Racer MK3	206.107
11	77	JEAN-LAURENT NAVARRO	FRA	Jean-Laurent Navarro	FRA	SEAT Leon Cup Racer MK3	206.107
12	87	B3 HUNGARY KFT	HUN	Edina Bús	HUN	SEAT Leon Cup Racer MK3	206.107
13	1	BAPORO MOTORSPORT	ESP	Pol Rosell	ESP	SEAT Leon Cup Racer MK3	204.934
14	20	LOURENÇO BEIRÃO	PRT	Lourenço Beirão Da Veiga	PRT	SEAT Leon Cup Racer MK3	203.008
15	21	MARIE BAUS-COPPENS	FRA	Marie Baus - Coppens	FRA	SEAT Leon Cup Racer MK3	200.744
16	22	BAPORO MOTORSPORT	GBR	Alexander Morgan	GBR	SEAT Leon Cup Racer MK3	200.744
17	33	TARGET, SRL	ESP	Jordi Oriola	ESP	SEAT Leon Cup Racer MK3	200.744
18	19	B3 HUNGARY KFT	HUN	Attila Tassi	HUN	SEAT Leon Cup Racer MK3	198.166
19	9	LUCILE CYPRIANO	FRA	Lucile Cypriano	FRA	SEAT Leon Cup Racer MK3	197.803
20	4	MONLAU COMPETICIÓN	ESP	David Cebrian	ESP	SEAT Leon Cup Racer MK3	196.722
21	73	MATEU CLEMENT	FRA	Mateu Clement	FRA	SEAT Leon Cup Racer MK3	196.008
22	24	TARGET, SRL	CHE	Andrina Gugger	CHE	SEAT Leon Cup Racer MK3	195.653
23	12	LEIN RACING	MNE	Dejan Bulatovic	MNE	SEAT Leon Cup Racer MK3	194.946
24	61	SEAT AUSTRIA	AUT	Mario Dablander	AUT	SEAT Leon Cup Racer MK3	192.171
25	23	STEFANO ZANINI	MCO	Stefano Zanini	MCO	SEAT Leon Cup Racer MK3	188.812
26	10	TARGET, SRL	CRI	Mauricio Hernandez	CRI	SEAT Leon Cup Racer MK3	185.887
27	88	FINLAY CROCKER	GBR	Finlay Crocker	GBR	SEAT Leon Cup Racer MK3	183.987



**WEATHER REPORT Free practice 2**

Track Status



Autodromo di Monza

On October 03 - 04

## FREE PRACTICES RESULTS

Ord.	Nº	Entrant	Nat.	Driver	Nat.	Vehicle	Laps	Laps1	BL1	Time-1	Laps2	BL2	Time-2	Best	Km/h
1	2	BAPORO MOTORSPORT	PRT	Manuel Giao	PRT	SEAT Leon Cup Racer MK3	23	12	7	2'00.716	11	8	2'16.234	<b>2'00.716</b>	172.759
2	3	JULIEN BRICHÉ	FRA	Julien Briché	FRA	SEAT Leon Cup Racer MK3	27	14	11	2'00.735	13	7	2'15.631	<b>2'00.735</b>	172.732
3	1	BAPORO MOTORSPORT	ESP	Pol Rosell	ESP	SEAT Leon Cup Racer MK3	24	12	11	2'00.957	12	11	2'17.643	<b>2'00.957</b>	172.415
4	11	TARGET, SRL	AUT	Jürgen Schmarl	AUT	SEAT Leon Cup Racer MK3	23	11	10	2'01.051	12	8	2'19.426	<b>2'01.051</b>	172.281
5	33	TARGET, SRL	ESP	Jordi Oriola	ESP	SEAT Leon Cup Racer MK3	25	12	9	2'01.133	13	10	2'18.483	<b>2'01.133</b>	172.164
6	34	STIAN PAULSEN RACING	NOR	Stian Paulsen	NOR	SEAT Leon Cup Racer MK3	24	11	10	2'01.150	13	10	2'15.195	<b>2'01.150</b>	172.140
7	20	LOURENÇO BEIRÃO	PRT	Lourenço Beirão Da Veiga	PRT	SEAT Leon Cup Racer MK3	24	13	12	2'01.158	11	7	2'19.272	<b>2'01.158</b>	172.129
8	6	PCR SPORT	ESP	Mikel Azcona	ESP	SEAT Leon Cup Racer MK3	17	12	10	2'01.189	5	4	2'17.375	<b>2'01.189</b>	172.085
9	28	MONLAU COMPETICIÓN	ESP	Fran Rueda	ESP	SEAT Leon Cup Racer MK3	26	14	9	2'01.266	12	10	2'18.307	<b>2'01.266</b>	171.976
10	22	BAPORO MOTORSPORT	GBR	Alexander Morgan	GBR	SEAT Leon Cup Racer MK3	28	14	12	2'01.308	14	10	2'18.672	<b>2'01.308</b>	171.916
11	9	LUCILE CYPRIANO	FRA	Lucile Cypriano	FRA	SEAT Leon Cup Racer MK3	25	13	6	2'01.336	12	9	2'15.109	<b>2'01.336</b>	171.876
12	19	B3 HUNGARY KFT	HUN	Attila Tassi	HUN	SEAT Leon Cup Racer MK3	17	5	4	2'01.499	12	11	2'19.957	<b>2'01.499</b>	171.646
13	8	WOLF-POWER RACING	RSA	Shane Anthony Williams	RSA	SEAT Leon Cup Racer MK3	24	11	7	2'01.607	13	12	2'17.405	<b>2'01.607</b>	171.493
14	24	TARGET, SRL	CHE	Andrina Gugger	CHE	SEAT Leon Cup Racer MK3	23	11	9	2'01.609	12	8	2'18.393	<b>2'01.609</b>	171.491
15	10	TARGET, SRL	CRI	Mauricio Hernandez	CRI	SEAT Leon Cup Racer MK3	24	12	9	2'01.667	12	8	2'20.638	<b>2'01.667</b>	171.409
16	61	SEAT AUSTRIA	AUT	Mario Dablander	AUT	SEAT Leon Cup Racer MK3	21	9	4	2'01.669	12	6	2'18.475	<b>2'01.669</b>	171.406
17	23	STEFANO ZANINI	MCO	Stefano Zanini	MCO	SEAT Leon Cup Racer MK3	24	11	6	2'02.130	13	11	2'21.011	<b>2'02.130</b>	170.759
18	87	B3 HUNGARY KFT	HUN	Edina Bús	HUN	SEAT Leon Cup Racer MK3	25	12	7	2'02.156	13	8	2'20.088	<b>2'02.156</b>	170.723
19	77	JEAN-LAURENT NAVARRO	FRA	Jean-Laurent Navarro	FRA	SEAT Leon Cup Racer MK3	25	14	11	2'02.338	11	10	2'19.637	<b>2'02.338</b>	170.469
20	5	THIBAUT MOURGUES	FRA	Thibaut Mourgues	FRA	SEAT Leon Cup Racer MK3	27	14	10	2'02.386	13	10	2'16.763	<b>2'02.386</b>	170.402
21	12	LEIN RACING	MNE	Dejan Bulatovic	MNE	SEAT Leon Cup Racer MK3	18	6	4	2'02.484	12	11	2'19.960	<b>2'02.484</b>	170.266
22	4	MONLAU COMPETICIÓN	ESP	David Cebrian	ESP	SEAT Leon Cup Racer MK3	25	13	8	2'02.656	12	9	2'20.492	<b>2'02.656</b>	170.027
23	17	LEIN RACING	SRB	Mladen Lalusic	SRB	SEAT Leon Cup Racer MK3	26	12	9	2'03.334	14	7	2'19.402	<b>2'03.334</b>	169.092
24	88	FINLAY CROCKER	GBR	Finlay Crocker	GBR	SEAT Leon Cup Racer MK3	25	13	12	2'03.416	12	6	2'20.676	<b>2'03.416</b>	168.980
25	21	MARIE BAUS-COPPENS	FRA	Marie Baus - Coppens	FRA	SEAT Leon Cup Racer MK3	28	15	12	2'03.450	13	11	2'20.502	<b>2'03.450</b>	168.933
26	73	MATEU CLEMENT	FRA	Mateu Clement	FRA	SEAT Leon Cup Racer MK3	28	14	7	2'03.883	14	10	2'19.731	<b>2'03.883</b>	168.343
27	67	MARCO PELLEGRINI	ITA	Marco Pellegrini	ITA	SEAT Leon Cup Racer MK3	19	5	2	2'05.760	14	12	2'21.071	<b>2'05.760</b>	165.830

Autodromo di Monza on October 02, 2015

At 15:50

RACE DIRECTOR

TIMEKEEPER



Santísima Trinidad 30 28010 MADRID  
Tel y Fax 91.448.32.06  
www.cronococa.com  
e-mail: info@cronococa.com




Juan Bravo 17 28006 MADRID  
Tel 91.432.27.50  
www.gtssport.es  
e-mail: info@gtssport.es