

### RACE - 3 CLASSIFICATION

Clas.	Nº	Entrant	Driver	Nat.	Driver 2	Nat.	Car Type	Cat.	Clas.	Laps	Total Time	Km/h.	Gap	Best	Time	Km/h.
1	88	360 Racing	<u>Terrence Woodward</u>	UK	Ross Kaiser	UK	SR8	M	1º	32	1.00'35.937	183.544		28	1'48.309	192.550
2	2	Nielsen Racing	Tony Wells	UK	<u>James Littlejohn</u>	UK	SR8	M	2º	32	1.01'07.673	181.956	31"736	20	1'48.684	191.885
3	46	360 Racing	<u>Alex Kapadia</u>	UK	Jeremy Ferguson		SR8	M	3º	32	1.01'37.867	180.470	1'01"930	6	1'48.836	191.617
4	52	Nielsen Racing	Victor Correa	BR	<u>Paddy MacClughan</u>		SR8	M	4º	32	1.01'45.445	180.101	1'09"508	32	1'49.570	190.334
5	20	Radical France	<u>Alain Costa</u>	Monaco			SR8	MF	1º	32	1.02'00.188	179.388	1'24"251	15	1'50.613	188.539
6	69	Jack White Racing	James Winslow	Australia	<u>John Corbett</u>		SR8	M	5º	31	1.00'27.719	178.211	1 Lap.	24	1'50.900	188.051
7	74	Works	<u>James Abbott</u>	UK			Spyder	I	1º	31	1.00'53.206	176.968	1 Lap.	29	1'48.708	191.843
8	5	Nielsen Racing	Jaap Bartels	NL	<u>Stuart Moseley</u>		Spyder	M	6º	31	1.01'35.483	174.943	1 Lap.	9	1'50.971	187.931
9	29	RAW	<u>Marcello Marateotto</u>	IT	Marco Cencetti	IT	SR3 RSX	S	1º	30	1.00'57.142	171.075	2 Lap.	26	1'55.978	179.817
10	6	Supreme	Andy Cummings	UK	<u>Bradley Ellis</u>	UK	SR3	S	2º	30	1.01'12.387	170.365	2 Lap.	10	1'57.185	177.965
11	3	Nielsen Racing	<u>Ricardo Dona</u>	IT			SR3 RSX	SF	1º	30	1.01'18.936	170.062	2 Lap.	28	1'57.668	177.235
12	14	Works	<u>Roger Bromiley</u>	UK			SR3 RSX	S	3º	30	1.01'31.238	169.495	2 Lap.	18	1'58.114	176.566
13	17	Rockmotorsport	<u>Jani Hierppe</u>	FI			SR3 RSX	S	4º	30	1.01'31.606	169.478	2 Lap.	23	1'58.406	176.130
14	70	Privateer	<u>Josef Koller</u>	CZ	Ondrej Navratil	CZ	SR3 RSX	S	5º	30	1.01'47.298	168.761	2 Lap.	26	1'58.702	175.691
15	62	Works	<u>Mark Crader</u>	UK			SR3 RSX	SF	2º	30	1.02'26.138	167.011	2 Lap.	30	1'59.353	174.733
			<b>NOT CLASSIFIED</b>													
16	44	Works	<u>Shahin Nouri</u>	CH			SR3 RSX	S	6º	26	1.02'09.434	145.391	6 Lap.	23	1'57.687	177.206
17	7	Radical France	<u>Jean Gandar</u>	BR			Spyder	MF	2º	20	40'16.248	172.622	12 Lap.	20	1'53.791	183.273

**Fastest lap Woodward - Kaiser 1'48.309 192.550 Km/h.**

Autodromo di Monza on October 04, 2015

At 16:33

RACE DIRECTOR

TIMEKEEPER

### RACE - 3 PIT STOPS

Nº	Time of day	Entrant	Driver	Nat.	Driver_2	Nat.	Car Type	Cat.	Race Time	Stop Nº	Stop Time	Handicap	Penalty
88	15.52'06.190	360 Racing	Terrence Woodward	UK	Ross Kaiser	UK	SR8	M	22'24.964	1	01'44.901	01'10	
14	15.53'55.950	Works	Roger Bromiley	UK			SR3 RSX	S	24'14.322	1	01'29.641	01'25	
3	15.53'46.900	Nielsen Racing	Ricardo Dona	IT			SR3 RSX	SF	24'05.526	1	01'39.435	01'35	
29	15.53'34.550	RAW	Marcello Marateotto	IT	Marco Cencetti	IT	SR3 RSX	S	23'53.106	1	01'55.545	01'50	
74	15.52'30.020	Works	James Abbott	UK			Spyder	I	22'48.537	1	03'01.840	01'20	
70	15.56'10.290	Privateer	Josef Koller	CZ	Ondrej Navratil	CZ	SR3 RSX	S	26'28.881	1	01'20.925	01'10	
52	15.56'16.530	Nielsen Racing	Victor Correa	BR	Paddy MacClughan		SR8	M	26'35.081	1	02'02.760	01'20	
7	15.57'13.230	Radical France	Jean Gandar	BR			Spyder	MF	27'31.790	1	01'17.065	01'15	
17	15.58'04.520	Rockmotorsport	Jani Hjerpe	FI			SR3 RSX	S	28'23.079	1	01'20.303	01'15	
62	15.58'15.370	Works	Mark Crader	UK			SR3 RSX	SF	28'33.757	1	01'10.878	01'15	00'04.122
69	15.58'32.110	Jack White Racing	James Winslow	Australia	John Corbett		SR8	M	28'50.656	1	01'29.318	01'10	
44	15.58'50.060	Works	Shahin Nouri	CH			SR3 RSX	S	29'08.441	1	01'25.748	01'20	
5	16.01'30.150	Nielsen Racing	Jaap Bartels	NL	Stuart Moseley		Spyder	M	31'48.703	1	01'37.681	01'30	
46	16.01'10.770	360 Racing	Alex Kapadia	UK	Jeremy Ferguson		SR8	M	31'29.221	1	02'14.872	01'40	
20	16.05'07.970	Radical France	Alain Costa	Monaco			SR8	MF	35'26.573	1	01'41.644	01'20	
2	16.09'53.700	Nielsen Racing	Tony Wells	UK	James Littlejohn	UK	SR8	M	40'12.249	1	02'14.058	01'40	
6	16.10'57.950	Supreme	Andy Cummings	UK	Bradley Ellis	UK	SR3	S	41'16.474	1	01'39.668	01'35	

Autodromo di Monza on October 04, 2015

At 16:15

RACE DIRECTOR

TIMEKEEPER

LAP ANALYSIS RACE - 3

Number	2			3			5			6			7			14		
	Lap Time	Partial	Speed	Lap Time	Partial	Speed	Lap Time	Partial	Speed	Lap Time	Partial	Speed	Lap Time	Partial	Speed	Lap Time	Partial	Speed
1 <sup>a</sup> - 1	0'37.647	0'37.647	233.262	0'43.096	0'43.096	224.067	0'38.641	0'38.641	226.891	0'42.615	0'42.615	222.223	0'45.397	0'45.397	161.677	0'43.666	0'43.666	204.159
1 <sup>a</sup> - 2	1'15.644	0'37.997		1'25.955	0'42.859		1'19.412	0'40.771		1'22.407	0'39.792		1'27.865	0'42.468		1'25.087	0'41.421	
1 <sup>a</sup> - 3	1'53.252	0'37.608		2'06.819	0'40.864		1'58.123	0'38.711		2'02.430	0'40.023		2'08.996	0'41.131		2'06.252	0'41.165	
2 <sup>a</sup> - 1	0'35.334	0'35.334	243.793	0'39.207	0'39.207	228.330	0'36.583	0'36.583	245.455	0'38.727	0'38.727	229.788	0'38.086	0'38.086	250.001	0'39.124	0'39.124	233.262
2 <sup>a</sup> - 2	1'12.648	0'37.314		1'20.487	0'41.280		1'15.120	0'38.537		1'17.899	0'39.172		1'19.031	0'40.945		1'20.533	0'41.409	
2 <sup>a</sup> - 3	1'50.083	0'37.435		2'02.451	0'41.964		1'53.440	0'38.320		1'57.768	0'39.869		1'59.318	0'40.287		2'01.404	0'40.871	
3 <sup>a</sup> - 1	0'35.351	0'35.351	263.415	0'39.189	0'39.189	229.300	0'35.975	0'35.975	257.757	0'38.725	0'38.725	229.300	0'37.187	0'37.187	247.140	0'39.545	0'39.545	219.067
3 <sup>a</sup> - 2	1'12.434	0'37.083		1'19.650	0'40.461		1'13.869	0'37.894		1'18.009	0'39.284		1'17.865	0'40.678		1'20.321	0'40.776	
3 <sup>a</sup> - 3	1'49.709	0'37.275		1'59.966	0'40.316		1'52.060	0'38.191		1'57.825	0'39.816		1'57.894	0'40.029		2'00.937	0'40.616	
4 <sup>a</sup> - 1	0'35.142	0'35.142	266.667	0'39.025	0'39.025	228.814	0'35.852	0'35.852	258.993	0'38.661	0'38.661	228.814	0'37.743	0'37.743	253.522	0'39.166	0'39.166	231.760
4 <sup>a</sup> - 2	1'12.061	0'36.919		1'19.399	0'40.374		1'13.711	0'37.859		1'17.606	0'39.945		1'19.332	0'41.589		1'19.771	0'40.605	
4 <sup>a</sup> - 3	1'49.232	0'37.171		2'00.425	0'41.026		1'51.779	0'38.068		1'57.360	0'39.754		1'59.388	0'40.056		2'00.620	0'40.849	
5 <sup>a</sup> - 1	0'35.135	0'35.135	262.774	0'38.927	0'38.927	229.300	0'35.774	0'35.774	258.993	0'38.722	0'38.722	227.849	0'37.171	0'37.171	253.522	0'38.626	0'38.626	236.843
5 <sup>a</sup> - 2	1'12.032	0'36.897		1'19.078	0'40.151		1'13.286	0'37.512		1'17.698	0'38.976		1'17.496	0'40.325		1'19.048	0'40.422	
5 <sup>a</sup> - 3	1'49.131	0'37.099		2'00.375	0'41.297		1'51.163	0'37.877		1'57.424	0'39.726		1'56.943	0'39.447		2'01.024	0'41.976	
6 <sup>a</sup> - 1	0'35.225	0'35.225	266.010	0'38.895	0'38.895	229.788	0'35.818	0'35.818	260.241	0'39.010	0'39.010	229.300	0'37.708	0'37.708	213.862	0'39.029	0'39.029	216.433
6 <sup>a</sup> - 2	1'12.451	0'37.226		1'19.070	0'40.175		1'13.344	0'37.526		1'18.118	0'39.108		1'17.953	0'40.245		1'21.886	0'42.857	
6 <sup>a</sup> - 3	1'49.715	0'37.264		1'59.824	0'40.754		1'51.058	0'37.714		1'57.899	0'39.781		1'57.271	0'39.318		2'03.132	0'41.246	
7 <sup>a</sup> - 1	0'35.238	0'35.238	266.667	0'39.042	0'39.042	229.300	0'36.304	0'36.304	259.616	0'38.872	0'38.872	227.849	0'37.717	0'37.717	250.581	0'38.824	0'38.824	234.783
7 <sup>a</sup> - 2	1'12.239	0'37.001		1'19.010	0'39.968		1'14.528	0'38.224		1'17.882	0'39.010		1'17.536	0'39.819		1'19.092	0'40.268	
7 <sup>a</sup> - 3	1'49.465	0'37.226		1'59.320	0'40.310		1'52.778	0'38.250		1'58.174	0'40.292		1'57.088	0'39.552		1'59.890	0'40.798	
8 <sup>a</sup> - 1	0'35.172	0'35.172	267.327	0'38.795	0'38.795	228.814	0'35.937	0'35.937	258.993	0'38.627	0'38.627	228.814	0'37.296	0'37.296	248.848	0'38.834	0'38.834	233.767
8 <sup>a</sup> - 2	1'12.352	0'37.180		1'18.560	0'39.765		1'13.476	0'37.539		1'17.775	0'39.148		1'17.278	0'39.982		1'19.797	0'40.963	
8 <sup>a</sup> - 3	1'49.662	0'37.310		1'58.936	0'40.376		1'51.133	0'37.657		1'57.710	0'39.935		1'56.721	0'39.443		2'00.374	0'40.577	
9 <sup>a</sup> - 1	0'35.238	0'35.238	266.667	0'38.836	0'38.836	228.814	0'35.693	0'35.693	260.241	0'38.667	0'38.667	228.814	0'36.718	0'36.718	252.337	0'39.198	0'39.198	232.259
9 <sup>a</sup> - 2	1'12.465	0'37.227		1'18.946	0'40.110		1'13.232	0'37.593		1'17.720	0'39.053		1'16.655	0'39.937		1'20.200	0'41.002	
9 <sup>a</sup> - 3	1'49.648	0'37.183		1'59.187	0'40.241		1'50.971	0'37.739		1'57.373	0'39.653		1'55.642	0'38.987		2'00.974	0'40.774	
10 <sup>a</sup> - 1	0'35.116	0'35.116	269.327	0'38.754	0'38.754	229.300	0'35.772	0'35.772	260.241	0'38.595	0'38.595	228.814	0'37.102	0'37.102	248.848	0'38.684	0'38.684	234.274
10 <sup>a</sup> - 2	1'12.775	0'37.659		1'18.505	0'39.751		1'13.220	0'37.448		1'17.513	0'38.918		1'17.036	0'39.934		1'19.600	0'40.916	
10 <sup>a</sup> - 3	1'49.981	0'37.206		1'58.854	0'40.349		1'50.979	0'37.759		1'57.185	0'39.672		1'56.581	0'39.545		2'00.115	0'40.515	
11 <sup>a</sup> - 1	0'35.041	0'35.041	267.991	0'38.718	0'38.718	229.300	0'35.982	0'35.982	258.374	0'38.715	0'38.715	228.330	0'36.705	0'36.705	252.337	0'38.696	0'38.696	234.274
11 <sup>a</sup> - 2	1'12.678	0'37.637		1'18.503	0'39.785		1'13.676	0'37.694		1'17.722	0'39.007		1'16.304	0'39.599		1'18.966	0'40.270	
11 <sup>a</sup> - 3	1'49.838	0'37.160		1'58.523	0'40.020		1'51.456	0'37.780		1'57.433	0'39.711		1'55.429	0'39.125		1'59.385	0'40.419	
12 <sup>a</sup> - 1	0'35.016	0'35.016	268.657	0'38.890	0'38.890	229.300	0'35.822	0'35.822	259.616	0'38.678	0'38.678	228.330	0'37.036	0'37.036	247.707	0'38.720	0'38.720	234.274
12 <sup>a</sup> - 2	1'12.098	0'37.082		1'18.880	0'39.990		1'13.254	0'37.432		1'17.692	0'39.014		1'16.995	0'39.949		1'18.748	0'40.028	
12 <sup>a</sup> - 3	1'49.340	0'37.242		2'06.692	0'47.812	PIT	1'51.526	0'38.272		1'57.385	0'39.693		1'55.862	0'38.877		2'05.903	0'47.155	PIT
13 <sup>a</sup> - 1	0'35.018	0'35.018	267.991	0'38.741	0'38.741	229.300	0'36.142	0'36.142	255.925	0'38.849	0'38.849	230.278	0'37.342	0'37.342	246.014	0'38.635	0'38.635	233.767
13 <sup>a</sup> - 2	1'12.228	0'37.210		1'18.980	0'40.239		1'14.011	0'37.869		1'18.297	0'39.448		1'16.612	0'39.270		1'18.850	0'40.215	
13 <sup>a</sup> - 3	1'49.342	0'37.114		1'59.819	0'40.839		1'51.649	0'37.921		1'57.994	0'39.888		1'56.800	0'38.624		2'02.739	0'40.282	
14 <sup>a</sup> - 1	0'35.115	0'35.115	267.991	0'38.741	0'38.741	229.300	0'36.142	0'36.142	255.925	0'38.849	0'38.849	230.278	0'37.342	0'37.342	246.014	0'38.635	0'38.635	233.767
14 <sup>a</sup> - 2	1'12.038	0'36.923		1'18.980	0'40.239		1'14.011	0'37.869		1'18.297	0'39.448		1'16.612	0'39.270		1'18.850	0'40.215	
14 <sup>a</sup> - 3	1'49.110	0'37.072		1'59.819	0'40.839		1'51.908	0'37.897		1'58.086	0'39.789		1'56.800	0'38.624		2'02.739	0'40.282	
15 <sup>a</sup> - 1	0'35.028	0'35.028	268.657	0'39.563	0'39.563	230.770	0'36.016	0'36.016	258.993	0'38.576	0'38.576	228.330	0'36.535	0'36.535	204.934	0'38.852	0'38.852	233.767
15 <sup>a</sup> - 2	1'12.785	0'37.757		1'20.248	0'40.685		1'13.759	0'37.743		1'17.757	0'39.181		1'16.655	0'39.412		1'18.987	0'40.135	
15 <sup>a</sup> - 3	1'50.065	0'37.280		2'00.475	0'40.227		1'51.893	0'38.134		1'57.333	0'39.576		1'56.800	0'38.856		2'00.326	0'40.326	
16 <sup>a</sup> - 1	0'35.002	0'35.002	267.327	0'38.835	0'38.835	230.278	0'36.110	0'36.110	256.533	0'38.752	0'38.752	227.849	0'36.713	0'36.713	250.000	0'38.612	0'38.612	234.274
16 <sup>a</sup> - 2	1'11.995	0'36.993		1'18.592	0'39.757		1'14.086	0'37.976		1'17.960	0'39.208		1'15.768	0'39.055		1'18.261	0'39.649	
16 <sup>a</sup> - 3	1'49.074	0'37.079		1'58.512	0'39.920		1'52.149	0'38.063		1'57.687	0'39.727		1'54.768	0'39.000		1'58.332	0'40.071	
17 <sup>a</sup> - 1	0'35.122	0'35.122	267.327	0'38.722	0'38.722	229.788	0'35.989	0'35.989	255.925	0'38.627	0'38.627	228.814	0'36.900	0'36.900	243.244	0'38.710	0'38.710	235.295
17 <sup>a</sup> - 2	1'12.051	0'36.929		1'19.122	0'40.400		1'14.797	0'38.808		1'17.753	0'39.126		1'15.498	0'38.598		1'18.500	0'39.790	
17 <sup>a</sup> - 3	1'49.039	0'36.9																

LAP ANALYSIS RACE - 3

On October 03 - 04  
Autodromo di Monza

Number Lap	2			3			5			6			7			14		
	Lap Time	Partial	Speed	Lap Time	Partial	Speed	Lap Time	Partial	Speed	Lap Time	Partial	Speed	Lap Time	Partial	Speed	Lap Time	Partial	Speed
26 <sup>a</sup> - 1	0'35.199	0'35.199	260.241	0'38.859	0'38.859	230.278	0'36.113	0'36.113	257.757	0'39.456	0'39.456	228.330				0'39.143	0'39.143	235.295
26 <sup>a</sup> - 2	1'13.371	0'38.172		1'18.476	0'39.617		1'14.786	0'38.673		1'20.036	0'40.580					1'20.107	0'40.964	
26 <sup>a</sup> - 3	1'51.396	0'38.025		1'58.331	0'39.855		1'53.995	0'39.209		2'01.215	0'41.179					2'00.276	0'40.169	
27 <sup>a</sup> - 1	0'35.392	0'35.392	260.241	0'38.412	<u>0'38.412</u>	229.788	0'36.292	0'36.292	250.581	0'39.174	0'39.174	227.849				0'38.688	0'38.688	234.783
27 <sup>a</sup> - 2	1'13.506	0'38.114		1'18.152	0'39.740		1'14.832	0'38.540		1'20.589	0'41.415					1'18.569	0'39.881	
27 <sup>a</sup> - 3	1'51.913	0'38.407		1'57.988	0'39.836		1'53.554	0'38.722		2'02.038	0'41.449					1'58.699	0'40.130	
28 <sup>a</sup> - 1	0'35.114	0'35.114	262.136	0'38.418	0'38.418	229.788	0'36.095	0'36.095	260.241	0'39.023	0'39.023	229.788				0'38.559	0'38.559	234.783
28 <sup>a</sup> - 2	1'13.396	0'38.282		1'17.736	<u>0'39.318</u>		1'14.838	0'38.743		1'19.859	0'40.836					1'18.235	0'39.676	
28 <sup>a</sup> - 3	1'51.528	0'38.132		1'57.668	0'39.932		1'53.247	0'38.409		2'01.304	0'41.445					1'58.373	0'40.138	
29 <sup>a</sup> - 1	0'35.250	0'35.250	264.059	0'38.810	0'38.810	228.814	0'35.927	0'35.927	258.993	0'39.334	0'39.334	229.300				0'38.367	<u>0'38.367</u>	236.324
29 <sup>a</sup> - 2	1'13.565	0'38.315		1'18.598	0'39.788		1'14.208	0'38.281		1'20.104	0'40.770					1'20.139	0'41.772	
29 <sup>a</sup> - 3	1'51.791	0'38.226		1'58.454	0'39.856		1'52.855	0'38.647		2'01.759	0'41.655					2'00.251	0'40.112	
30 <sup>a</sup> - 1	0'35.120	0'35.120	262.774	0'38.768	0'38.768	229.300	0'37.281	0'37.281	232.259	0'39.400	0'39.400	228.330				0'43.959	0'43.959	234.783
30 <sup>a</sup> - 2	1'13.096	0'37.976		1'18.341	0'39.573		1'16.507	0'39.226		1'20.453	0'41.053					1'25.318	0'41.359	
30 <sup>a</sup> - 3	1'51.413	0'38.317		1'58.453	0'40.112		1'56.581	0'40.074		2'01.979	0'41.526					2'05.789	0'40.471	
31 <sup>a</sup> - 1	0'35.680	0'35.680	261.502				0'37.422	0'37.422	214.712									
31 <sup>a</sup> - 2	1'13.944	0'38.264					1'16.910	0'39.488										
31 <sup>a</sup> - 3	1'52.218	0'38.274					1'57.058	0'40.148										
32 <sup>a</sup> - 1	0'34.989	0'34.989	266.667															
32 <sup>a</sup> - 2	1'13.522	0'38.533																
32 <sup>a</sup> - 3	1'51.515	0'37.993																

Ideal Lap	
0'34.871	0'34.871
1'11.715	0'36.844
1'48.579	0'36.864

Ideal Lap	
0'38.412	0'38.412
1'17.730	0'39.318
1'57.418	0'39.688

Ideal Lap	
0'35.693	0'35.693
1'13.125	0'37.432
1'50.782	0'37.657

Ideal Lap	
0'38.576	0'38.576
1'17.494	0'38.918
1'57.070	0'39.576

Ideal Lap	
0'36.429	0'36.429
1'15.027	0'38.598
1'53.262	0'38.235

Ideal Lap	
0'38.367	0'38.367
1'17.966	0'39.599
1'57.848	0'39.882

Ideal Best Lap	
0'34.412	0'34.412
1'11.256	0'36.844
1'48.120	0'36.864



LAP ANALYSIS RACE - 3

Number	17			20			29			44			46			52		
	Lap Time	Partial	Speed	Lap Time	Partial	Speed	Lap Time	Partial	Speed	Lap Time	Partial	Speed	Lap Time	Partial	Speed	Lap Time	Partial	Speed
1 <sup>a</sup> - 1	0'46.283	0'46.283	165.391	0'38.820	0'38.820	213.862	0'42.976	0'42.976	222.681	9'40.217	9'40.217	173.914	0'51.156	0'51.156	204.159	0'38.661	0'38.661	225.470
1 <sup>a</sup> - 2	1'30.371	0'44.088		1'17.996	0'39.176		1'23.511	0'40.535		10'24.892	0'44.675		1'31.137	0'39.981		1'17.882	0'39.221	
1 <sup>a</sup> - 3	2'12.922	0'42.551		1'56.833	0'38.837		2'04.036	0'40.525		11'09.105	0'44.213		2'10.215	0'39.078		1'56.760	0'38.878	
2 <sup>a</sup> - 1	0'40.276	0'40.276	227.849	0'35.610	0'35.610	259.616	0'38.902	0'38.902	232.759	0'39.481	0'39.481	228.330	0'35.723	0'35.723	243.244	0'35.895	0'35.895	244.344
2 <sup>a</sup> - 2	1'22.446	0'42.170		1'14.238	0'38.628		1'18.835	0'39.933		1'21.192	0'41.711		1'13.960	0'38.237		1'14.693	0'38.798	
2 <sup>a</sup> - 3	2'04.149	0'41.703		1'52.815	0'38.577		1'59.513	0'40.678		2'04.005	0'42.813		1'51.826	0'37.866		1'53.214	0'38.521	
3 <sup>a</sup> - 1	0'39.384	0'39.384	232.259	0'35.107	0'35.107	264.706	0'38.761	0'38.761	233.262	0'39.064	0'39.064	235.808	0'35.190	0'35.190	260.870	0'35.539	0'35.539	259.616
3 <sup>a</sup> - 2	1'20.638	0'41.254		1'13.417	0'38.310		1'18.929	0'40.168		1'20.409	0'41.345		1'13.152	0'37.962		1'13.282	0'37.743	
3 <sup>a</sup> - 3	2'01.551	0'40.913		1'51.430	0'38.013		1'59.251	0'40.322		2'01.431	0'41.022		1'50.335	0'37.183		1'51.673	0'38.391	
4 <sup>a</sup> - 1	0'39.264	0'39.264	232.259	0'35.120	0'35.120	267.991	0'38.786	0'38.786	232.759	0'38.382	0'38.382	236.324	0'34.730	0'34.730	267.991	0'35.243	0'35.243	260.870
4 <sup>a</sup> - 2	1'19.364	0'40.613		1'13.054	0'37.934		1'18.870	0'40.084		1'18.832	0'40.450		1'12.128	0'37.398		1'13.012	0'37.769	
4 <sup>a</sup> - 3	2'01.109	0'41.082		1'51.420	0'37.988		1'58.984	0'40.626		1'59.874	0'40.410		1'49.137	0'37.083		1'51.199	0'38.136	
5 <sup>a</sup> - 1	0'39.264	0'39.264	232.259	0'35.120	0'35.120	267.991	0'38.786	0'38.786	232.759	0'38.382	0'38.382	236.324	0'34.730	0'34.730	267.991	0'35.243	0'35.243	260.870
5 <sup>a</sup> - 2	1'19.877	0'40.613		1'13.054	0'37.934		1'18.870	0'40.084		1'18.832	0'40.450		1'12.128	0'37.398		1'13.012	0'37.769	
5 <sup>a</sup> - 3	2'00.553	0'40.676		1'51.389	0'38.335		1'59.090	0'40.220		1'59.372	0'40.540		1'49.055	0'36.927		1'51.360	0'38.348	
6 <sup>a</sup> - 1	0'39.224	0'39.224	233.262	0'35.423	0'35.423	266.667	0'38.623	0'38.623	231.760	0'38.585	0'38.585	235.295	0'34.727	0'34.727	267.991	0'35.621	0'35.621	264.706
6 <sup>a</sup> - 2	1'20.169	0'40.415		1'13.603	0'38.180		1'18.524	0'39.901		1'18.320	0'39.735		1'11.786	0'37.059		1'13.406	0'37.785	
6 <sup>a</sup> - 3	2'00.164	0'40.525		1'51.932	0'38.329		1'58.716	0'40.192		1'59.286	0'40.966		1'48.836	0'37.050		1'52.022	0'38.616	
7 <sup>a</sup> - 1	0'38.766	0'38.766	233.767	0'35.185	0'35.185	265.357	0'38.960	0'38.960	233.767	0'38.642	0'38.642	235.808	0'34.648	0'34.648	266.010	0'35.736	0'35.736	248.276
7 <sup>a</sup> - 2	1'19.372	0'40.606		1'13.155	0'37.970		1'19.035	0'40.075		1'18.561	0'39.919		1'13.092	0'38.444		1'13.354	0'37.618	
7 <sup>a</sup> - 3	2'01.081	0'41.709		1'51.344	0'38.189		1'59.121	0'40.086		1'58.891	0'40.330		1'50.665	0'37.573		1'51.890	0'37.536	
8 <sup>a</sup> - 1	0'39.290	0'39.290	232.259	0'35.130	0'35.130	266.667	0'38.763	0'38.763	233.262	0'38.214	0'38.214	236.843	0'34.812	0'34.812	267.991	0'36.489	0'36.489	262.136
8 <sup>a</sup> - 2	1'20.407	0'41.117		1'13.190	0'38.060		1'18.649	0'39.886		1'17.777	0'39.563		1'12.158	0'37.346		1'14.425	0'37.936	
8 <sup>a</sup> - 3	2'02.106	0'41.699		1'51.384	0'38.194		1'59.022	0'40.373		1'58.854	0'41.077		1'49.982	0'37.824		1'52.331	0'37.906	
9 <sup>a</sup> - 1	0'38.835	0'38.835	230.278	0'35.227	0'35.227	265.357	0'38.815	0'38.815	231.760	0'38.242	0'38.242	235.808	0'35.111	0'35.111	266.010	0'36.933	0'36.933	252.928
9 <sup>a</sup> - 2	1'19.485	0'40.650		1'12.891	0'37.664		1'18.731	0'39.916		1'17.944	0'39.702		1'12.549	0'37.438		1'14.726	0'37.793	
9 <sup>a</sup> - 3	2'00.670	0'41.185		1'50.813	0'37.922		1'58.863	0'40.132		1'58.528	0'40.584		1'49.672	0'37.123		1'52.735	0'38.009	
10 <sup>a</sup> - 1	0'38.911	0'38.911	231.264	0'35.097	0'35.097	268.657	0'38.796	0'38.796	232.759	0'38.493	0'38.493	234.783	0'34.862	0'34.862	265.357	0'36.053	0'36.053	236.324
10 <sup>a</sup> - 2	1'18.987	0'40.076		1'13.724	0'38.627		1'18.603	0'39.870		1'18.101	0'39.608		1'13.651	0'38.789		1'13.557	0'37.504	
10 <sup>a</sup> - 3	1'59.758	0'40.771		1'51.521	0'37.797		1'58.909	0'40.306		2'04.694	0'46.593	PIT	1'51.270	0'37.619		1'51.394	0'37.837	
11 <sup>a</sup> - 1	0'38.951	0'38.951	230.278	0'35.336	0'35.336	264.706	0'38.778	0'38.778	231.264	1'58.503	1'58.503	189.807	0'35.053	0'35.053	268.657	0'36.017	0'36.017	254.118
11 <sup>a</sup> - 2	1'19.364	0'40.413		1'13.583	0'38.247		1'18.259	0'39.441		2'38.099	0'39.596		1'12.423	0'37.370		1'13.746	0'37.729	
11 <sup>a</sup> - 3	2'00.119	0'40.755		1'51.579	0'37.996		1'58.209	0'39.950		3'18.398	0'40.299		1'49.738	0'37.315		1'51.635	0'37.889	
12 <sup>a</sup> - 1	0'38.984	0'38.984	233.262	0'35.119	0'35.119	268.657	0'38.694	0'38.694	231.760	0'38.328	0'38.328	234.783	0'35.028	0'35.028	255.925	0'35.913	0'35.913	250.000
12 <sup>a</sup> - 2	1'19.094	0'40.110		1'13.583	0'38.247		1'18.186	0'39.397		1'17.887	0'39.559		1'14.101	0'39.073		1'13.613	0'37.700	
12 <sup>a</sup> - 3	1'59.486	0'40.392		1'51.725	0'38.209		2'04.906	0'46.720	PIT	1'57.900	0'40.013		1'51.358	0'37.257		1'51.424	0'37.811	
13 <sup>a</sup> - 1	0'39.043	0'39.043	231.760	0'35.176	0'35.176	263.415	0'38.379	0'38.379	233.262	0'38.991	0'38.991	236.324	0'34.661	0'34.661	268.657	0'35.963	0'35.963	238.939
13 <sup>a</sup> - 2	1'19.031	0'39.988		1'12.890	0'37.714		1'17.474	0'39.095		1'18.380	0'39.389		1'12.313	0'37.652		1'13.552	0'37.589	
13 <sup>a</sup> - 3	1'59.331	0'40.300		1'51.039	0'38.149		3'46.611	0'39.686		1'58.789	0'40.913		1'48.950	0'37.142		1'51.500	0'38.029	PIT
14 <sup>a</sup> - 1	0'38.900	0'38.900	230.770	0'35.092	0'35.092	267.991	0'38.379	0'38.379	233.262	0'38.991	0'38.991	236.324	0'34.661	0'34.661	268.657	0'35.963	0'35.963	238.939
14 <sup>a</sup> - 2	1'18.738	0'39.838		1'12.738	0'37.646		1'17.474	0'39.095		1'18.380	0'39.389		1'12.313	0'37.652		1'13.552	0'37.589	
14 <sup>a</sup> - 3	2'05.472	0'46.734	PIT	1'50.830	0'38.092		1'57.854	0'40.380		1'58.540	0'40.160		1'49.410	0'37.097		1'58.578	0'40.026	PIT
15 <sup>a</sup> - 1	1'54.590	1'54.590	188.154	0'35.004	0'35.004	262.774	0'39.400	0'39.400	218.624	0'38.182	0'38.182	235.295	0'34.792	0'34.792	266.667	2'33.103	2'33.103	208.495
15 <sup>a</sup> - 2	2'35.735	0'41.145		1'12.533	0'37.529		1'19.650	0'40.250		1'17.543	0'39.361		1'12.329	0'37.537		3'10.843	0'37.740	
15 <sup>a</sup> - 3	3'17.190	0'41.455		1'50.613	0'38.080		1'59.694	0'40.044		1'58.059	0'40.516		1'49.306	0'36.977		3'48.967	0'38.124	
16 <sup>a</sup> - 1	0'40.066	0'40.066	229.788	0'35.103	0'35.103	266.667	0'38.184	0'38.184	234.274	0'38.756	0'38.756	220.859	0'34.699	0'34.699	266.010	0'35.395	0'35.395	264.059
16 <sup>a</sup> - 2	1'20.338	0'40.272		1'12.950	0'37.847		1'17.857	0'39.673		1'18.216	0'39.460		1'12.045	0'37.346		1'13.084	0'37.689	
16 <sup>a</sup> - 3	2'00.727	0'40.389		1'51.182	0'38.232		1'57.528	0'39.671		1'58.817	0'40.601		1'49.321	0'37.276		1'51.197	0'38.113	
17 <sup>a</sup> - 1	0'39.108	0'39.108	230.770	0'35.133	0'35.133	267.991	0'38.447	0'38.447	235.295	0'38.525	0'38.525	235.808	0'34.759	0'34.759	266.667	0'35.361	0'35.361	267.327
17 <sup>a</sup> - 2	1'19.357	0'40.249		1'14.780	0'39.647		1'17.454	0'39.007		1'18.468	0'40.943		1'11.993	0'37.234		1'12.924	0'37.563	
17 <sup>a</sup> - 3	1'59.791</																	

LAP ANALYSIS RACE - 3

On October 03 - 04  
Autodromo di Monza

Number	17			20			29			44			46			52		
	Lap Time	Partial	Speed	Lap Time	Partial	Speed	Lap Time	Partial	Speed	Lap Time	Partial	Speed	Lap Time	Partial	Speed	Lap Time	Partial	Speed
26 <sup>a</sup> - 1	0'38.704	0'38.704	231.760	0'35.176	0'35.176	267.991	0'38.118	0'38.118	233.262	0'38.124	0'38.124	235.295	0'35.018	0'35.018	266.667	0'34.976	0'34.976	267.327
26 <sup>a</sup> - 2	1'18.351	0'39.647		1'13.158	0'37.982		1'16.913	0'38.795		1'17.367	0'39.243		1'12.926	0'37.908		1'12.112	0'37.136	
26 <sup>a</sup> - 3	1'58.530	0'40.179		1'51.386	0'38.228		1'55.978	0'39.065		1'57.969	0'40.602		1'50.919	0'37.993		1'49.652	0'37.540	
27 <sup>a</sup> - 1	0'38.701	0'38.701	231.760	0'35.304	0'35.304	267.991	0'38.710	0'38.710	235.295				0'35.242	0'35.242	267.991	0'35.075	0'35.075	267.327
27 <sup>a</sup> - 2	1'18.156	0'39.455		1'13.349	0'38.045		1'19.812	0'41.102					1'12.950	0'37.708		1'12.320	0'37.245	
27 <sup>a</sup> - 3	1'58.953	0'40.797		1'51.577	0'38.228		1'59.070	0'39.258					1'50.917	0'37.967		1'49.666	0'37.346	
28 <sup>a</sup> - 1	0'39.015	0'39.015	232.759	0'34.965	0'34.965	267.327	0'38.370	0'38.370	232.759				0'35.287	0'35.287	257.143	0'35.307	0'35.307	267.991
28 <sup>a</sup> - 2	1'18.715	0'39.700		1'13.127	0'38.162		1'17.432	0'39.062					1'13.920	0'38.633		1'12.930	0'37.623	
28 <sup>a</sup> - 3	1'58.854	0'40.139		1'51.525	0'38.398		1'56.936	0'39.504					1'51.937	0'38.017		1'50.407	0'37.477	
29 <sup>a</sup> - 1	0'38.936	0'38.936	232.259	0'35.079	0'35.079	266.010	0'38.378	0'38.378	233.262				0'35.155	0'35.155	266.667	0'35.708	0'35.708	268.657
29 <sup>a</sup> - 2	1'18.440	0'39.504		1'13.166	0'38.087		1'17.637	0'39.259					1'12.588	0'37.433		1'13.185	0'37.477	
29 <sup>a</sup> - 3	1'58.643	0'40.203		1'52.038	0'38.872		1'57.288	0'39.651					1'50.440	0'37.852		1'50.906	0'37.721	
30 <sup>a</sup> - 1	0'38.932	0'38.932	231.760	0'35.335	0'35.335	259.616	0'38.583	0'38.583	233.262				0'35.172	0'35.172	267.991	0'35.527	0'35.527	268.657
30 <sup>a</sup> - 2	1'18.433	0'39.501		1'13.230	0'37.895		1'18.361	0'39.778					1'12.622	0'37.450		1'12.834	0'37.307	
30 <sup>a</sup> - 3	1'58.760	0'40.327		2'10.610	0'57.380	PIT	1'57.947	0'39.586					1'50.334	0'37.712		1'50.265	0'37.431	
31 <sup>a</sup> - 1				0'55.725	0'55.725	218.624							0'35.216	0'35.216	258.374	0'35.044	0'35.044	267.327
31 <sup>a</sup> - 2				1'33.778	0'38.053								1'12.729	0'37.513		1'12.368	0'37.324	
31 <sup>a</sup> - 3				2'11.898	0'38.120								1'51.349	0'38.620		1'49.953	0'37.585	
32 <sup>a</sup> - 1				0'35.062	0'35.062	264.706							0'35.829	0'35.829	248.276	0'35.017	0'35.017	267.327
32 <sup>a</sup> - 2				1'13.207	0'38.145								1'13.537	0'37.708		1'12.163	0'37.146	
32 <sup>a</sup> - 3				1'51.624	0'38.417								1'51.703	0'38.166		1'49.570	0'37.407	

Ideal Lap	
0'38.660	0'38.660
1'18.115	0'39.455
1'58.156	0'40.041

Ideal Lap	
0'34.965	0'34.965
1'12.494	0'37.529
1'50.291	0'37.797

Ideal Lap	
0'38.118	0'38.118
1'16.759	0'38.641
1'55.824	0'39.065

Ideal Lap	
0'38.086	0'38.086
1'17.206	0'39.120
1'57.219	0'40.013

Ideal Lap	
0'34.648	0'34.648
1'11.660	0'37.012
1'48.587	0'36.927

Ideal Lap	
0'34.870	0'34.870
1'12.006	0'37.136
1'49.352	0'37.346

Ideal Best Lap	
0'34.412	0'34.412
1'11.256	0'36.844
1'48.120	0'36.864







LAP ANALYSIS RACE - 3

On October 03 - 04  
Autodromo di Monza

Number	62			69			70			74			88		
	Lap Time	Partial	Speed	Lap Time	Partial	Speed	Lap Time	Partial	Speed	Lap Time	Partial	Speed	Lap Time	Partial	Speed
26 <sup>a</sup> - 1	0'38.951	0'38.951	219.513	0'35.338	0'35.338	266.667	0'38.779	0'38.779	230.278	0'34.633	0'34.633	260.870	0'34.856	0'34.856	256.533
26 <sup>a</sup> - 2	1'19.490	0'40.539		1'13.417	0'38.079		1'18.584	0'39.805		1'12.293	0'37.660		1'12.439	0'37.583	
26 <sup>a</sup> - 3	2'17.864	0'58.374	PIT	1'51.715	0'38.298		1'58.702	0'40.118		1'51.254	0'38.961		1'49.451	0'37.012	
27 <sup>a</sup> - 1	0'59.181	0'59.181	192.514	0'35.044	0'35.044	262.136	0'38.846	0'38.846	229.300	0'34.819	0'34.819	261.502	0'34.555	0'34.555	265.357
27 <sup>a</sup> - 2	1'39.963	0'40.782		1'12.865	0'37.821		1'18.653	0'39.807		1'13.038	0'38.219		1'11.783	0'37.228	
27 <sup>a</sup> - 3	2'20.525	0'40.562		1'51.398	0'38.533		1'58.991	0'40.338		1'51.126	0'38.088		1'48.909	0'37.126	
28 <sup>a</sup> - 1	0'38.494	0'38.494	236.324	0'35.360	0'35.360	254.717	0'38.863	0'38.863	229.788	0'34.734	0'34.734	250.581	0'34.448	0'34.448	267.327
28 <sup>a</sup> - 2	1'19.511	0'41.017		1'13.224	0'37.864		1'18.989	0'40.126		1'13.086	0'38.352		1'11.376	0'36.928	
28 <sup>a</sup> - 3	2'00.320	0'40.809		1'51.900	0'38.676		1'59.391	0'40.402		1'51.336	0'38.250		1'48.309	0'36.933	
29 <sup>a</sup> - 1	0'38.601	0'38.601	238.411	0'35.448	0'35.448	248.276	0'38.735	0'38.735	229.300	0'34.412	0'34.412	264.059	0'34.474	0'34.474	267.327
29 <sup>a</sup> - 2	1'18.815	0'40.214		1'13.353	0'37.905		1'18.891	0'40.156		1'11.567	0'37.155		1'11.849	0'37.375	
29 <sup>a</sup> - 3	1'59.817	0'41.002		1'51.761	0'38.408		2'00.002	0'41.111		1'48.708	0'37.141		1'49.269	0'37.420	
30 <sup>a</sup> - 1	0'38.509	0'38.509	237.363	0'35.319	0'35.319	251.749	0'38.976	0'38.976	229.788	0'35.676	0'35.676	235.295	0'34.733	0'34.733	264.059
30 <sup>a</sup> - 2	1'18.803	0'40.294		1'13.698	0'38.379		1'19.386	0'40.410		1'14.358	0'38.682		1'12.073	0'37.340	
30 <sup>a</sup> - 3	1'59.353	0'40.550		1'51.823	0'38.125		2'00.035	0'40.649		1'52.515	0'38.157		1'49.451	0'37.378	
31 <sup>a</sup> - 1				0'35.389	0'35.389	250.000				0'35.191	0'35.191	237.886	0'34.773	0'34.773	259.616
31 <sup>a</sup> - 2				1'13.162	0'37.773					1'13.269	0'38.078		1'12.239	0'37.466	
31 <sup>a</sup> - 3				2'04.527	0'51.365	PIT				1'51.322	0'38.053		1'49.714	0'37.475	
32 <sup>a</sup> - 1													0'34.979	0'34.979	254.118
32 <sup>a</sup> - 2													1'12.826	0'37.847	
32 <sup>a</sup> - 3													1'50.956	0'38.130	

Ideal Lap	
0'38.404	0'38.404
1'18.521	0'40.117
1'59.030	0'40.509

Ideal Lap	
0'35.027	0'35.027
1'12.800	0'37.773
1'50.793	0'37.993

Ideal Lap	
0'38.735	0'38.735
1'18.540	0'39.805
1'58.658	0'40.118

Ideal Lap	
0'34.412	0'34.412
1'11.323	0'36.911
1'48.401	0'37.078

Ideal Lap	
0'34.448	0'34.448
1'11.376	0'36.928
1'48.309	0'36.933

Ideal Best Lap	
0'34.412	0'34.412
1'11.256	0'36.844
1'48.120	0'36.864





**RACE - 3 Sectors Results**

Sector - 1			Sector - 2			Sector - 3			Ideal Lap vs Best Lap				
Ord.	Nº Driver	Time	Nº Driver	Time	Nº Driver	Time	Ord.	Nº Driver	Ideal Lap	Best Lap	Ord.		
1	74 James Abbott	34.412	2 Wells - Littlejohn	36.844	2 Wells - Littlejohn	36.864	1	88 Woodward - Kaiser	1'48.309	1'48.309	1		
2	88 Woodward - Kaiser	34.448	74 James Abbott	36.911	46 Kapadia - Ferguson	36.927	2	74 James Abbott	1'48.401	1'48.708	3		
3	46 Kapadia - Ferguson	34.648	88 Woodward - Kaiser	36.928	88 Woodward - Kaiser	36.933	3	2 Wells - Littlejohn	1'48.579	1'48.684	2		
4	52 Correa - MacClughan	34.870	46 Kapadia - Ferguson	37.012	74 James Abbott	37.078	4	46 Kapadia - Ferguson	1'48.587	1'48.836	4		
5	2 Wells - Littlejohn	34.871	52 Correa - MacClughan	37.136	52 Correa - MacClughan	37.346	5	52 Correa - MacClughan	1'49.352	1'49.570	5		
6	20 Alain Costa	34.965	5 Bartels - Moseley	37.432	5 Bartels - Moseley	37.657	6	20 Alain Costa	1'50.291	1'50.613	6		
7	69 Winslow - Corbett	35.027	20 Alain Costa	37.529	20 Alain Costa	37.797	7	5 Bartels - Moseley	1'50.782	1'50.971	8		
8	5 Bartels - Moseley	35.693	69 Winslow - Corbett	37.773	69 Winslow - Corbett	37.993	8	69 Winslow - Corbett	1'50.793	1'50.900	7		
9	7 Jean Gandar	36.429	7 Jean Gandar	38.598	7 Jean Gandar	38.235	9	7 Jean Gandar	1'53.262	1'53.791	9		
10	44 Shahin Nouri	38.086	29 Marateotto - Cencetti	38.641	29 Marateotto - Cencetti	39.065	10	29 Marateotto - Cencetti	1'55.824	1'55.978	10		
11	29 Marateotto - Cencetti	38.118	6 Cummings - Ellis	38.918	6 Cummings - Ellis	39.576	11	6 Cummings - Ellis	1'57.070	1'57.185	11		
12	14 Roger Bromiley	38.367	44 Shahin Nouri	39.120	3 Ricardo Dona	39.688	12	44 Shahin Nouri	1'57.219	1'57.687	13		
13	62 Mark Crader	38.404	3 Ricardo Dona	39.318	14 Roger Bromiley	39.882	13	3 Ricardo Dona	1'57.418	1'57.668	12		
14	3 Ricardo Dona	38.412	17 Jani Hjerppe	39.455	44 Shahin Nouri	40.013	14	14 Roger Bromiley	1'57.848	1'58.114	14		
15	6 Cummings - Ellis	38.576	14 Roger Bromiley	39.599	17 Jani Hjerppe	40.041	15	17 Jani Hjerppe	1'58.156	1'58.406	15		
16	17 Jani Hjerppe	38.660	70 Koller - Navratil	39.805	70 Koller - Navratil	40.118	16	70 Koller - Navratil	1'58.658	1'58.702	16		
17	70 Koller - Navratil	38.735	62 Mark Crader	40.117	62 Mark Crader	40.509	17	62 Mark Crader	1'59.030	1'59.353	17		



Autodromo di Monza

On October 03 - 04

## RACE - 3 MAXIMUM SPEED

Ord.	Nº	Entrant	Driver	Nat.	Driver_2	Nat.	Car Type	Cat.	Cla.	Km/h
1	74	Works	James Abbott	UK			Spyder	I	1º	272.041
2	2	Nielsen Racing	Tony Wells	UK	James Littlejohn	UK	SR8	M	1º	270.000
3	20	Radical France	Alain Costa	Monaco			SR8	MF	1º	268.657
4	46	360 Racing	Alex Kapadia	UK	Jeremy Ferguson		SR8	M	2º	268.657
5	52	Nielsen Racing	Victor Correa	BR	Paddy MacClughan		SR8	M	3º	268.657
6	88	360 Racing	Terrence Woodward	UK	Ross Kaiser	UK	SR8	M	4º	268.657
7	69	Jack White Racing	James Winslow	Australia	John Corbett		SR8	M	5º	266.667
8	5	Nielsen Racing	Jaap Bartels	NL	Stuart Moseley		Spyder	M	6º	260.241
9	7	Radical France	Jean Gandar	BR			Spyder	MF	2º	258.374
10	62	Works	Mark Crader	UK			SR3 RSX	SF	1º	238.939
11	14	Works	Roger Bromiley	UK			SR3 RSX	S	1º	236.843
12	44	Works	Shahin Nouri	CH			SR3 RSX	S	2º	236.843
13	29	RAW	Marcello Marateotto	IT	Marco Cencetti	IT	SR3 RSX	S	3º	235.295
14	17	Rockmotorsport	Jani Hjerppe	FI			SR3 RSX	S	4º	233.767
15	3	Nielsen Racing	Ricardo Dona	IT			SR3 RSX	SF	2º	230.770
16	6	Supreme	Andy Cummings	UK	Bradley Ellis	UK	SR3	S	5º	230.278
17	70	Privateer	Josef Koller	CZ	Ondrej Navratil	CZ	SR3 RSX	S	6º	230.278



Santisima Trinidad 30 28010 MADRID

Tel y Fax 91.448.32.06

www.cronococa.com

e-mail: info@cronococa.com



Juan Bravo 17 28006 MADRID

Tel 91.432.27.50

www.gtsport.es

e-mail: info@gtsport.es

LAP CHART RACE - 3

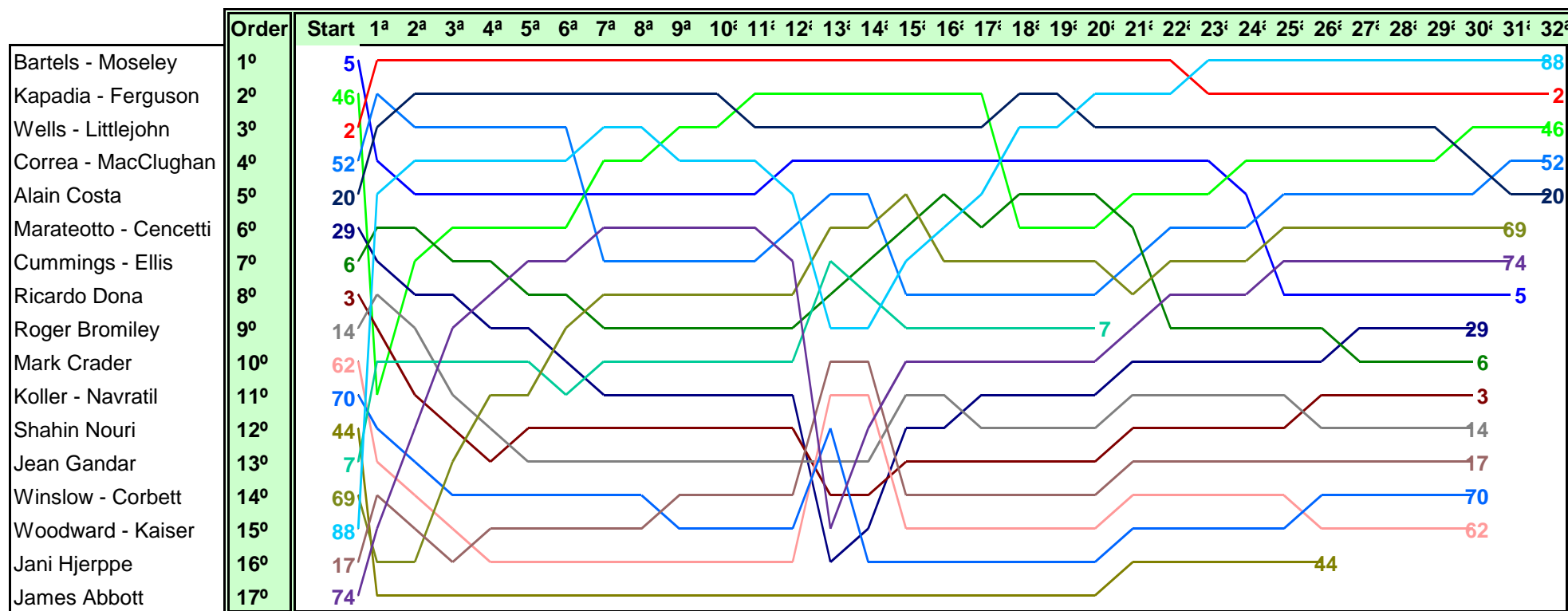
Order	Start	GAP / LT	1 <sup>a</sup>	GAP / LT	2 <sup>a</sup>	GAP / LT	3 <sup>a</sup>	GAP / LT	4 <sup>a</sup>	GAP / LT	5 <sup>a</sup>	GAP / LT	6 <sup>a</sup>	GAP / LT	7 <sup>a</sup>	GAP / LT	8 <sup>a</sup>	GAP / LT	9 <sup>a</sup>	GAP / LT	10 <sup>a</sup>	GAP / LT	11 <sup>a</sup>	GAP / LT	12 <sup>a</sup>	GAP / LT	13 <sup>a</sup>	GAP / LT	14 <sup>a</sup>	GAP / LT	15 <sup>a</sup>	GAP / LT	16 <sup>a</sup>	GAP / LT		
1 <sup>o</sup>	5		2	1'53.252	2	1'50.083	2	1'49.709	2	1'49.232	2	1'49.131	2	1'49.715	2	1'49.465	2	1'49.662	2	1'49.648	2	1'49.981	2	1'49.838	2	1'49.342	2	1'49.11	2	1'50.065	2	1'49.074				
2 <sup>o</sup>	46	1'04'20.40	52	3'508 1'56.76	20	8.034 1'52.815	20	8.639 1'51.43	20	10.222 1'51.42	20	12.480 1'51.389	20	14.697 1'51.932	20	16.576 1'51.344	20	18.298 1'51.384	20	19.463 1'50.813	20	21.003 1'51.521	46	21.015 1'49.738	46	23.033 1'51.358	46	22.641 1'48.95	46	22.941 1'49.41	46	22.182 1'49.306	46	22.429 1'49.321		
3 <sup>o</sup>	2	1'04'20.23	20	3'581 1'56.833	52	6.639 1'53.214	52	8.603 1'51.673	52	10.570 1'51.199	52	12.799 1'51.36	52	15.106 1'52.022	88	17.683 1'51.739	88	19.496 1'51.475	46	19.826 1'49.672	46	21.115 1'51.27	20	22.744 1'51.579	20	25.129 1'51.725	20	28.826 1'51.039	20	28.546 1'50.83	20	29.094 1'50.613	20	31.202 1'51.182		
4 <sup>o</sup>	52	1'04'20.26	5	4.871 1'58.123	88	7.584 1'52.499	88	9.391 1'51.516	88	11.529 1'51.37	88	13.438 1'51.04	88	15.409 1'51.686	46	18.482 1'50.665	46	19.802 1'49.982	88	21.647 1'51.799	88	22.476 1'50.81	88	23.591 1'50.953	5	27.410 1'51.526	5	29.717 1'51.649	5	32.515 1'51.908	5	34.343 1'51.893	5	37.418 1'52.149		
5 <sup>o</sup>	20	1'04'20.26	88	5.168 1'58.42	5	8.228 1'53.44	5	10.579 1'52.06	5	13.126 1'51.779	5	15.158 1'51.163	5	16.501 1'51.058	5	19.814 1'52.778	5	21.285 1'51.133	5	22.608 1'50.971	5	23.606 1'50.979	5	25.224 1'51.456	88	31.557 1'57.306	52	53.739 1'51.5	52	1'03.207 1'58.578	69	1'28.325 1'59.192	6	1 vta. 1'57.687		
6 <sup>o</sup>	29	1'04'20.67	6	9.178 2'02.43	6	16.863 1'57.768	46	19.332 1'50.335	46	19.237 1'49.137	46	19.161 1'49.055	46	18.282 1'48.836	74	37.781 1'52.085	74	39.875 1'51.756	74	40.659 1'50.432	74	41.435 1'50.757	74	44.373 1'52.776	52	51.581 1'51.424	69	1'15.951 1'52.227	69	1'19.198 1'52.357	6	1 vta. 1'57.333	88	1 vta. 1'48.878		
7 <sup>o</sup>	6	1'04'21.46	29	10.784 2'04.036	46	18.706 1'51.826	6	24.979 1'57.825	6	33.107 1'57.36	74	35.909 1'49.775	74	35.161 1'48.967	52	40.531 2'14.89	52	43.200 1'52.331	52	46.287 1'52.735	52	47.700 1'51.394	52	49.497 1'51.635	74	55.283 2'00.25	7	1'45.535 1'56.8	6	1 vta. 1'58.086	88	1 vta. 1'50.815	69	1 vta. 3'17.231		
8 <sup>o</sup>	3	1'04'21.46	14	13.000 2'06.252	29	20.214 1'59.513	29	29.756 1'59.251	74	35.265 1'52.715	6	41.400 1'57.424	6	49.584 1'57.899	69	57.267 1'52.306	69	1'00.357 1'52.752	69	1'03.555 1'52.846	69	1'06.942 1'53.368	69	1'10.023 1'52.919	69	1'13.066 1'52.383	6	1'45.562 1'57.994	7	1 vta. 2'03.161	52	1 vta. 3'48.967	52	1 vta. 1'51.197		
9 <sup>o</sup>	14	1'04'21.46	3	13.567 2'06.819	14	24.321 2'01.404	74	31.782 1'52.015	29	39.508 1'58.984	29	49.467 1'59.09	69	54.426 1'52.953	6	58.293 1'58.174	6	1'06.341 1'57.71	6	1'14.066 1'57.373	6	1'21.270 1'57.185	6	1'28.865 1'57.433	6	1'36.910 1'57.385	88	1 vta. 3'29.265	88	1 vta. 1'49.705	7	1 vta. 3'06.803	7	1 vta. 1'54.768		
10 <sup>o</sup>	62	1'04'21.46	7	15.744 2'08.996	7	24.979 1'59.318	7	33.164 1'57.894	7	43.320 1'59.388	7	51.132 1'56.943	29	58.468 1'58.716	7	1'06.311 1'57.088	7	1'13.370 1'56.721	7	1'19.364 1'55.642	7	1'25.964 1'56.581	7	1'31.555 1'55.429	7	1'38.077 1'55.862	17	1 vta. 1'59.331	17	1 vta. 2'05.472	74	1 vta. 1'50.436	74	1 vta. 1'49.199		
11 <sup>o</sup>	70	1'04'21.46	46	16.963 2'10.215	3	25.935 2'02.451	14	35.549 2'00.937	69	46.714 1'54.467	69	51.188 1'53.605	7	58.688 1'57.271	29	1'08.124 1'59.121	29	1'17.484 1'59.022	29	1'26.699 1'58.863	29	1'35.627 1'58.909	29	1'43.998 1'58.209	29	1 vta. 2'04.906	62	1 vta. 2'01.356	62	1 vta. 2'09.707	14	2 vta. 1'59.313	14	2 vta. 1'58.332		
12 <sup>o</sup>	44	38'12.751- 46	70	17.940 2'11.192	74	29.476 1'50.793	3	36.192 1'59.966	14	46.937 2'00.62	3	58.629 2'00.375	3	1'08.738 1'59.824	3	1'18.593 1'59.32	3	1'27.867 1'58.936	3	1'37.406 1'59.187	3	1'46.279 1'58.854	3	1 vta. 1'58.523	3	1 vta. 2'06.692	70	1 vta. 2'06.171	74	2 vta. 1'49.595	29	2 vta. 1'59.694	29	2 vta. 1'57.528		
13 <sup>o</sup>	7	04'36.925- 25	62	19.230 2'12.482	70	30.254 2'02.397	69	41.479 1'55.481	3	47.385 2'00.425	14	58.830 2'01.024	14	1'12.247 2'03.132	14	1'22.672 1'59.69	14	1'33.384 2'00.374	14	1'44.710 2'00.974	14	1 vta. 2'00.115	14	1 vta. 1'59.385	14	1 vta. 2'05.903	14	2 vta. 3'22.739	14	2 vta. 1'59.782	3	2 vta. 2'00.475	3	2 vta. 1'58.512		
14 <sup>o</sup>	69	00'00.000-	17	19.670 2'12.922	62	32.080 2'02.933	70	42.849 2'02.304	70	54.967 2'01.35	70	1'07.328 2'01.492	70	1'18.825 2'01.212	70	1'30.790 2'01.43	70	1'42.996 2'01.868	17	1 vta. 2'00.67	17	1 vta. 1'59.758	17	1 vta. 2'00.119	17	1 vta. 1'59.486	3	2 vta. 3'31.752	3	2 vta. 1'59.819	17	2 vta. 3'17.19	17	2 vta. 2'00.727		
15 <sup>o</sup>	88	00'00.000-	74	28.766 2'22.018	17	33.736 2'04.149	62	44.927 2'02.556	17	57.455 2'01.109	17	1'08.877 2'00.553	17	1'19.326 2'00.164	17	1'30.942 2'01.081	17	1'43.386 2'02.106	70	1 vta. 2'01.417	70	1 vta. 2'01.226	70	1 vta. 2'02.162	70	1 vta. 2'00.022	74	2 vta. 4'49.463	29	2 vta. 1'57.854	62	2 vta. 3'06.121	62	2 vta. 2'00.878		
16 <sup>o</sup>	17	00'00.000-	69	28.874 2'22.126	69	35.707 1'56.916	17	45.578 2'01.551	62	57.661 2'01.966	62	1'10.329 2'01.799	62	1'21.456 2'00.842	62	1'32.645 2'00.654	62	1'44.160 2'01.177	62	1 vta. 2'01.033	62	1 vta. 2'00.925	62	1 vta. 2'02.538	62	1 vta. 2'00.677	29	2 vta. 3'46.611	70	2 vta. 3'17.188	70	2 vta. 2'01.015	70	2 vta. 2'00.727		
17 <sup>o</sup>	74	00'00.000-	44	5 vta. >10 min	44	5 vta. 2'04.005	44	5 vta. 2'01.431	44	5 vta. 1'59.874	44	5 vta. 1'59.372	44	5 vta. 1'59.286	44	5 vta. 1'58.891	44	5 vta. 1'58.854	44	5 vta. 1'58.528	44	5 vta. 2'04.694	44	5 vta. 3'18.398	44	5 vta. 1'57.9	44	6 vta. 1'58.789	44	7 vta. 1'58.54	44	7 vta. 1'58.059	44	6 vta. 1'58.817		

LAP CHART RACE - 3

Autodromo di Monza  
On October 03 - 04

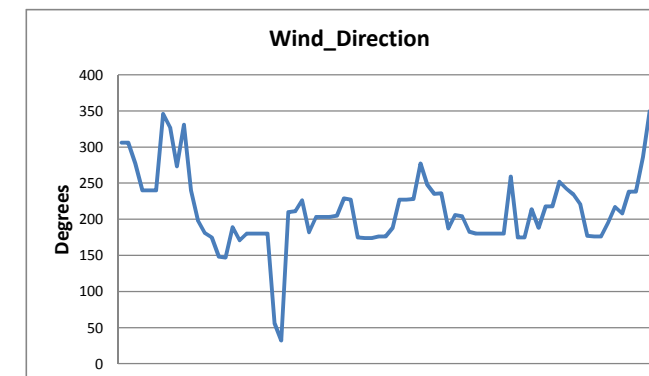
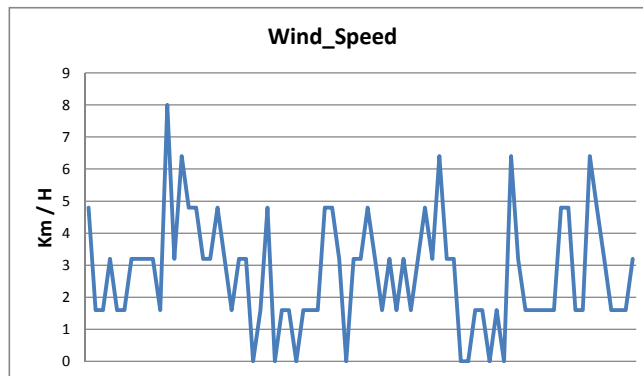
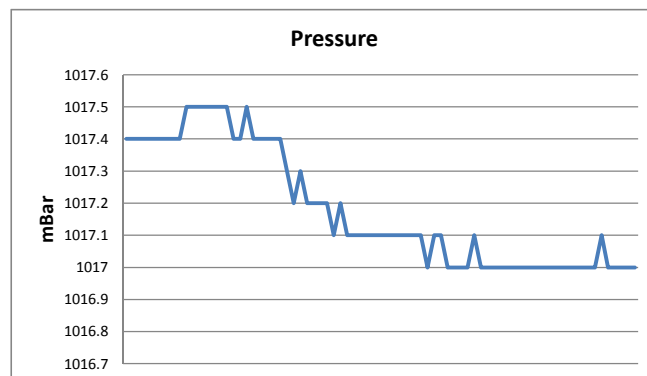
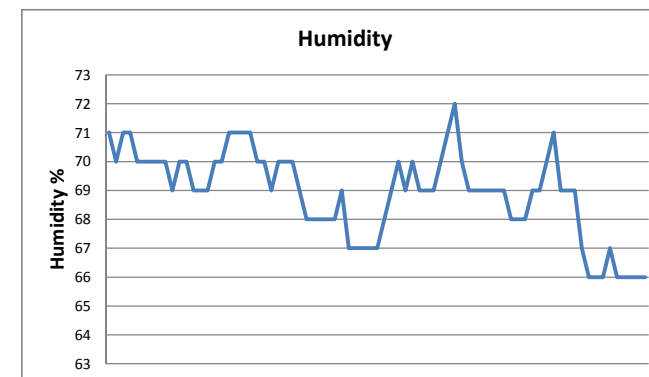
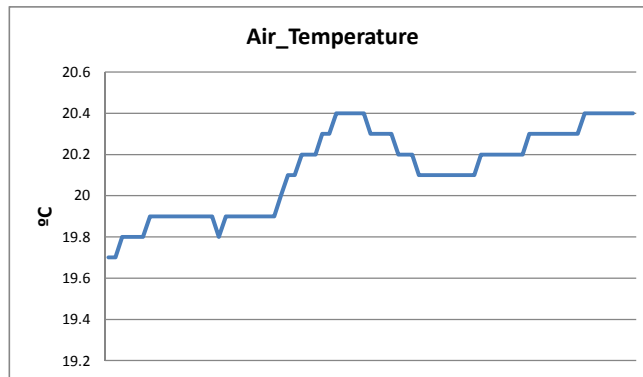
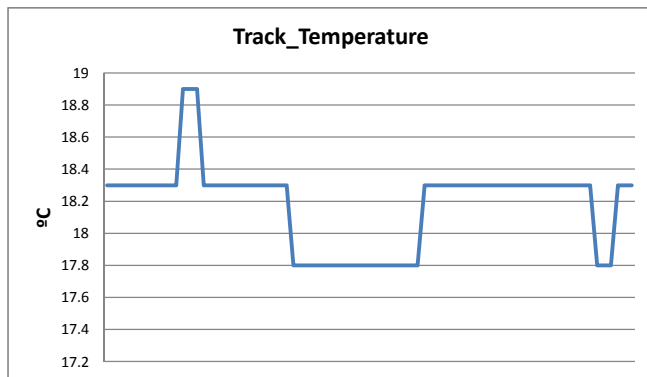
Order	17 <sup>a</sup>	18 <sup>a</sup>	19 <sup>a</sup>	20 <sup>a</sup>	21 <sup>a</sup>	22 <sup>a</sup>	23 <sup>a</sup>	24 <sup>a</sup>	25 <sup>a</sup>	26 <sup>a</sup>	27 <sup>a</sup>	28 <sup>a</sup>	29 <sup>a</sup>	30 <sup>a</sup>	31 <sup>a</sup>	32 <sup>a</sup>																
	GAP / LT	GAP / LT	GAP / LT	GAP / LT	GAP / LT	GAP / LT	GAP / LT	GAP / LT	GAP / LT	GAP / LT	GAP / LT	GAP / LT	GAP / LT	GAP / LT	GAP / LT	GAP / LT																
1 <sup>o</sup>	<b>2</b>	1'49.039	<b>2</b>	1'48.72	<b>2</b>	1'48.753	<b>2</b>	1'48.684	<b>2</b>	1'49.448	<b>2</b>	1'56.54	<b>88</b>	1'49.062	<b>88</b>	1'49.105	<b>88</b>	1'49.619	<b>88</b>	1'49.451	<b>88</b>	1'48.909	<b>88</b>	1'48.309	<b>88</b>	1'49.269	<b>88</b>	1'49.451	<b>88</b>	1'49.714	<b>88</b>	1'50.956
2 <sup>o</sup>	<b>46</b>	29.324 1'55.934	<b>20</b>	39.136 1'52.615	<b>20</b>	49.188 1'58.805	<b>88</b>	1 via. 1'48.704	<b>88</b>	1 via. 1'48.556	<b>88</b>	2'04.261 1'48.741	<b>2</b>	10.188 4'03.511	<b>2</b>	14.045 1'52.962	<b>2</b>	16.021 1'51.595	<b>2</b>	17.966 1'51.396	<b>2</b>	20.970 1'51.913	<b>2</b>	24.189 1'51.528	<b>2</b>	26.711 1'51.791	<b>2</b>	28.673 1'51.413	<b>2</b>	31.177 1'52.218	<b>2</b>	31.736 1'51.515
3 <sup>o</sup>	<b>20</b>	35.241 1'53.078	<b>88</b>	1 via. 1'48.737	<b>88</b>	1 via. 1'48.968	<b>20</b>	1 via. 3'26.933	<b>20</b>	1 via. 1'51.778	<b>20</b>	2'24.939 1'51.712	<b>20</b>	23.133 1'51.517	<b>20</b>	25.540 1'51.512	<b>20</b>	29.652 1'53.731	<b>20</b>	31.587 1'51.386	<b>20</b>	34.255 1'51.577	<b>20</b>	37.471 1'51.525	<b>20</b>	40.240 1'52.038	<b>46</b>	59.548 1'50.334	<b>46</b>	1'01.183 1'51.349	<b>46</b>	1'01.930 1'51.703
4 <sup>o</sup>	<b>5</b>	48.238 1'59.859	<b>5</b>	1 via. 3'26.815	<b>5</b>	1 via. 1'54.002	<b>5</b>	1 via. 1'53.787	<b>5</b>	1 via. 1'54.198	<b>5</b>	2'39.300 1'54.405	<b>5</b>	41.015 1'55.038	<b>46</b>	48.956 1'52.537	<b>46</b>	50.390 1'51.053	<b>46</b>	51.858 1'50.919	<b>46</b>	53.866 1'50.917	<b>46</b>	57.494 1'51.937	<b>46</b>	58.665 1'50.44	<b>20</b>	1'01.399 2'10.61	<b>52</b>	1'10.894 1'49.53	<b>52</b>	1'09.508 1'51.624
5 <sup>o</sup>	<b>88</b>	1 via. 1'49.11	<b>6</b>	1 via. 1'58.343	<b>6</b>	1 via. 1'57.587	<b>6</b>	1 via. 1'57.588	<b>46</b>	1 via. 1'51.448	<b>46</b>	2'47.590 1'51.135	<b>46</b>	45.524 1'51.257	<b>5</b>	54.054 2'02.144	<b>52</b>	1'05.148 1'50.028	<b>52</b>	1'05.349 1'49.652	<b>52</b>	1'06.106 1'49.666	<b>52</b>	1'08.204 1'50.407	<b>52</b>	1'09.841 1'50.906	<b>52</b>	1'10.655 1'50.265	<b>20</b>	1'23.583 2'11.898	<b>20</b>	1'24.251 1'51.624
6 <sup>o</sup>	<b>6</b>	1 via. 1'57.567	<b>46</b>	1 via. 4'03.371	<b>46</b>	1 via. 1'52.363	<b>46</b>	1 via. 1'52.094	<b>6</b>	1 via. 2'03.764	<b>52</b>	3'07.387 1'50.365	<b>52</b>	1'03.953 1'49.889	<b>52</b>	1'04.739 1'49.891	<b>69</b>	1'14.717 1'53.013	<b>69</b>	1'16.981 1'51.715	<b>69</b>	1'19.470 1'51.398	<b>69</b>	1'23.061 1'51.9	<b>69</b>	1'25.553 1'51.761	<b>69</b>	1'27.925 1'51.823	<b>69</b>	1'42.738 2'04.527		
7 <sup>o</sup>	<b>69</b>	1 via. 1'52.462	<b>69</b>	1 via. 1'51.847	<b>69</b>	1 via. 1'51.6	<b>69</b>	1 via. 1'53.785	<b>52</b>	1 via. 1'51.448	<b>69</b>	3'10.469 1'53.025	<b>69</b>	1'09.528 1'52.382	<b>69</b>	1'11.323 1'50.9	<b>74</b>	1 via. 1'52.627	<b>74</b>	1 via. 1'51.254	<b>74</b>	1 via. 1'51.126	<b>74</b>	1 via. 1'51.336	<b>74</b>	1 via. 1'48.708	<b>74</b>	1 via. 1'52.515	<b>74</b>	1 via. 1'51.322		
8 <sup>o</sup>	<b>52</b>	1 via. 1'50.595	<b>52</b>	1 via. 1'50.757	<b>52</b>	1 via. 1'50.135	<b>52</b>	1 via. 1'51.039	<b>69</b>	1 via. 1'52.452	<b>74</b>	1 via. 1'50.565	<b>74</b>	1 via. 1'48.904	<b>74</b>	1 via. 1'53.558	<b>5</b>	1 via. 3'13.88	<b>5</b>	1 via. 1'53.995	<b>5</b>	1 via. 1'53.554	<b>5</b>	1 via. 1'53.247	<b>5</b>	1 via. 1'52.855	<b>5</b>	1 via. 1'56.581	<b>5</b>	1 via. 1'57.058		
9 <sup>o</sup>	<b>7</b>	1 via. 1'54.284	<b>7</b>	1 via. 1'54.303	<b>7</b>	2 via. 1'55.205	<b>7</b>	1 via. 1'53.791	<b>74</b>	1 via. 1'51.85	<b>6</b>	1 via. 3'36.717	<b>6</b>	1 via. 2'02.848	<b>6</b>	1 via. 2'01.313	<b>6</b>	1 via. 2'01.299	<b>6</b>	1 via. 2'01.215	<b>29</b>	1 via. 1'59.07	<b>29</b>	2 via. 1'56.936	<b>29</b>	2 via. 1'57.288	<b>29</b>	2 via. 1'57.947				
10 <sup>o</sup>	<b>74</b>	2 via. 1'49.25	<b>74</b>	2 via. 1'48.768	<b>74</b>	2 via. 1'49.05	<b>74</b>	2 via. 1'49.341	<b>29</b>	2 via. 1'56.534	<b>29</b>	1 via. 1'56.924	<b>29</b>	2 via. 1'56.165	<b>29</b>	2 via. 1'56.318	<b>29</b>	1 via. 1'56.129	<b>29</b>	2 via. 1'55.978	<b>6</b>	2 via. 2'02.038	<b>6</b>	2 via. 2'01.304	<b>6</b>	2 via. 2'01.759	<b>6</b>	2 via. 2'01.979				
11 <sup>o</sup>	<b>29</b>	2 via. 1'56.678	<b>29</b>	2 via. 1'58.174	<b>29</b>	2 via. 1'56.511	<b>29</b>	2 via. 1'56.183	<b>14</b>	2 via. 1'59.094	<b>14</b>	1 via. 1'58.692	<b>14</b>	2 via. 1'58.524	<b>14</b>	2 via. 1'59.056	<b>14</b>	1 via. 1'58.455	<b>3</b>	2 via. 1'58.331	<b>3</b>	2 via. 1'57.988	<b>3</b>	2 via. 1'57.668	<b>3</b>	2 via. 1'58.454	<b>3</b>	2 via. 1'58.453				
12 <sup>o</sup>	<b>14</b>	2 via. 1'58.753	<b>14</b>	2 via. 1'58.114	<b>14</b>	2 via. 1'58.587	<b>14</b>	2 via. 1'58.399	<b>3</b>	2 via. 1'58.723	<b>3</b>	1 via. 1'58.146	<b>3</b>	1 via. 1'58.118	<b>3</b>	1 via. 1'58.601	<b>3</b>	1 via. 1'58.181	<b>14</b>	2 via. 2'00.276	<b>14</b>	2 via. 1'58.699	<b>14</b>	2 via. 1'58.373	<b>14</b>	2 via. 2'00.251	<b>14</b>	2 via. 2'05.789				
13 <sup>o</sup>	<b>3</b>	2 via. 1'59.048	<b>3</b>	2 via. 1'58.508	<b>3</b>	2 via. 1'57.95	<b>3</b>	2 via. 1'58.837	<b>17</b>	1 via. 1'59.21	<b>17</b>	1 via. 1'58.78	<b>17</b>	1 via. 1'58.406	<b>17</b>	2 via. 1'59.133	<b>17</b>	2 via. 1'58.675	<b>17</b>	2 via. 1'58.53	<b>17</b>	2 via. 1'58.953	<b>17</b>	2 via. 1'58.854	<b>17</b>	2 via. 1'58.643	<b>17</b>	2 via. 1'58.76				
14 <sup>o</sup>	<b>17</b>	2 via. 1'59.791	<b>17</b>	2 via. 1'59.1	<b>17</b>	2 via. 1'59.804	<b>17</b>	2 via. 1'58.599	<b>62</b>	1 via. 1'59.419	<b>62</b>	1 via. 2'00.62	<b>62</b>	1 via. 2'00.49	<b>62</b>	2 via. 2'00.331	<b>62</b>	2 via. 1'59.553	<b>70</b>	2 via. 1'58.702	<b>70</b>	2 via. 1'58.991	<b>70</b>	2 via. 1'59.391	<b>70</b>	2 via. 2'00.002	<b>70</b>	2 via. 2'00.035				
15 <sup>o</sup>	<b>62</b>	2 via. 2'00.02	<b>62</b>	2 via. 1'59.469	<b>62</b>	2 via. 2'01.224	<b>62</b>	2 via. 1'59.489	<b>70</b>	1 via. 1'59.869	<b>70</b>	1 via. 1'59.372	<b>70</b>	2 via. 1'59.15	<b>70</b>	2 via. 1'59.093	<b>70</b>	2 via. 1'59.103	<b>62</b>	2 via. 2'17.864	<b>62</b>	2 via. 2'20.525	<b>62</b>	2 via. 2'00.32	<b>62</b>	2 via. 1'59.817	<b>62</b>	2 via. 1'59.353				
16 <sup>o</sup>	<b>70</b>	2 via. 2'00.158	<b>70</b>	2 via. 2'00.682	<b>70</b>	2 via. 2'00.06	<b>70</b>	2 via. 1'59.517	<b>44</b>	6 via. 1'57.732	<b>44</b>	6 via. 1'58.162	<b>44</b>	6 via. 1'57.687	<b>44</b>	6 via. 1'58.108	<b>44</b>	6 via. 1'58.66	<b>44</b>	6 via. 1'57.969												
17 <sup>o</sup>	<b>44</b>	6 via. 1'59.704	<b>44</b>	6 via. 1'58.292	<b>44</b>	6 via. 2'00.55	<b>44</b>	6 via. 1'58.027																								

### RACE - 3 GRAPHIC LAP CHART



**WEATHER REPORT RACE - 3**

Track Status **DRY**





**3th RACE FINAL CLASSIFICATION**

Clas.	Nº	Entrant	Driver	Nat.	Driver 2	Nat.	Car Type	Cat.	Clas.	Laps	Total Time	Km/h.	Gap	Best	Time	Km/h.
1	88	360 Racing	<u>Terrence Woodward</u>	UK	Ross Kaiser	UK	SR8	M	1º	32	1.00'35.937	183.544		28	1'48.309	192.550
2	2	Nielsen Racing	Tony Wells	UK	<u>James Littlejohn</u>	UK	SR8	M	2º	32	1.01'07.673	181.956	31"736	20	1'48.684	191.885
3	46	360 Racing	<u>Alex Kapadia</u>	UK	Jeremy Ferguson		SR8	M	3º	32	1.01'37.867	180.470	1'01"930	6	1'48.836	191.617
4	52	Nielsen Racing	Victor Correa	BR	<u>Paddy MacClughan</u>		SR8	M	4º	32	1.01'45.445	180.101	1'09"508	32	1'49.570	190.334
5	20	Radical France	<u>Alain Costa</u>	Monaco			SR8	MF	1º	32	1.02'00.188	179.388	1'24"251	15	1'50.613	188.539
6	69	Jack White Racing	James Winslow	Australia	<u>John Corbett</u>		SR8	M	5º	31	1.00'27.719	178.211	1 Lap.	24	1'50.900	188.051
7	74	Works	<u>James Abbott</u>	UK			Spyder	I	1º	31	1.00'53.206	176.968	1 Lap.	29	1'48.708	191.843
8	5	Nielsen Racing	Jaap Bartels	NL	<u>Stuart Moseley</u>		Spyder	M	6º	31	1.01'35.483	174.943	1 Lap.	9	1'50.971	187.931
9	29	RAW	<u>Marcello Marateotto</u>	IT	Marco Cencetti	IT	SR3 RSX	S	1º	30	1.00'57.142	171.075	2 Lap.	26	1'55.978	179.817
10	6	Supreme	Andy Cummings	UK	<u>Bradley Ellis</u>	UK	SR3	S	2º	30	1.01'12.387	170.365	2 Lap.	10	1'57.185	177.965
11	3	Nielsen Racing	<u>Ricardo Dona</u>	IT			SR3 RSX	SF	1º	30	1.01'18.936	170.062	2 Lap.	28	1'57.668	177.235
12	14	Works	<u>Roger Bromiley</u>	UK			SR3 RSX	S	3º	30	1.01'31.238	169.495	2 Lap.	18	1'58.114	176.566
13	17	Rockmotorsport	<u>Jani Hierppe</u>	FI			SR3 RSX	S	4º	30	1.01'31.606	169.478	2 Lap.	23	1'58.406	176.130
14	70	Privateer	<u>Josef Koller</u>	CZ	Ondrej Navratil	CZ	SR3 RSX	S	5º	30	1.01'47.298	168.761	2 Lap.	26	1'58.702	175.691
15	62	Works	<u>Mark Crader</u>	UK			SR3 RSX	SF	2º	30	1.02'26.138	167.011	2 Lap.	30	1'59.353	174.733
		<b>NOT CLASSIFIED</b>														
16	44	Works	<u>Shahin Nouri</u>	CH			SR3 RSX	S	6º	26	1.02'09.434	145.391	6 Lap.	23	1'57.687	177.206
17	7	Radical France	<u>Jean Gandar</u>	BR			Spyder	MF	2º	20	40'16.248	172.622	12 Lap.	20	1'53.791	183.273

**Fastest lap Woodward - Kaiser 1'48.309 192.550 Km/h.**

Autodromo di Monza on October 04, 2015

At 17:07

**STEWARDS**

**TIMEKEEPER**