



Autodromo di Monza

On October 03 - 04

### Free practice RESULTS

Ord.	Nº	Team	Driver	Vehicle	Laps	Best	Time	Gap	Interval	Km/h
1	1	Stilo corse	Marco Visconti	Reggiani	13	12	2'27.849			141.055
2	6	Diesse corse	Riccardo Calegari	Silva	12	11	2'29.029	1"180	1"180	139.938
3	99	Sarchio racing	Paolo Coppi	Reggiani	11	9	2'29.645	1"796	0"616	139.362
4	5	Stilo corse	Paolo Collivadino	Reggiani	6	6	2'31.780	3"931	2"135	137.402
5	25	Team Covir	Arduino Giretti	Covir	10	8	2'33.317	5"468	1"537	136.024
6	13	Diesse corse	Luca Marietti	Silva	11	10	2'34.670	6"821	1"353	134.834
7	18	Zemire's racing	Giuliano Zecchetti	Reggiani	10	2	2'35.428	7"579	0"758	134.177
8	15	BMG corse	Giorgio Berto	Reggiani	10	9	2'40.106	12"257	4"678	130.256
9	7	Sarchio racing	Luca Maccanti	Reggiani	11	11	2'44.599	16"750	4"493	126.701
10	9	Team Covir	Isacco Co	Covir	2	2	3'03.308	35"459	18"709	113.769
11	34	Riponi corse	Maurizio Riponi	Dywa-Riponi	9	7	3'10.675	42"826	7"367	109.374
12	95	Riponi corse	Luca Riponi	Dywa-Riponi	2	2	4'33.313	2'05"464	1'22"638	76.304

Autodromo di Monza on October 02, 2015

At 18:06

**RACE DIRECTOR**

**TIMEKEEPER**



Santisima Trinidad 30 28010 MADRID  
Tel y Fax 91.448.32.06  
www.cronococa.com  
e-mail: info@cronococa.com



Juan Bravo 17 28006 MADRID  
Tel 91.432.27.50  
www.gtssport.es  
e-mail: info@gtssport.es

LAP ANALYSIS Free practice

On October 03 - 04  
Autodromo di Monza

Number	1			5			6			7			9			13		
	Lap Time	Partial	Speed	Lap Time	Partial	Speed	Lap Time	Partial	Speed	Lap Time	Partial	Speed	Lap Time	Partial	Speed	Lap Time	Partial	Speed
1 <sup>a</sup> - 1	0'49.530	0'49.530	164.886	0'48.738	<u>0'48.738</u>	184.616	0'50.742	0'50.742	157.435	0'54.049	0'54.049	142.106	0'55.633	<u>0'55.633</u>	132.679	0'57.431	0'57.431	142.106
1 <sup>a</sup> - 2	1'39.870	0'50.340		1'41.119	0'52.381		1'42.109	0'51.367		1'51.364	0'57.315		1'52.781	<u>0'57.148</u>		1'58.141	1'00.710	
1 <sup>a</sup> - 3	2'31.940	0'52.070		2'33.213	0'52.094		2'35.721	0'53.612		2'47.275	<u>0'55.911</u>		3'03.308	1'10.527	PIT	2'58.785	1'00.644	
2 <sup>a</sup> - 1	0'49.399	0'49.399	180.000	0'49.470	0'49.470	169.279	0'54.024	0'54.024	157.435	0'51.755	<u>0'51.755</u>	179.105				0'58.491	0'58.491	124.281
2 <sup>a</sup> - 2	1'39.678	0'50.279		1'41.817	0'52.347		1'46.436	0'52.412		2'16.276	1'24.521					1'56.665	0'58.174	
2 <sup>a</sup> - 3	2'40.308	1'00.630	PIT	2'34.536	0'52.719		2'50.450	1'04.014	PIT	3'14.385	0'58.109					2'56.764	1'00.099	
3 <sup>a</sup> - 1	1'35.736	1'35.736	151.686	0'50.144	0'50.144	174.194	2'54.670	2'54.670	138.285	0'58.762	0'58.762	139.355				0'58.685	0'58.685	141.919
3 <sup>a</sup> - 2	2'27.376	0'51.640		1'41.474	0'51.330		3'46.683	0'52.013		1'55.515	0'56.753					1'54.818	0'56.133	
3 <sup>a</sup> - 3	3'19.150	0'51.774		2'34.753	0'53.279		4'42.184	0'55.501		2'52.577	0'57.062					2'52.223	0'57.405	
4 <sup>a</sup> - 1	0'50.175	0'50.175	172.801	0'50.267	0'50.267	163.637	0'51.918	0'51.918	158.824	0'54.088	0'54.088	146.939				0'53.626	0'53.626	137.056
4 <sup>a</sup> - 2	1'39.854	0'49.679		1'40.503	<u>0'50.236</u>		1'43.748	0'51.830		1'49.721	0'55.633					1'48.102	0'54.474	
4 <sup>a</sup> - 3	2'31.147	0'51.293		2'32.180	0'51.677		2'38.103	0'54.355		2'46.320	0'56.599					2'44.496	0'56.394	
5 <sup>a</sup> - 1	0'50.478	0'50.478	167.963	0'49.168	0'49.168	178.218	0'50.989	0'50.989	172.249	0'54.390	0'54.390	155.620				0'53.977	0'53.977	151.686
5 <sup>a</sup> - 2	1'41.384	0'50.906		1'40.340	0'51.172		1'43.065	0'52.076		1'50.424	0'56.034					1'48.243	0'54.266	
5 <sup>a</sup> - 3	2'32.961	0'51.577		<u>2'31.780</u>	<u>0'51.440</u>		2'36.279	0'53.214		2'48.843	0'58.419					2'55.596	1'07.353	PIT
6 <sup>a</sup> - 1	0'50.162	0'50.162	169.812	0'59.266	0'59.266	179.105	0'49.521	0'49.521	173.914	0'53.746	0'53.746	158.591				3'25.194	3'25.194	112.150
6 <sup>a</sup> - 2	1'39.490	0'49.328					1'41.445	0'51.924		1'49.937	0'56.191					4'20.018	0'54.824	
6 <sup>a</sup> - 3	2'31.110	0'51.620					2'36.127	0'54.682		2'48.297	0'58.360					5'15.503	0'55.485	
7 <sup>a</sup> - 1	0'50.020	0'50.020	170.617				0'49.090	0'49.090	175.610	0'54.164	0'54.164	158.126				0'51.497	0'51.497	159.058
7 <sup>a</sup> - 2	1'38.896	0'48.876					1'40.019	0'50.929		1'50.020	0'55.856					1'43.928	0'52.431	
7 <sup>a</sup> - 3	2'30.365	0'51.469					2'33.727	0'53.708		2'47.519	0'57.499					2'38.212	0'54.284	
8 <sup>a</sup> - 1	0'50.375	0'50.375	156.522				0'49.314	0'49.314	166.925	0'52.844	0'52.844	166.410				0'51.294	0'51.294	164.134
8 <sup>a</sup> - 2	1'39.866	0'49.491					1'39.392	0'50.078		1'48.510	0'55.666					1'42.990	0'51.696	
8 <sup>a</sup> - 3	2'30.820	0'50.954					2'31.763	0'52.371		2'45.685	0'57.175					2'37.442	0'54.452	
9 <sup>a</sup> - 1	0'49.542	0'49.542	164.134				0'49.237	0'49.237	175.896	0'52.543	0'52.543	170.617				0'50.199	<u>0'50.199</u>	171.702
9 <sup>a</sup> - 2	1'38.775	0'49.233					1'38.399	0'49.162		1'49.027	0'56.484					1'41.516	<u>0'51.317</u>	
9 <sup>a</sup> - 3	2'29.780	0'51.005					2'30.808	0'52.409		2'45.912	0'56.885					<u>2'34.670</u>	<u>0'53.154</u>	
10 <sup>a</sup> - 1	0'48.954	<u>0'48.954</u>	166.154				0'48.727	<u>0'48.727</u>	177.925	0'52.357	0'52.357	172.249				0'54.686	0'54.686	148.352
10 <sup>a</sup> - 2	1'37.829	0'48.875					1'37.102	<u>0'48.375</u>		1'47.857	<u>0'55.500</u>					1'50.510	0'55.824	
10 <sup>a</sup> - 3	2'28.393	0'50.564					<u>2'29.029</u>	<u>0'51.927</u>		<u>2'44.599</u>	0'56.742					3'03.138	1'12.628	PIT
11 <sup>a</sup> - 1	0'49.283	0'49.283	167.442				0'51.130	0'51.130	174.475	1'07.116	1'07.116	107.785						
11 <sup>a</sup> - 2	1'37.496	<u>0'48.213</u>					1'43.739	0'52.609		2'12.999	1'05.883							
11 <sup>a</sup> - 3	<u>2'27.849</u>	<u>0'50.353</u>					2'53.706	1'09.967	PIT									
12 <sup>a</sup> - 1	0'48.993	0'48.993	167.442															
12 <sup>a</sup> - 2	1'39.273	0'50.280																
12 <sup>a</sup> - 3	3'44.459	2'05.186	PIT															

Ideal Lap	
0'48.954	0'48.954
1'37.167	0'48.213
2'27.520	0'50.353

Ideal Lap	
0'48.738	0'48.738
1'38.974	0'50.236
2'30.414	0'51.440

Ideal Lap	
0'48.727	0'48.727
1'37.102	0'48.375
2'29.029	0'51.927

Ideal Lap	
0'51.755	0'51.755
1'47.255	0'55.500
2'43.166	0'55.911

Ideal Lap	
0'55.633	0'55.633
1'52.781	0'57.148
2'55.802	1'03.021

Ideal Lap	
0'50.199	0'50.199
1'41.516	0'51.317
2'34.670	0'53.154

Ideal Best Lap	
0'48.252	0'48.252
1'36.465	0'48.213
2'26.818	0'50.353



LAP ANALYSIS Free practice

Number	15			18			25			34			95			99		
	Lap Time	Partial	Speed	Lap Time	Partial	Speed	Lap Time	Partial	Speed	Lap Time	Partial	Speed	Lap Time	Partial	Speed	Lap Time	Partial	Speed
1 <sup>a</sup> - 1	0'54.552	0'54.552	163.637	0'50.746	0'50.746	169.015	0'51.850	0'51.850	153.192	1'07.596	1'07.596	127.359	1'24.676	1'24.676		0'51.418	0'51.418	155.173
1 <sup>a</sup> - 2	1'47.970	0'53.418		1'42.010	0'51.264		1'45.304	0'53.454		2'17.988	1'10.392		2'56.104	1'31.428		1'44.637	0'53.219	
1 <sup>a</sup> - 3	2'42.306	0'54.336		2'35.428	0'53.418		2'39.230	0'53.926		3'40.567	1'22.579	PIT	4'33.313	1'37.209	PIT	2'39.589	0'54.952	
2 <sup>a</sup> - 1	1'01.146	1'01.146	176.471	0'52.143	0'52.143	163.143	0'59.845	0'59.845	157.435	2'11.973	2'11.973	126.316				0'58.281	0'58.281	167.442
2 <sup>a</sup> - 2	1'54.532	0'53.386		1'45.225	0'53.082		1'54.256	0'54.411		3'22.635	1'10.662					1'52.634	0'54.353	
2 <sup>a</sup> - 3	3'32.561	1'38.029	PIT	2'40.968	0'55.743		2'48.702	0'54.446		4'40.070	1'17.435	PIT				2'46.553	0'53.919	
3 <sup>a</sup> - 1	2'21.164	2'21.164	108.217	0'52.185	0'52.185	175.610	0'52.572	0'52.572	179.701	2'55.504	2'55.504	114.650				0'59.622	0'59.622	166.154
3 <sup>a</sup> - 2	3'15.224	0'54.060		1'44.468	0'52.283		1'45.101	0'52.529		4'02.372	1'06.868					1'51.655	0'52.033	
3 <sup>a</sup> - 3	4'13.162	0'57.938		2'48.711	1'04.243	PIT	2'38.474	0'53.373		5'13.528	1'11.156					2'45.366	0'53.711	
4 <sup>a</sup> - 1	0'54.380	0'54.380	166.154	3'41.600	3'41.600	136.883	0'51.099	0'51.099	165.899	1'03.615	1'03.615	123.429				0'51.301	0'51.301	164.134
4 <sup>a</sup> - 2	1'47.885	0'53.505		4'34.608	0'53.008		1'44.409	0'53.310		2'11.889	1'08.274					1'42.530	0'51.229	
4 <sup>a</sup> - 3	2'44.160	0'56.275		5'29.657	0'55.049		2'37.082	0'52.673		3'21.582	1'09.693					2'35.507	0'52.977	
5 <sup>a</sup> - 1	1'31.143	1'31.143	162.407	0'52.088	0'52.088	168.751	0'51.976	0'51.976	152.328	1'04.321	1'04.321	120.268				0'49.997	0'49.997	173.634
5 <sup>a</sup> - 2	2'26.472	0'55.329		1'44.462	0'52.374		1'44.191	0'52.215		2'10.782	1'06.461					1'40.387	0'50.390	
5 <sup>a</sup> - 3	3'23.830	0'57.358		2'39.090	0'54.628		2'44.597	1'00.406	PIT	3'19.533	1'08.751					2'32.260	0'51.873	
6 <sup>a</sup> - 1	0'54.010	0'54.010	160.001	0'51.614	0'51.614	167.183	3'28.165	3'28.165	110.205	1'02.885	1'02.885	109.312				0'49.269	0'49.269	175.610
6 <sup>a</sup> - 2	1'46.584	0'52.574		1'43.710	0'52.096		4'21.028	0'52.863		2'07.274	1'04.389					1'39.331	0'50.062	
6 <sup>a</sup> - 3	2'42.813	0'56.229		2'38.388	0'54.678		5'13.481	0'52.453		3'10.675	1'03.401					2'31.316	0'51.985	
7 <sup>a</sup> - 1	0'53.514	0'53.514	156.749	0'51.693	0'51.693	168.487	0'50.653	0'50.653	178.218	1'05.804	1'05.804	104.348				0'49.096	0'49.096	182.742
7 <sup>a</sup> - 2	1'48.578	0'55.064		1'42.707	0'51.014		1'41.406	0'50.753		2'09.759	1'03.955					1'40.254	0'51.158	
7 <sup>a</sup> - 3	2'44.226	0'55.648		2'37.557	0'54.850		2'33.317	0'51.911		3'14.443	1'04.684					2'32.281	0'52.027	
8 <sup>a</sup> - 1	0'53.262	0'53.262	169.545	0'50.277	0'50.277	170.348	0'50.931	0'50.931	167.183	1'01.210	1'01.210	129.033				0'48.974	0'48.974	186.529
8 <sup>a</sup> - 2	1'45.177	0'51.915		1'40.904	0'50.627		1'41.934	0'51.003		2'07.850	1'06.640					1'38.445	0'49.471	
8 <sup>a</sup> - 3	2'40.106	0'54.929		2'36.562	0'55.658		2'33.488	0'51.554		3'26.286	1'18.436	PIT				2'29.645	0'51.200	
9 <sup>a</sup> - 1	0'53.290	0'53.290	171.975	0'53.568	0'53.568	163.885	0'58.723	0'58.723	133.830							0'48.252	0'48.252	185.887
9 <sup>a</sup> - 2	2'01.297	1'08.007		1'45.010	0'51.442		1'52.839	0'54.116								1'40.006	0'51.754	
9 <sup>a</sup> - 3	3'22.361	1'21.064	PIT	2'48.510	1'03.500	PIT	2'58.455	1'05.616	PIT							2'46.899	1'06.893	PIT
10 <sup>a</sup> - 1																2'56.141	2'56.141	136.192
10 <sup>a</sup> - 2																3'47.770	0'51.629	
10 <sup>a</sup> - 3																4'59.105	1'11.335	PIT
11 <sup>a</sup> - 1																		
11 <sup>a</sup> - 2																		
11 <sup>a</sup> - 3																		
12 <sup>a</sup> - 1																		
12 <sup>a</sup> - 2																		
12 <sup>a</sup> - 3																		

Ideal Lap	
0'53.262	0'53.262
1'45.177	0'51.915
2'39.513	0'54.336

Ideal Lap	
0'50.277	0'50.277
1'40.904	0'50.627
2'34.322	0'53.418

Ideal Lap	
0'50.653	0'50.653
1'41.406	0'50.753
2'32.960	0'51.554

Ideal Lap	
1'01.210	1'01.210
2'05.165	1'03.955
3'08.566	1'03.401

Ideal Lap	
1'24.676	1'24.676
2'42.828	1'18.152
4'04.157	1'21.329

Ideal Lap	
0'48.252	0'48.252
1'37.723	0'49.471
2'28.923	0'51.200

Ideal Best Lap	
0'48.252	0'48.252
1'36.465	0'48.213
2'26.818	0'50.353





Autodromo di Monza  
On October 03 - 04

### Free practice Sectors Results

Sector - 1			Sector - 2			Sector - 3			Ideal Lap vs Best Lap					
Ord.	Nº Driver	Time	Nº Driver	Time	Nº Driver	Time	Ord.	Nº Driver	Ideal Lap	Best Lap	Ord.			
1	99 Paolo Coppi	48.252	1 Marco Visconti	48.213	1 Marco Visconti	50.353	1	1 Marco Visconti	2'27.520	2'27.849	1			
2	6 Riccardo Calegari	48.727	6 Riccardo Calegari	48.375	99 Paolo Coppi	51.200	2	99 Paolo Coppi	2'28.923	2'29.645	3			
3	5 Paolo Collivadino	48.738	99 Paolo Coppi	49.471	5 Paolo Collivadino	51.440	3	6 Riccardo Calegari	2'29.029	2'29.029	2			
4	1 Marco Visconti	48.954	5 Paolo Collivadino	50.236	25 Arduino Giretti	51.554	4	5 Paolo Collivadino	2'30.414	2'31.780	4			
5	13 Luca Marietti	50.199	18 Giuliano Zecchetti	50.627	6 Riccardo Calegari	51.927	5	25 Arduino Giretti	2'32.960	2'33.317	5			
6	18 Giuliano Zecchetti	50.277	25 Arduino Giretti	50.753	13 Luca Marietti	53.154	6	18 Giuliano Zecchetti	2'34.322	2'35.428	7			
7	25 Arduino Giretti	50.653	13 Luca Marietti	51.317	18 Giuliano Zecchetti	53.418	7	13 Luca Marietti	2'34.670	2'34.670	6			
8	7 Luca Maccanti	51.755	15 Giorgio Berto	51.915	15 Giorgio Berto	54.336	8	15 Giorgio Berto	2'39.513	2'40.106	8			
9	15 Giorgio Berto	53.262	7 Luca Maccanti	55.500	7 Luca Maccanti	55.911	9	7 Luca Maccanti	2'43.166	2'44.599	9			
10	9 Isacco Co	55.633	9 Isacco Co	57.148	9 Isacco Co	1'03.021	10	9 Isacco Co	2'55.802	3'03.308	10			
11	34 Maurizio Riponi	1'01.210	34 Maurizio Riponi	1'03.955	34 Maurizio Riponi	1'03.401	11	34 Maurizio Riponi	3'08.566	3'10.675	11			
12	95 Luca Riponi	1'24.676	95 Luca Riponi	1'18.152	95 Luca Riponi	1'21.329	12	95 Luca Riponi	4'04.157	4'33.313	12			



Santisima Trinidad 30 28010 MADRID  
Tel y Fax 91.448.32.06  
www.cronococa.com  
e-mail: info@cronococa.com



Juan Bravo 17 28006 MADRID  
Tel 91.432.27.50  
www.gtssport.es  
e-mail: info@gtssport.es



Autodromo di Monza

On October 03 - 04

**Free practice MAXIMUM SPEED**

<u>Ord.</u>	<u>Nº</u>	<u>Team</u>	<u>Driver</u>	<u>Vehicle</u>	<u>Km/h</u>
1	99	Sarchio racing	Paolo Coppi	Reggiani	186.529
2	5	Stilo corse	Paolo Collivadino	Reggiani	184.616
3	1	Stilo corse	Marco Visconti	Reggiani	180.000
4	25	Team Covir	Arduino Giretti	Covir	179.701
5	7	Sarchio racing	Luca Maccanti	Reggiani	179.105
6	6	Diesse corse	Riccardo Calegari	Silva	177.925
7	15	BMG corse	Giorgio Berto	Reggiani	176.471
8	18	Zemire's racing	Giuliano Zecchetti	Reggiani	175.610
9	13	Diesse corse	Luca Marietti	Silva	171.702
10	9	Team Covir	Isacco Co	Covir	132.679
11	34	Riponi corse	Maurizio Riponi	Dywa-Riponi	129.033
12	95	Riponi corse	Luca Riponi	Dywa-Riponi	98.451



Santisima Trinidad 30 28010 MADRID

Tel y Fax 91.448.32.06

www.cronococa.com

e-mail: info@cronococa.com



Juan Bravo 17 28006 MADRID

Tel 91.432.27.50

www.gtssport.es

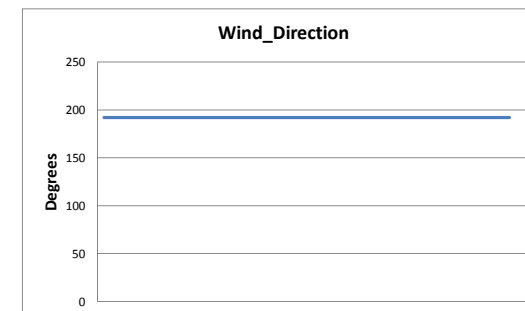
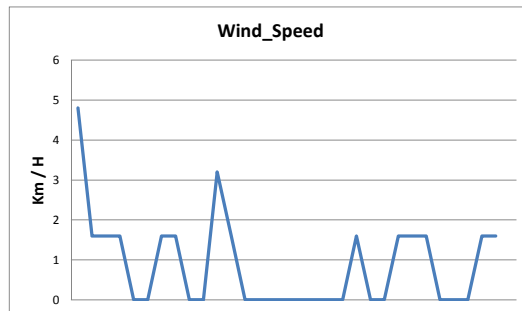
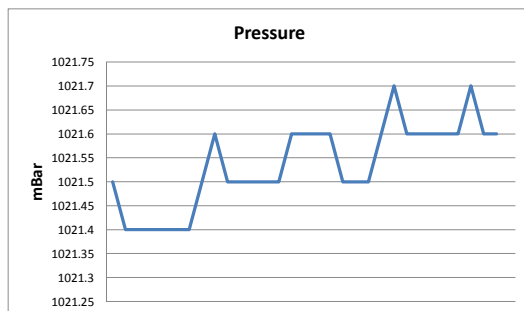
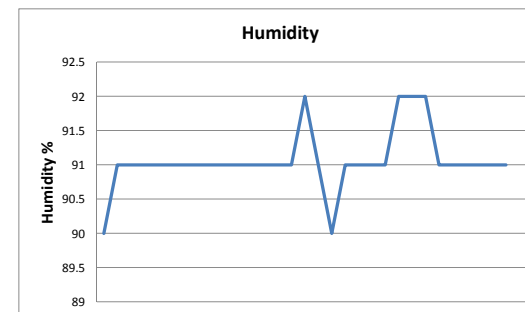
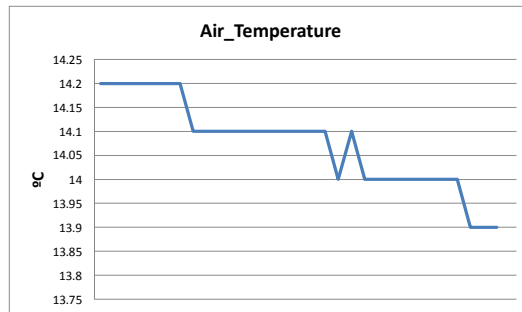
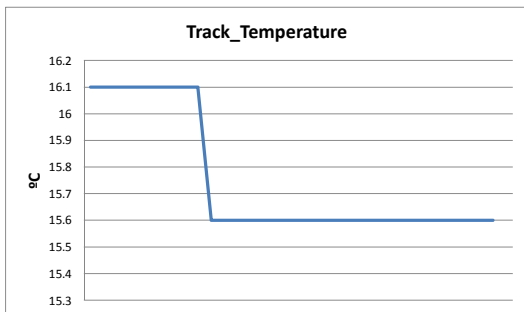
e-mail: info@gtssport.es



**WEATHER REPORT Free practice**

Autodromo di Monza  
On October 03 - 04

Track Status **WET**



Santísima Trinidad 30 28010 MADRID  
Tel y Fax 91.448.32.06  
www.cronococa.com  
e-mail: info@cronococa.com



Juan Bravo 17 28006 MADRID  
Tel 91.432.27.50  
www.gt sport.es  
e-mail: info@gt sport.es