



Autodromo di Monza

RACE 2

CLASSIFICATION

02/10/2016

Clas.	Nº	Entrant	Driver	Nat.	Driver 2	Nat.	Car Type	Cat.	Cla.	Laps	Total Time	Km/h.	Gap	Best Time	Km/h.	
1	27	Works	<u>Mike Cantillon</u>	GBR			RXC Spyder Turbo	M	1º	32	1.01'13.061	181.689		7	1'48.673	191.905
2	2	Nielsen	Tony Wells	GBR	<u>James Littlejohn</u>	GBR	SR8 RX	M	2º	32	1.01'19.157	181.388	6"096	18	1'49.328	190.755
3	61	RAW Motorsport	<u>Manhal Allos</u>	GBR			SR8 RX	M	3º	32	1.01'33.395	180.689	20"334	30	1'49.752	190.018
4	20	Monza Garage	<u>Alain Costa</u>	MCO			SR8 RX	M	4º	31	59'29.546	181.116	1 Lap.	30	1'50.106	189.407
5	63	Works	<u>Jim Booth</u>	USA			RXC Spyder Turbo	M	5º	31	1.01'51.485	174.189	1 Lap.	10	1'50.822	188.183
6	3	Nielsen	Riccardo Dona	ITA	<u>Stuart Moseley</u>	GBR	SR3 RSX	S	1º	31	1.02'46.663	171.638	1 Lap.	17	1'56.797	178.556
7	66	Nielsen	<u>Bradley Ellis</u>	GBR	Brian Caudwell	GBR	SR3 RSX	S	2º	31	1.02'56.237	171.202	1 Lap.	11	1'57.066	178.146
8	12	Works	<u>Peter Paddon</u>	AUS	James Winslow	GBR	SR3 RSX	S	3º	31	1.03'06.488	170.739	1 Lap.	31	1'57.169	177.990
9	17	Nielsen	<u>Jani Hjerpe</u>	FIN			SR3 RSX	S	4º	30	1.01'35.434	169.302	2 Lap.	13	1'58.769	175.592
10	15	Nielsen	<u>Jack Manchester</u>	GBR	James Robinson	GBR	SR3 RSX	S	5º	30	1.01'54.709	168.424	2 Lap.	17	1'58.810	175.531
11	29	RAW Motorsport	<u>Marcello Marateotto</u>	RUS	Marco Cencetti	RUS	SR3 RSX	S	6º	30	1.02'03.983	168.004	2 Lap.	26	1'57.303	177.786
12	10	Nielsen	<u>John Caudwell</u>	GBR			SR3 RSX	S	7º	30	1.02'14.549	167.529	2 Lap.	23	1'59.775	174.117
13	9	Works	<u>Konstantin Gugkaev</u>	RUS			SR3 RSX	S	8º	30	1.02'38.634	166.456	2 Lap.	20	2'01.171	172.111

NOT CLASSIFIED

14	99	Works	<u>Jamie Constable</u>	GBR			RXC Spyder Turbo	M	6º	27	54'08.753	173.322	5 Lap.	8	1'48.936	191.441
15	69	Monza Garage	John Corbett	AUS	<u>James Winslow</u>	GBR	RXC Spyder Turbo	M	7º	24	46'12.749	180.513	8 Lap.	7	1'48.724	191.815
16	46	RAW Motorsport	<u>Jeremy Ferguson</u>	GBR	Andrew Ferguson	GBR	RXC Spyder Turbo	M	8º	13	25'45.553	175.415	19 Lap.	8	1'51.557	186.943
17	25	360 Racing	Martin Verity	GBR	<u>Austin Kinsella</u>	GBR	SR3 RSX	S	9º	5	10'34.942	164.227	27 Lap.	4	1'59.839	174.024

Fastest lap Mike Cantillon 1'48.673 191.905 Km/h.

Published at:.....

Track Status **WET**

Stewards:	Race Director:	Timekeeper:
-----------	----------------	-----------------





Autodromo di Monza

RACE 2

LAP ANALYSIS

02/10/2016

Number	2			3			9			10			12		
Lap	Lap Time	Partial	Speed	Lap Time	Partial	Speed	Lap Time	Partial	Speed	Lap Time	Partial	Speed	Lap Time	Partial	Speed
1 ^a - 1	0'41.445	0'41.445	216.433	0'46.711	0'46.711	195.299	0'50.239	0'50.239	177.340	0'55.032	0'55.032	195.299	0'48.351	0'48.351	189.474
1 ^a - 2	1'20.171	0'38.726	Littlejohn	1'27.055	0'40.344	Moseley	1'33.948	0'43.709		1'36.574	0'41.542		1'30.112	0'41.761	Paddon
1 ^a - 3	1'58.450	0'38.279		2'06.969	0'39.914		2'17.353	0'43.405		2'17.993	0'41.419		2'11.406	0'41.294	
2 ^a - 1	0'36.104	0'36.104	242.697	0'38.761	0'38.761	232.759	0'40.120	0'40.120	211.765	0'40.198	0'40.198	220.409	0'39.040	0'39.040	233.262
2 ^a - 2	1'14.120	0'38.016	Littlejohn	1'18.078	0'39.317	Moseley	1'22.368	0'42.248		1'21.903	0'41.705		1'19.724	0'40.684	Paddon
2 ^a - 3	1'52.399	0'38.279		1'58.246	0'40.168		2'05.224	0'42.856		2'03.430	0'41.527		2'00.981	0'41.257	
3 ^a - 1	0'35.375	0'35.375	264.706	0'38.706	0'38.706	233.262	0'39.599	0'39.599	230.770	0'39.807	0'39.807	226.891	0'38.826	0'38.826	231.760
3 ^a - 2	1'12.962	0'37.587	Littlejohn	1'17.907	0'39.201	Moseley	1'20.995	0'41.396		1'20.075	0'40.268		1'19.053	0'40.227	Paddon
3 ^a - 3	1'50.428	0'37.466		1'57.489	0'39.582		2'03.287	0'42.292		2'01.166	0'41.091		1'59.447	0'40.394	
4 ^a - 1	0'35.286	0'35.286	266.010	0'39.244	0'39.244	227.849	0'39.162	0'39.162	231.264	0'39.663	0'39.663	226.416	0'38.617	0'38.617	232.759
4 ^a - 2	1'12.657	0'37.371	Littlejohn	1'18.832	0'39.588	Moseley	1'20.413	0'41.251		1'20.498	0'40.835		1'18.898	0'40.281	Paddon
4 ^a - 3	1'50.166	0'37.509		1'58.524	0'39.692		2'02.609	0'42.196		2'01.595	0'41.097		1'59.721	0'40.823	
5 ^a - 1	0'35.180	0'35.180	266.010	0'39.019	0'39.019	225.942	0'39.292	0'39.292	230.278	0'39.416	0'39.416	226.416	0'38.773	0'38.773	234.274
5 ^a - 2	1'12.442	0'37.262	Littlejohn	1'18.966	0'39.947	Moseley	1'20.860	0'41.568		1'20.218	0'40.802		1'18.606	0'39.833	Paddon
5 ^a - 3	1'49.859	0'37.417		1'58.860	0'39.894		2'02.691	0'41.831		2'01.035	0'40.817		1'58.807	0'40.201	
6 ^a - 1	0'35.196	0'35.196	266.010	0'38.506	0'38.506	232.259	0'39.250	0'39.250	230.278	0'39.405	0'39.405	225.470	0'38.589	0'38.589	232.759
6 ^a - 2	1'12.364	0'37.168	Littlejohn	1'17.435	0'38.929	Moseley	1'20.235	0'40.985		1'20.016	0'40.611		1'18.405	0'39.816	Paddon
6 ^a - 3	1'49.603	0'37.239		1'57.321	0'39.886		2'02.101	0'41.866		2'01.369	0'41.353		1'58.890	0'40.485	
7 ^a - 1	0'35.211	0'35.211	265.357	0'38.637	0'38.637	231.264	0'39.311	0'39.311	228.330	0'39.694	0'39.694	225.470	0'38.815	0'38.815	232.259
7 ^a - 2	1'12.435	0'37.224	Littlejohn	1'17.577	0'38.940	Moseley	1'20.126	0'40.815		1'20.131	0'40.437		1'18.668	0'39.853	Paddon
7 ^a - 3	1'49.688	0'37.253		1'57.190	0'39.613		2'02.007	0'41.881		2'01.493	0'41.362		1'59.162	0'40.494	
8 ^a - 1	0'35.160	0'35.160	266.010	0'38.618	0'38.618	230.770	0'39.278	0'39.278	229.788	0'39.359	0'39.359	225.000	0'38.890	0'38.890	232.259
8 ^a - 2	1'12.228	0'37.068	Littlejohn	1'17.580	0'38.962	Moseley	1'20.088	0'40.810		1'19.739	0'40.380		1'18.673	0'39.783	Paddon
8 ^a - 3	1'49.537	0'37.309		1'57.085	0'39.505		2'01.709	0'41.621		2'00.414	0'40.675		1'59.359	0'40.686	
9 ^a - 1	0'35.096	0'35.096	266.010	0'38.462	0'38.462	230.770	0'39.861	0'39.861	229.788	0'39.276	0'39.276	225.470	0'38.795	0'38.795	231.760
9 ^a - 2	1'12.244	0'37.148	Littlejohn	1'17.377	0'38.915	Moseley	1'20.614	0'40.753		1'20.774	0'41.498		1'18.369	0'39.574	Paddon
9 ^a - 3	1'49.530	0'37.286		1'57.068	0'39.691		2'02.452	0'41.838		2'01.614	0'40.840		1'58.981	0'40.612	
10 ^a - 1	0'35.431	0'35.431	266.667	0'38.457	0'38.457	229.788	0'39.171	0'39.171	229.788	0'39.181	0'39.181	225.942	0'38.758	0'38.758	231.760
10 ^a - 2	1'12.798	0'37.367	Littlejohn	1'17.484	0'39.027	Moseley	1'19.758	0'40.587		1'19.287	0'40.106		1'18.873	0'40.115	Paddon
10 ^a - 3	1'50.174	0'37.376		1'57.189	0'39.705		2'01.416	0'41.658		2'01.785	0'42.498		1'59.287	0'40.414	
11 ^a - 1	0'35.229	0'35.229	265.357	0'38.372	0'38.372	230.770	0'40.169	0'40.169	230.770	0'39.390	0'39.390	225.942	0'38.945	0'38.945	231.760
11 ^a - 2	1'12.408	0'37.179	Littlejohn	1'17.418	0'39.046	Moseley	1'22.767	0'42.598		1'20.007	0'40.617		1'18.792	0'39.847	Paddon
11 ^a - 3	1'49.713	0'37.305		1'56.993	0'39.575		2'04.870	0'42.103		2'01.050	0'41.043		1'59.515	0'40.723	
12 ^a - 1	0'35.064	0'35.064	267.327	0'38.569	0'38.569	230.278	0'39.167	0'39.167	231.264	0'39.464	0'39.464	220.409	0'38.542	0'38.542	232.759
12 ^a - 2	1'12.439	0'37.375	Littlejohn	1'17.623	0'39.054	Moseley	1'19.923	0'40.756		1'19.632	0'40.168		1'18.945	0'40.403	Paddon
12 ^a - 3	1'49.758	0'37.319		1'57.337	0'39.714		2'01.340	0'41.417		2'00.860	0'41.228		1'59.358	0'40.413	
13 ^a - 1	0'35.129	0'35.129	266.010	0'38.568	0'38.568	230.278	0'39.227	0'39.227	230.278	0'39.312	0'39.312	226.416	0'38.894	0'38.894	231.760
13 ^a - 2	1'12.885	0'37.756	Littlejohn	1'17.644	0'39.076	Moseley	1'19.890	0'40.663		1'19.386	0'40.074		1'19.117	0'40.223	Paddon
13 ^a - 3	1'50.305	0'37.420		1'57.328	0'39.684		2'01.411	0'41.521		1'59.822	0'40.436		1'59.880	0'40.763	
14 ^a - 1	0'35.225	0'35.225	266.010	0'38.612	0'38.612	230.278	0'39.340	0'39.340	229.300	0'39.788	0'39.788	225.942	0'38.925	0'38.925	230.770
14 ^a - 2	1'12.322	0'37.097	Littlejohn	1'18.010	0'39.398	Moseley	1'20.795	0'41.455		1'28.234	0'48.446		1'18.674	0'39.749	Paddon
14 ^a - 3	1'49.845	0'37.523		1'58.443	0'40.433		2'09.085	0'48.290	PIT	2'15.555	0'47.321	PIT	1'59.114	0'40.440	
15 ^a - 1	0'35.181	0'35.181	266.010	0'38.757	0'38.757	231.264	1'44.502	1'44.502	184.616	1'45.314	1'45.314	186.529	0'38.698	0'38.698	230.770
15 ^a - 2	1'12.449	0'37.268	Littlejohn	1'17.873	0'39.116	Moseley	2'25.329	0'40.827		2'26.451	0'41.137		1'18.475	0'39.777	Paddon
15 ^a - 3	1'49.669	0'37.220		1'57.313	0'39.440		3'07.594	0'42.265		3'07.584	0'41.133		2'00.739	0'42.264	
16 ^a - 1	0'35.462	0'35.462	263.415	0'38.492	0'38.492	231.760	0'40.068	0'40.068	213.018	0'39.449	0'39.449	226.416	0'38.909	0'38.909	233.767
16 ^a - 2	1'12.794	0'37.332	Littlejohn	1'17.398	0'38.906	Moseley	1'20.920	0'40.852		1'20.090	0'40.641		1'18.769	0'39.860	Paddon
16 ^a - 3	1'50.143	0'37.349		1'56.810	0'39.412		2'02.420	0'41.500		2'02.656	0'42.566		2'08.067	0'49.298	PIT
17 ^a - 1	0'35.087	0'35.087	266.010	0'38.497	0'38.497	231.264	0'39.224	0'39.224	230.278	0'39.470	0'39.470	225.942	2'02.095	2'02.095	187.827
17 ^a - 2	1'12.248	0'37.161	Littlejohn	1'17.432	0'38.935	Moseley	1'19.793	0'40.569		1'20.113	0'40.643		2'42.650	0'40.555	Winslow
17 ^a - 3	1'49.504	0'37.256		1'56.797	0'39.365		2'01.459	0'41.666		2'01.312	0'41.199		3'23.096	0'40.446	
18 ^a - 1	0'35.041	0'35.041	266.010	0'38.576	0'38.576	230.770	0'39.252	0'39.252	229.788	0'39.346	0'39.346	225.942	0'39.124	0'39.124	234.274
18 ^a - 2	1'12.223	0'37.182	Littlejohn	1'17.790	0'39.214	Moseley	1'19.725	0'40.473		1'20.127	0'40.781		1'18.976	0'39.852	Winslow
18 ^a - 3	1'49.328	0'37.105		2'03.166	0'45.376	PIT	2'01.282	0'41.557		2'01.072	0'40.945		1'58.969	0'39.993	
19 ^a - 1	0'35.071	0'35.071	266.667	2'03.374	2'03.374	185.249	0'39.283	0'39.283	230.278	0'39.408	0'39.408	225.942	0'38.873	0'38.873	233.262
19 ^a - 2	1'12.070	0'36.999	Littlejohn	2'44.534	0'41.160	Dona	1'19.920	0'40.637		1'20.053	0'40.645		1'18.593	0'39.720	Winslow
19 ^a - 3	1'55.492	0'43.422	PIT	3'25.626	0'41.092		2'01.870	0'41.950		2'01.058	0'41.005		1'58.624	0'40.031	
20 ^a - 1	2'25.445	2'25.445	201.118	0'38.993	0'38.993	229.300	0'39.129	0'39.129	229.788	0'39.334	0'3				



Autodromo di Monza

RACE 2

LAP ANALYSIS

02/10/2016

Number	2			3			9			10			12		
Lap	Lap Time	Partial	Speed	Lap Time	Partial	Speed	Lap Time	Partial	Speed	Lap Time	Partial	Speed	Lap Time	Partial	Speed
22 ^a - 1	0'36.352	0'36.352	229.300	0'38.850	0'38.850	229.300	0'39.110	0'39.110	229.788	0'39.877	0'39.877	225.470	0'38.550	0'38.550	233.262
22 ^a - 2	1'15.015	0'38.663	Wells	1'18.777	0'39.927	Dona	1'20.590	0'41.480		1'19.984	0'40.107		1'17.803	0'39.253	Winslow
22 ^a - 3	1'53.617	0'38.602		1'59.172	0'40.395		2'02.090	0'41.500		2'00.449	0'40.465		1'57.629	0'39.826	
23 ^a - 1	0'35.564	0'35.564	264.059	0'38.738	0'38.738	230.278	0'39.006	0'39.006	229.788	0'39.340	0'39.340	225.942	0'38.509	0'38.509	232.759
23 ^a - 2	1'14.245	0'38.681	Wells	1'18.665	0'39.927	Dona	1'20.982	0'41.976		1'19.234	0'39.894		1'18.148	0'39.639	Winslow
23 ^a - 3	1'52.733	0'38.488		1'59.551	0'40.886		2'02.732	0'41.750		1'59.775	0'40.541		1'58.272	0'40.124	
24 ^a - 1	0'35.647	0'35.647	265.357	0'38.792	0'38.792	230.770	0'39.558	0'39.558	230.278	0'39.226	0'39.226	225.470	0'38.489	0'38.489	232.759
24 ^a - 2	1'14.606	0'38.959	Wells	1'18.780	0'39.988	Dona	1'20.299	0'40.741		1'19.091	0'39.865		1'17.848	0'39.359	Winslow
24 ^a - 3	1'52.809	0'38.203		1'59.196	0'40.416		2'01.698	0'41.399		2'00.010	0'40.919		1'58.005	0'40.157	
25 ^a - 1	0'35.763	0'35.763	266.667	0'38.906	0'38.906	229.788	0'40.019	0'40.019	229.788	0'39.379	0'39.379	225.470	0'38.445	0'38.445	233.262
25 ^a - 2	1'15.567	0'39.804	Wells	1'18.884	0'39.978	Dona	1'20.647	0'40.628		1'20.300	0'40.921		1'17.613	0'39.168	Winslow
25 ^a - 3	1'54.468	0'38.901		1'59.428	0'40.544		2'01.901	0'41.254		2'01.469	0'41.169		1'57.311	0'39.698	
26 ^a - 1	0'35.473	0'35.473	264.059	0'39.369	0'39.369	227.849	0'40.890	0'40.890	230.770	0'39.288	0'39.288	225.942	0'38.460	0'38.460	233.262
26 ^a - 2	1'13.806	0'38.333	Wells	1'18.871	0'39.502	Dona	1'21.511	0'40.621		1'21.272	0'41.984		1'18.103	0'39.643	Winslow
26 ^a - 3	1'51.974	0'38.168		1'59.094	0'40.223		2'02.973	0'41.462		2'02.502	0'41.230		1'57.870	0'39.767	
27 ^a - 1	0'35.320	0'35.320	266.667	0'38.600	0'38.600	229.788	0'39.394	0'39.394	229.300	0'41.395	0'41.395	225.470	0'38.409	0'38.409	233.767
27 ^a - 2	1'14.007	0'38.687	Wells	1'18.392	0'39.792	Dona	1'20.165	0'40.771		1'22.103	0'40.708		1'17.919	0'39.510	Winslow
27 ^a - 3	1'52.323	0'38.316		1'58.770	0'40.378		2'01.903	0'41.738		2'03.568	0'41.465		1'58.028	0'40.109	
28 ^a - 1	0'35.496	0'35.496	263.415	0'38.725	0'38.725	229.300	0'39.917	0'39.917	228.814	0'39.390	0'39.390	226.416	0'38.535	0'38.535	232.759
28 ^a - 2	1'13.538	0'38.042	Wells	1'18.280	0'39.555	Dona	1'20.730	0'40.813		1'19.590	0'40.200		1'17.852	0'39.317	Winslow
28 ^a - 3	1'51.764	0'38.226		1'58.625	0'40.345		2'02.568	0'41.838		2'00.889	0'41.299		1'57.929	0'40.077	
29 ^a - 1	0'35.364	0'35.364	266.667	0'38.872	0'38.872	229.788	0'39.402	0'39.402	228.814	0'39.580	0'39.580	225.470	0'38.549	0'38.549	232.759
29 ^a - 2	1'13.574	0'38.210	Wells	1'18.682	0'39.810	Dona	1'21.435	0'42.033		1'19.897	0'40.317		1'17.766	0'39.217	Winslow
29 ^a - 3	1'51.585	0'38.011		1'59.047	0'40.365		2'03.942	0'42.507		2'00.990	0'41.093		1'57.405	0'39.639	
30 ^a - 1	0'35.339	0'35.339	266.667	0'38.954	0'38.954	228.330	0'39.413	0'39.413	228.814	0'39.458	0'39.458	225.470	0'38.386	0'38.386	232.759
30 ^a - 2	1'13.686	0'38.347	Wells	1'18.741	0'39.787	Dona	1'21.267	0'41.854		1'19.788	0'40.330		1'17.559	0'39.173	Winslow
30 ^a - 3	1'51.824	0'38.138		1'59.112	0'40.371		2'03.438	0'42.171		2'00.622	0'40.834		1'57.230	0'39.671	
31 ^a - 1	0'35.426	0'35.426	264.706	0'38.818	0'38.818	229.300							0'38.371	0'38.371	233.262
31 ^a - 2	1'13.946	0'38.520	Wells	1'18.748	0'39.930	Dona							1'17.730	0'39.359	Winslow
31 ^a - 3	1'51.686	0'37.740		1'59.233	0'40.485								1'57.169	0'39.439	
32 ^a - 1	0'35.362	0'35.362	265.357												
32 ^a - 2	1'13.231	0'37.869	Wells												
32 ^a - 3	1'51.270	0'38.039													

Ideal Lap	
0'35.041	0'35.041
1'12.040	0'36.999
1'49.145	0'37.105

Ideal Lap	
0'38.372	0'38.372
1'17.278	0'38.906
1'56.643	0'39.365

Ideal Lap	
0'39.006	0'39.006
1'19.479	0'40.473
2'00.733	0'41.254

Ideal Lap	
0'39.181	0'39.181
1'19.046	0'39.865
1'59.482	0'40.436

Ideal Lap	
0'38.371	0'38.371
1'17.512	0'39.141
1'56.951	0'39.439

Ideal Best Lap	
0'33.578	0'33.578
1'10.577	0'36.999
1'47.682	0'37.105



Autodromo di Monza

RACE 2

LAP ANALYSIS

02/10/2016

Number	15			17			20			25			27		
Lap	Lap Time	Partial	Speed	Lap Time	Partial	Speed	Lap Time	Partial	Speed	Lap Time	Partial	Speed	Lap Time	Partial	Speed
1 ^a - 1	0'49.479	0'49.479	202.248	0'47.511	0'47.511	194.946	0'42.504	0'42.504	201.870	0'49.326	0'49.326	175.041	0'41.551	0'41.551	199.262
1 ^a - 2	1'32.500	0'43.021	Manchester	1'29.343	0'41.832		1'24.449	0'41.945		1'31.694	0'42.368	Kinsella	1'20.411	0'38.860	
1 ^a - 3	2'14.832	0'42.332		2'11.503	0'42.160		2'04.310	0'39.861		2'13.909	0'42.215		1'58.732	0'38.321	
2 ^a - 1	0'39.858	0'39.858	224.533	0'41.385	0'41.385	225.942	0'36.189	0'36.189	237.886	0'40.247	0'40.247	224.533	0'34.589	0'34.589	246.014
2 ^a - 2	1'21.438	0'41.580	Manchester	1'22.722	0'41.337		1'15.422	0'39.233		1'21.217	0'40.970	Kinsella	1'12.609	0'38.020	
2 ^a - 3	2'02.988	0'41.550		2'04.066	0'41.344		1'54.370	0'38.948		2'02.039	0'40.822		1'50.884	0'38.275	
3 ^a - 1	0'39.608	0'39.608	225.470	0'39.287	0'39.287	226.416	0'35.929	0'35.929	260.241	0'39.526	0'39.526	204.934	0'34.290	0'34.290	250.581
3 ^a - 2	1'20.221	0'40.613	Manchester	1'19.979	0'40.692		1'14.639	0'38.710		1'19.953	0'40.427	Kinsella	1'12.429	0'38.139	
3 ^a - 3	2'01.434	0'41.213		2'03.206	0'43.227		1'53.261	0'38.622		2'02.064	0'42.111		1'50.441	0'38.012	
4 ^a - 1	0'39.247	0'39.247	225.470	0'39.135	0'39.135	226.416	0'35.721	0'35.721	258.993	0'39.067	0'39.067	230.770	0'34.282	0'34.282	248.276
4 ^a - 2	1'19.496	0'40.249	Manchester	1'19.272	0'40.137		1'13.921	0'38.200		1'19.094	0'40.027	Kinsella	1'12.016	0'37.734	
4 ^a - 3	2'00.369	0'40.873		1'59.738	0'40.466		1'52.085	0'38.164		1'59.839	0'40.745		1'49.639	0'37.623	
5 ^a - 1	0'39.227	0'39.227	225.942	0'39.317	0'39.317	226.416	0'35.387	0'35.387	266.010	0'42.214	0'42.214	230.278	0'33.953	0'33.953	260.241
5 ^a - 2	1'19.490	0'40.263	Manchester	1'19.099	0'39.782		1'13.136	0'37.749		1'29.008	0'46.794	Kinsella	1'11.674	0'37.721	
5 ^a - 3	1'59.978	0'40.488		1'59.478	0'40.379		1'51.152	0'38.016		2'17.091	0'48.083	PIT	1'49.734	0'38.060	
6 ^a - 1	0'39.678	0'39.678	225.942	0'38.977	0'38.977	225.942	0'35.297	0'35.297	265.357				0'34.112	0'34.112	248.848
6 ^a - 2	1'19.727	0'40.049	Manchester	1'18.943	0'39.966		1'13.303	0'38.006					1'11.698	0'37.586	
6 ^a - 3	2'00.117	0'40.390		1'59.867	0'40.924		1'51.157	0'37.854					1'49.112	0'37.414	
7 ^a - 1	0'39.468	0'39.468	225.470	0'39.095	0'39.095	225.942	0'35.159	0'35.159	266.010				0'33.867	0'33.867	255.320
7 ^a - 2	1'19.561	0'40.093	Manchester	1'18.781	0'39.686		1'13.159	0'38.000					1'11.303	0'37.436	
7 ^a - 3	2'00.061	0'40.500		1'59.325	0'40.544		1'51.289	0'38.130					1'48.673	0'37.370	
8 ^a - 1	0'39.297	0'39.297	225.470	0'39.099	0'39.099	225.470	0'36.717	0'36.717	262.774				0'33.784	0'33.784	263.415
8 ^a - 2	1'19.480	0'40.183	Manchester	1'18.776	0'39.677		1'14.553	0'37.836					1'11.433	0'37.649	
8 ^a - 3	1'59.959	0'40.479		1'59.498	0'40.722		1'52.276	0'37.723					1'48.673	0'37.240	
9 ^a - 1	0'39.332	0'39.332	225.470	0'38.997	0'38.997	225.000	0'35.195	0'35.195	265.357				0'33.989	0'33.989	255.925
9 ^a - 2	1'19.459	0'40.127	Manchester	1'18.883	0'39.886		1'13.037	0'37.842					1'11.190	0'37.201	
9 ^a - 3	2'00.182	0'40.723		1'59.271	0'40.388		1'50.891	0'37.854					1'48.691	0'37.501	
10 ^a - 1	0'39.399	0'39.399	225.000	0'39.199	0'39.199	225.470	0'35.487	0'35.487	235.295				0'33.873	0'33.873	262.774
10 ^a - 2	1'19.305	0'39.906	Manchester	1'18.927	0'39.728		1'13.366	0'37.879					1'11.941	0'38.068	
10 ^a - 3	1'59.670	0'40.365		1'59.578	0'40.651		1'51.124	0'37.758					1'49.282	0'37.341	
11 ^a - 1	0'39.258	0'39.258	225.942	0'39.127	0'39.127	226.416	0'35.133	0'35.133	266.010				0'33.969	0'33.969	250.581
11 ^a - 2	1'18.987	0'39.729	Manchester	1'19.269	0'40.142		1'12.872	0'37.739					1'11.864	0'37.895	
11 ^a - 3	1'59.271	0'40.284		1'59.787	0'40.518		1'50.904	0'38.032					1'49.798	0'37.934	
12 ^a - 1	0'39.134	0'39.134	225.470	0'39.039	0'39.039	226.416	0'35.547	0'35.547	266.667				0'34.154	0'34.154	266.667
12 ^a - 2	1'19.025	0'39.891	Manchester	1'18.618	0'39.579		1'13.393	0'37.846					1'11.731	0'37.577	
12 ^a - 3	1'59.469	0'40.444		1'58.855	0'40.237		1'51.435	0'38.042					1'50.685	0'38.954	
13 ^a - 1	0'39.348	0'39.348	224.533	0'38.971	0'38.971	225.942	0'35.535	0'35.535	264.706				0'34.535	0'34.535	264.706
13 ^a - 2	1'19.425	0'40.077	Manchester	1'18.442	0'39.471		1'13.490	0'37.955					1'12.331	0'37.796	
13 ^a - 3	2'02.195	0'42.770		1'58.769	0'40.327		1'51.553	0'38.063					1'49.780	0'37.449	
14 ^a - 1	0'39.550	0'39.550	224.533	0'38.928	0'38.928	225.942	0'35.394	0'35.394	266.667				0'34.118	0'34.118	247.707
14 ^a - 2	1'20.149	0'40.599	Manchester	1'20.241	0'41.313		1'13.287	0'37.893					1'12.144	0'38.026	
14 ^a - 3	2'07.364	0'47.215	PIT	2'07.214	0'46.973	PIT	1'52.155	0'38.868					1'49.736	0'37.592	
15 ^a - 1	1'59.033	1'59.033	184.616	1'54.172	1'54.172	185.568	0'35.918	0'35.918	267.327				0'33.936	0'33.936	266.667
15 ^a - 2	2'39.723	0'40.690	Robinson	2'37.375	0'43.203		1'14.391	0'38.473					1'11.532	0'37.596	
15 ^a - 3	3'20.468	0'40.745		3'17.930	0'40.555		1'53.331	0'38.940					1'49.574	0'38.042	
16 ^a - 1	0'39.075	0'39.075	225.942	0'39.086	0'39.086	225.942	0'35.162	0'35.162	267.327				0'34.178	0'34.178	262.136
16 ^a - 2	1'19.053	0'39.978	Robinson	1'19.130	0'40.044		1'13.387	0'38.225					1'11.498	0'37.320	
16 ^a - 3	1'59.523	0'40.470		1'59.693	0'40.563		1'52.120	0'38.733					1'55.649	0'44.151	PIT
17 ^a - 1	0'39.082	0'39.082	225.942	0'40.234	0'40.234	225.942	0'35.345	0'35.345	260.870				2'18.647	2'18.647	203.390
17 ^a - 2	1'18.450	0'39.368	Robinson	1'20.120	0'39.886		1'13.829	0'38.484					2'56.400	0'37.753	
17 ^a - 3	1'58.810	0'40.360		2'00.863	0'40.743		1'59.835	0'46.006	PIT				3'34.284	0'37.884	
18 ^a - 1	0'39.229	0'39.229	226.416	0'39.210	0'39.210	226.891	2'04.113	2'04.113	215.140				0'34.180	0'34.180	269.327
18 ^a - 2	1'18.862	0'39.633	Robinson	1'19.221	0'40.011		2'42.270	0'38.157					1'11.947	0'37.767	
18 ^a - 3	1'59.039	0'40.177		1'59.742	0'40.521		3'20.079	0'37.809					1'49.899	0'37.952	
19 ^a - 1	0'39.349	0'39.349	225.942	0'39.327	0'39.327	226.416	0'35.415	0'35.415	264.059				0'35.222	0'35.222	250.581
19 ^a - 2	1'19.256	0'39.907	Robinson	1'19.304	0'39.977		1'13.362	0'37.947					1'13.254	0'38.032	
19 ^a - 3	1'59.837	0'40.581		2'00.027	0'40.723		1'51.189	0'37.827					1'51.835	0'38.581	
20 ^a - 1	0'39.545	0'39.545	224.067	0'39.213	0'39.213	226.416	0'35.685	0'35.685	265.357				0'34.352	0'34.352	263.415
20 ^a - 2	1'19.260	0'39.715	Robinson	1'19.114	0'39.901		1'13.475	0'37.790					1'12.278	0'37.926	
20 ^a - 3	1'59.776	0'40.516		1'59.627	0'40.513		1'51.266	0'37.791					1'50.334	0'38.056	
21 ^a - 1	0'39.664	0'39.664	222.223	0'38.908	0'38.908	225.942	0'35.298	0'35.298	264.706				0'33.945	0'33.945	268.657
21 ^a - 2	1'19.174	0'39.510	Robinson	1'18.683	0'39.775		1'13.270	0'37.972					1'11.794	0'37.849	
21 ^a - 3	1'59.570	0'40.396		1'59.320	0'40.637		1'51.159	0'37.889					1'50.129	0'38.335	



Autodromo di Monza

RACE 2

LAP ANALYSIS

02/10/2016

Number	15			17			20			25			27		
Lap	Lap Time	Partial	Speed	Lap Time	Partial	Speed	Lap Time	Partial	Speed	Lap Time	Partial	Speed	Lap Time	Partial	Speed
22 ^a - 1	0'39.624	0'39.624	223.141	0'38.953	0'38.953	225.470	0'35.421	0'35.421	264.706				0'34.785	0'34.785	242.153
22 ^a - 2	1'19.233	0'39.609	Robinson	1'18.807	0'39.854		1'13.211	0'37.790					1'12.392	0'37.607	
22 ^a - 3	1'59.918	0'40.685		1'59.358	0'40.551		1'51.146	0'37.935					1'50.258	0'37.866	
23 ^a - 1	0'39.399	0'39.399	224.067	0'39.054	0'39.054	225.470	0'35.277	0'35.277	264.706				0'34.829	0'34.829	244.344
23 ^a - 2	1'19.207	0'39.808	Robinson	1'18.602	0'39.548		1'13.458	0'38.181					1'12.713	0'37.884	
23 ^a - 3	1'59.736	0'40.529		1'59.137	0'40.535		1'51.682	0'38.224					1'50.979	0'38.266	
24 ^a - 1	0'39.573	0'39.573	223.141	0'39.069	0'39.069	225.470	0'35.499	0'35.499	263.415				0'34.809	0'34.809	262.136
24 ^a - 2	1'19.886	0'40.313	Robinson	1'18.845	0'39.776		1'13.955	0'38.456					1'12.589	0'37.780	
24 ^a - 3	2'01.191	0'41.305		2'00.068	0'41.223		1'52.807	0'38.852					1'50.552	0'37.963	
25 ^a - 1	0'39.660	0'39.660	221.312	0'39.875	0'39.875	225.470	0'35.135	0'35.135	266.010				0'34.512	0'34.512	256.533
25 ^a - 2	1'19.571	0'39.911	Robinson	1'19.700	0'39.825		1'13.653	0'38.518					1'12.496	0'37.984	
25 ^a - 3	2'00.439	0'40.868		2'00.429	0'40.729		1'51.480	0'37.827					1'51.053	0'38.557	
26 ^a - 1	0'39.538	0'39.538	223.603	0'39.411	0'39.411	225.942	0'35.360	0'35.360	266.010				0'35.939	0'35.939	243.793
26 ^a - 2	1'19.100	0'39.562	Robinson	1'19.253	0'39.842		1'13.060	0'37.700					1'15.351	0'39.412	
26 ^a - 3	2'00.096	0'40.996		2'00.389	0'41.136		1'51.600	0'38.540					1'54.743	0'39.392	
27 ^a - 1	0'40.128	0'40.128	222.223	0'38.954	0'38.954	225.942	0'35.845	0'35.845	264.059				0'35.954	0'35.954	240.535
27 ^a - 2	1'20.746	0'40.618	Robinson	1'18.780	0'39.826		1'13.668	0'37.823					1'15.016	0'39.062	
27 ^a - 3	2'01.897	0'41.151		1'59.612	0'40.832		1'51.351	0'37.683					1'54.370	0'39.354	
28 ^a - 1	0'39.955	0'39.955	223.603	0'38.989	0'38.989	225.470	0'35.186	0'35.186	265.357				0'36.105	0'36.105	236.324
28 ^a - 2	1'24.193	0'44.238	Robinson	1'19.052	0'40.063		1'13.130	0'37.944					1'15.371	0'39.266	
28 ^a - 3	2'05.142	0'40.949		1'59.976	0'40.924		1'51.215	0'38.085					1'55.531	0'40.160	
29 ^a - 1	0'39.977	0'39.977	224.067	0'38.800	0'38.800	226.416	0'35.292	0'35.292	266.010				0'36.048	0'36.048	246.576
29 ^a - 2	1'20.116	0'40.139	Robinson	1'19.038	0'40.238		1'12.980	0'37.688					1'15.728	0'39.680	
29 ^a - 3	2'00.768	0'40.652		1'59.719	0'40.681		1'50.859	0'37.879					1'55.452	0'39.724	
30 ^a - 1	0'39.570	0'39.570	223.603	0'39.000	0'39.000	225.942	0'35.256	0'35.256	265.357				0'36.014	0'36.014	247.707
30 ^a - 2	1'19.827	0'40.257	Robinson	1'18.840	0'39.840		1'12.662	0'37.406					1'15.416	0'39.402	
30 ^a - 3	2'00.610	0'40.783		1'59.389	0'40.549		1'50.106	0'37.444					1'56.322	0'40.906	
31 ^a - 1							0'35.067	0'35.067	265.357				0'35.621	0'35.621	262.136
31 ^a - 2							1'12.756	0'37.689					1'14.556	0'38.935	
31 ^a - 3							1'50.359	0'37.603					1'53.644	0'39.088	
32 ^a - 1							0'35.352	0'35.352	266.667				0'35.834	0'35.834	256.533
32 ^a - 2							3'34.663	2'59.311					1'15.186	0'39.352	
32 ^a - 3													1'54.593	0'39.407	

Ideal Lap	
0'39.075	0'39.075
1'18.443	0'39.368
1'58.620	0'40.177

Ideal Lap	
0'38.800	0'38.800
1'18.271	0'39.471
1'58.508	0'40.237

Ideal Lap	
0'35.067	0'35.067
1'12.473	0'37.406
1'49.917	0'37.444

Ideal Lap	
0'39.067	0'39.067
1'19.094	0'40.027
1'59.839	0'40.745

Ideal Lap	
0'33.784	0'33.784
1'10.985	0'37.201
1'48.225	0'37.240

Ideal Best Lap	
0'33.578	0'33.578
1'10.577	0'36.999
1'47.682	0'37.105



Autodromo di Monza

RACE 2

LAP ANALYSIS

02/10/2016

Number	29			46			61			63			66		
Lap	Lap Time	Partial	Speed	Lap Time	Partial	Speed	Lap Time	Partial	Speed	Lap Time	Partial	Speed	Lap Time	Partial	Speed
1 ^a - 1	0'49.000	0'49.000	187.501	0'43.556	0'43.556	175.610	0'42.241	0'42.241	203.390	0'43.212	0'43.212	198.166	0'46.066	0'46.066	209.709
1 ^a - 2	1'30.663	0'41.663	Marateotto	1'23.287	0'39.731	Ferguson	1'21.646	0'39.405		1'23.718	0'40.506		1'26.056	0'39.990	Ellis
1 ^a - 3	2'12.125	0'41.462		2'02.010	0'38.723		2'00.737	0'39.091		2'03.128	0'39.410		2'06.094	0'40.038	
2 ^a - 1	0'40.760	0'40.760	229.788	0'35.449	0'35.449	241.072	0'35.481	0'35.481	256.533	0'35.216	0'35.216	243.244	0'38.779	0'38.779	226.891
2 ^a - 2	1'21.724	0'40.964	Marateotto	1'13.911	0'38.462	Ferguson	1'14.301	0'38.820		1'13.924	0'38.708		1'18.196	0'39.417	Ellis
2 ^a - 3	2'02.864	0'41.140		1'52.118	0'38.207		1'53.058	0'38.757		1'53.109	0'39.185		1'58.750	0'40.554	
3 ^a - 1	0'39.558	0'39.558	227.369	0'35.722	0'35.722	224.067	0'35.872	0'35.872	243.244	0'35.389	0'35.389	234.783	0'38.746	0'38.746	227.369
3 ^a - 2	1'20.573	0'41.015	Marateotto	1'14.275	0'38.553	Ferguson	1'14.409	0'38.537		1'14.036	0'38.647		1'17.832	0'39.086	Ellis
3 ^a - 3	2'01.235	0'40.662		1'59.855	0'45.580	PIT	1'52.925	0'38.516		1'52.908	0'38.872		1'57.679	0'39.847	
4 ^a - 1	0'38.982	0'38.982	228.330	0'55.273	0'55.273	219.067	0'35.772	0'35.772	236.324	0'34.837	0'34.837	251.749	0'39.254	0'39.254	226.891
4 ^a - 2	1'19.494	0'40.512	Marateotto	1'34.641	0'39.368	Ferguson	1'13.990	0'38.218		1'12.942	0'38.105		1'18.851	0'39.597	Ellis
4 ^a - 3	2'00.229	0'40.735		2'12.866	0'38.225		1'52.441	0'38.451		1'51.363	0'38.421		1'58.637	0'39.786	
5 ^a - 1	0'39.189	0'39.189	227.849	0'35.201	0'35.201	243.244	0'35.333	0'35.333	262.136	0'34.462	0'34.462	249.423	0'39.085	0'39.085	228.330
5 ^a - 2	1'19.526	0'40.337	Marateotto	1'13.402	0'38.201	Ferguson	1'13.656	0'38.323		1'12.750	0'38.288		1'19.754	0'40.669	Ellis
5 ^a - 3	2'00.022	0'40.496		1'52.116	0'38.714		1'51.840	0'38.184		1'51.236	0'38.486		2'00.236	0'40.482	
6 ^a - 1	0'39.366	0'39.366	226.891	0'35.173	0'35.173	257.757	0'35.872	0'35.872	264.059	0'35.270	0'35.270	244.898	0'38.533	0'38.533	227.849
6 ^a - 2	1'19.698	0'40.332	Marateotto	1'13.754	0'38.581	Ferguson	1'13.882	0'38.010		1'13.682	0'38.412		1'17.764	0'39.231	Ellis
6 ^a - 3	2'00.220	0'40.522		1'51.940	0'38.186		1'52.605	0'38.723		1'52.152	0'38.470		1'57.440	0'39.676	
7 ^a - 1	0'39.174	0'39.174	226.416	0'35.514	0'35.514	248.276	0'36.562	0'36.562	265.357	0'35.624	0'35.624	263.415	0'38.557	0'38.557	227.849
7 ^a - 2	1'19.242	0'40.068	Marateotto	1'14.318	0'38.804	Ferguson	1'15.168	0'38.606		1'13.775	0'38.151		1'17.655	0'39.098	Ellis
7 ^a - 3	1'59.854	0'40.612		1'52.563	0'38.245		1'53.726	0'38.558		1'52.098	0'38.323		1'57.276	0'39.621	
8 ^a - 1	0'39.143	0'39.143	226.416	0'35.002	0'35.002	257.757	0'35.656	0'35.656	260.241	0'35.013	0'35.013	255.925	0'38.531	0'38.531	227.369
8 ^a - 2	1'19.044	0'39.901	Marateotto	1'13.118	0'38.116	Ferguson	1'13.422	0'37.766		1'12.992	0'37.979		1'17.594	0'39.063	Ellis
8 ^a - 3	2'04.698	0'45.654	PIT	1'51.557	0'38.439		1'51.543	0'38.121		1'51.638	0'38.646		1'57.227	0'39.633	
9 ^a - 1	0'58.745	0'58.745	184.932	0'35.504	0'35.504	247.707	0'35.421	0'35.421	259.616	0'34.467	0'34.467	271.357	0'38.490	0'38.490	226.891
9 ^a - 2	1'40.989	0'42.244	Marateotto	1'14.356	0'38.852	Ferguson	1'13.516	0'38.095		1'12.716	0'38.249		1'17.492	0'39.002	Ellis
9 ^a - 3	2'22.045	0'41.056		1'53.215	0'38.859		1'51.789	0'38.273		1'51.542	0'38.826		1'57.174	0'39.682	
10 ^a - 1	0'39.201	0'39.201	226.416	0'35.245	0'35.245	257.143	0'37.954	0'37.954	264.706	0'34.501	0'34.501	267.991	0'38.435	0'38.435	227.849
10 ^a - 2	1'19.595	0'40.394	Marateotto	1'13.592	0'38.347	Ferguson	1'16.243	0'38.289		1'12.534	0'38.033		1'17.670	0'39.235	Ellis
10 ^a - 3	2'00.345	0'40.750		1'52.221	0'38.629		1'54.521	0'38.278		1'50.822	0'38.288		1'57.343	0'39.673	
11 ^a - 1	0'38.974	0'38.974	228.330	0'35.608	0'35.608	247.140	0'35.383	0'35.383	260.870	0'34.665	0'34.665	266.010	0'38.528	0'38.528	227.849
11 ^a - 2	1'19.698	0'40.724	Marateotto	1'14.017	0'38.409	Ferguson	1'13.632	0'38.249		1'12.962	0'38.297		1'17.409	0'38.881	Ellis
11 ^a - 3	2'00.532	0'40.834		1'52.848	0'38.831		1'51.861	0'38.229		1'52.015	0'39.053		1'57.066	0'39.657	
12 ^a - 1	0'39.085	0'39.085	227.849	0'35.436	0'35.436	256.533	0'35.355	0'35.355	262.774	0'34.527	0'34.527	267.991	0'38.494	0'38.494	227.369
12 ^a - 2	1'19.409	0'40.324	Marateotto	1'13.780	0'38.344	Ferguson	1'14.276	0'38.921		1'12.792	0'38.265		1'17.502	0'39.008	Ellis
12 ^a - 3	1'59.861	0'40.452		1'52.488	0'38.708		1'52.283	0'38.007		1'51.729	0'38.937		1'57.146	0'39.644	
13 ^a - 1	0'39.196	0'39.196	226.416	0'35.393	0'35.393	264.059	0'35.480	0'35.480	265.357	0'34.573	0'34.573	258.374	0'38.563	0'38.563	227.369
13 ^a - 2	1'19.285	0'40.089	Marateotto	1'13.805	0'38.412	Ferguson	1'14.666	0'39.186		1'12.723	0'38.150		1'17.913	0'39.350	Ellis
13 ^a - 3	1'59.632	0'40.347		2'39.756	1'25.951	PIT	1'53.266	0'38.600		1'51.364	0'38.641		1'57.725	0'39.812	
14 ^a - 1	0'39.315	0'39.315	225.942				0'35.483	0'35.483	257.143	0'34.493	0'34.493	266.010	0'38.541	0'38.541	227.369
14 ^a - 2	1'19.534	0'40.219	Marateotto				1'13.532	0'38.049		1'12.711	0'38.218		1'18.035	0'39.494	Ellis
14 ^a - 3	1'59.949	0'40.415					1'51.837	0'38.305		1'51.787	0'39.076		1'57.763	0'39.728	
15 ^a - 1	0'39.204	0'39.204	225.470				0'35.615	0'35.615	253.522	0'35.037	0'35.037	257.757	0'38.481	0'38.481	227.849
15 ^a - 2	1'18.784	0'39.580	Marateotto				1'13.941	0'38.326		1'14.172	0'39.135		1'17.496	0'39.015	Ellis
15 ^a - 3	1'59.226	0'40.442					1'59.022	0'45.081	PIT	1'52.926	0'38.754		1'57.142	0'39.646	
16 ^a - 1	0'39.111	0'39.111	225.942				2'25.795	2'25.795	205.324	0'34.408	0'34.408	263.415	0'39.857	0'39.857	227.849
16 ^a - 2	1'19.037	0'39.926	Marateotto				3'04.685	0'38.890		1'14.186	0'39.778		1'19.021	0'39.164	Ellis
16 ^a - 3	2'05.388	0'46.351	PIT				3'43.078	0'38.393		1'53.101	0'38.915		1'58.783	0'39.762	
17 ^a - 1	2'18.406	2'18.406	184.932				0'35.840	0'35.840	220.859	0'34.773	0'34.773	254.118	0'38.396	0'38.396	227.849
17 ^a - 2	2'58.900	0'40.494	Cencetti				1'13.692	0'37.852		1'13.170	0'38.397		1'17.243	0'38.847	Ellis
17 ^a - 3	3'38.877	0'39.977					1'52.096	0'38.404		1'51.601	0'38.431		2'03.141	0'45.898	PIT
18 ^a - 1	0'39.144	0'39.144	227.369				0'35.156	0'35.156	263.415	0'34.578	0'34.578	269.327	2'04.078	2'04.078	188.154
18 ^a - 2	1'18.908	0'39.764	Cencetti				1'12.866	0'37.710		1'13.146	0'38.568		2'45.335	0'41.257	Caudwell
18 ^a - 3	1'58.599	0'39.691					1'50.744	0'37.878		2'01.446	0'48.300	PIT	3'26.010	0'40.675	
19 ^a - 1	0'38.895	0'38.895	227.369				0'35.144	0'35.144	251.163	2'08.009	2'08.009	224.067	0'39.084	0'39.084	227.369
19 ^a - 2	1'18.289	0'39.394	Cencetti				1'12.659	0'37.515		2'46.526	0'38.517		1'19.026	0'39.942	Caudwell
19 ^a - 3	1'57.861	0'39.572					1'50.370	0'37.711		3'25.029	0'38.503		1'59.653	0'40.627	
20 ^a - 1	0'39.800	0'39.800	225.000				0'34.939	0'34.939	264.706	0'34.852	0'34.852	255.925	0'39.026	0'39.026	227.369
20 ^a - 2	1'19.108	0'39.308	Cencetti				1'12.574	0'37.635		1'14.750	0'39.898		1'19.143	0'40.117	Caudwell
20 ^a - 3	1'58.753	0'39.645					1'50.383	0'37.809		1'53.613	0'38.863		1'59.545	0'40.402</	



Autodromo di Monza

RACE 2

LAP ANALYSIS

02/10/2016

Number	29			46			61			63			66		
Lap	Lap Time	Partial	Speed	Lap Time	Partial	Speed	Lap Time	Partial	Speed	Lap Time	Partial	Speed	Lap Time	Partial	Speed
22 ^a - 1	0'38.901	0'38.901	228.814				0'34.964	0'34.964	267.327	0'34.749	0'34.749	247.707	0'38.747	0'38.747	227.849
22 ^a - 2	1'18.186	0'39.285	Cencetti				1'12.760	0'37.796		1'13.547	0'38.798		1'18.443	0'39.696	Caudwell
22 ^a - 3	1'57.853	0'39.667					1'50.420	0'37.660		1'52.186	0'38.639		1'58.812	0'40.369	
23 ^a - 1	0'38.670	0'38.670	227.849				0'34.979	0'34.979	266.667	0'34.909	0'34.909	257.143	0'38.894	0'38.894	228.330
23 ^a - 2	1'18.397	0'39.727	Cencetti				1'12.606	0'37.627		1'13.178	0'38.269		1'18.515	0'39.621	Caudwell
23 ^a - 3	1'58.480	0'40.083					1'50.324	0'37.718		1'51.635	0'38.457		1'59.203	0'40.688	
24 ^a - 1	0'38.825	0'38.825	228.814				0'34.920	0'34.920	266.667	0'34.615	0'34.615	266.010	0'38.904	0'38.904	227.849
24 ^a - 2	1'18.231	0'39.406	Cencetti				1'12.521	0'37.601		1'13.151	0'38.536		1'18.778	0'39.874	Caudwell
24 ^a - 3	1'58.562	0'40.331					1'51.015	0'38.494		1'51.833	0'38.682		1'59.255	0'40.477	
25 ^a - 1	0'39.202	0'39.202	229.300				0'34.844	0'34.844	267.327	0'34.852	0'34.852	270.000	0'38.701	0'38.701	227.369
25 ^a - 2	1'18.759	0'39.557	Cencetti				1'12.316	0'37.472		1'13.474	0'38.622		1'18.446	0'39.745	Caudwell
25 ^a - 3	1'58.410	0'39.651					1'50.068	0'37.752		1'52.304	0'38.830		1'58.724	0'40.278	
26 ^a - 1	0'38.643	0'38.643	228.330				0'34.880	0'34.880	267.327	0'34.746	0'34.746	253.522	0'39.082	0'39.082	227.849
26 ^a - 2	1'17.861	0'39.218	Cencetti				1'12.318	0'37.438		1'13.417	0'38.671		1'19.062	0'39.980	Caudwell
26 ^a - 3	1'57.303	0'39.442					1'49.895	0'37.577		1'52.126	0'38.709		1'59.577	0'40.515	
27 ^a - 1	0'39.400	0'39.400	228.330				0'35.409	0'35.409	255.320	1'06.688	1'06.688	242.153	0'38.716	0'38.716	227.849
27 ^a - 2	1'19.074	0'39.674	Cencetti				1'13.076	0'37.667		1'53.094	0'46.406		1'18.712	0'39.996	Caudwell
27 ^a - 3	1'59.361	0'40.287					1'51.052	0'37.976		2'39.072	0'45.978		1'59.446	0'40.734	
28 ^a - 1	0'38.636	0'38.636	227.849				0'34.991	0'34.991	265.357	0'42.560	0'42.560	204.546	0'39.031	0'39.031	227.849
28 ^a - 2	1'17.823	0'39.187	Cencetti				1'12.511	0'37.520		1'26.739	0'44.179		1'18.972	0'39.941	Caudwell
28 ^a - 3	1'57.380	0'39.557					1'50.310	0'37.799		2'11.552	0'44.813		1'59.525	0'40.553	
29 ^a - 1	0'38.740	0'38.740	227.369				0'35.043	0'35.043	262.136	0'42.012	0'42.012	214.286	0'39.116	0'39.116	227.849
29 ^a - 2	1'17.834	0'39.094	Cencetti				1'12.392	0'37.349		1'25.996	0'43.984		1'19.237	0'40.121	Caudwell
29 ^a - 3	1'57.400	0'39.566					1'49.976	0'37.584		2'11.203	0'45.207		1'59.752	0'40.515	
30 ^a - 1	0'38.983	0'38.983	227.369				0'34.925	0'34.925	266.667	0'41.564	0'41.564	212.181	0'38.823	0'38.823	227.369
30 ^a - 2	1'18.313	0'39.330	Cencetti				1'12.185	0'37.260		1'28.216	0'46.652		1'19.473	0'40.650	Caudwell
30 ^a - 3	1'57.927	0'39.614					1'49.752	0'37.567		2'13.023	0'44.807		2'00.107	0'40.634	
31 ^a - 1							0'34.998	0'34.998	267.327	0'41.901	0'41.901	205.324	0'39.027	0'39.027	226.891
31 ^a - 2							1'12.421	0'37.423		1'26.064	0'44.163		1'19.360	0'40.333	Caudwell
31 ^a - 3							1'49.891	0'37.470		2'09.998	0'43.934		2'00.144	0'40.784	
32 ^a - 1							0'34.973	0'34.973	263.415						
32 ^a - 2							1'12.463	0'37.490							
32 ^a - 3							1'50.294	0'37.831							

Ideal Lap	
0'38.636	0'38.636
1'17.730	0'39.094
1'57.172	0'39.442

Ideal Lap	
0'35.002	0'35.002
1'13.118	0'38.116
1'51.304	0'38.186

Ideal Lap	
0'34.844	0'34.844
1'12.104	0'37.260
1'49.574	0'37.470

Ideal Lap	
0'34.408	0'34.408
1'12.387	0'37.979
1'50.675	0'38.288

Ideal Lap	
0'38.396	0'38.396
1'17.243	0'38.847
1'56.864	0'39.621

Ideal Best Lap	
0'33.578	0'33.578
1'10.577	0'36.999
1'47.682	0'37.105



Autodromo di Monza

RACE 2

LAP ANALYSIS

02/10/2016

Number	69			99		
Lap	Lap Time	Partial	Speed	Lap Time	Partial	Speed
1 ^a - 1	0'40.023	0'40.023	208.093	0'42.560	0'42.560	185.887
1 ^a - 2	1'18.525	0'38.502	Winslow	1'21.785	0'39.225	
1 ^a - 3	1'56.674	0'38.149		2'00.116	0'38.331	
2 ^a - 1	0'34.190	0'34.190	252.337	0'34.524	0'34.524	237.886
2 ^a - 2	1'12.304	0'38.114	Winslow	1'12.459	0'37.935	
2 ^a - 3	1'50.383	0'38.079		2'21.162	1'08.703	
3 ^a - 1	0'34.103	0'34.103	259.616	0'35.545	0'35.545	238.939
3 ^a - 2	1'11.969	0'37.866	Winslow	1'14.283	0'38.738	
3 ^a - 3	1'49.280	0'37.311		1'52.524	0'38.241	
4 ^a - 1	0'34.000	0'34.000	260.870	0'35.545	0'35.545	218.182
4 ^a - 2	1'11.347	0'37.347	Winslow	1'13.650	0'38.105	
4 ^a - 3	1'48.763	0'37.416		1'51.074	0'37.424	
5 ^a - 1	0'35.003	0'35.003	260.241	0'34.158	0'34.158	262.136
5 ^a - 2	1'14.303	0'39.300	Winslow	1'12.049	0'37.891	
5 ^a - 3	1'52.625	0'38.322		1'49.785	0'37.736	
6 ^a - 1	0'34.096	0'34.096	265.357	0'36.312	0'36.312	267.327
6 ^a - 2	1'11.969	0'37.873	Winslow	1'13.915	0'37.603	
6 ^a - 3	1'49.804	0'37.835		1'51.368	0'37.453	
7 ^a - 1	0'33.943	0'33.943	274.112	0'34.199	0'34.199	247.140
7 ^a - 2	1'11.304	0'37.361	Winslow	1'11.845	0'37.646	
7 ^a - 3	1'48.724	0'37.420		1'49.248	0'37.403	
8 ^a - 1	0'34.009	0'34.009	269.327	0'33.952	0'33.952	268.657
8 ^a - 2	1'11.375	0'37.366	Winslow	1'11.616	0'37.664	
8 ^a - 3	1'48.766	0'37.391		1'48.936	0'37.320	
9 ^a - 1	0'33.976	0'33.976	262.136	0'34.301	0'34.301	257.757
9 ^a - 2	1'11.618	0'37.642	Winslow	1'11.964	0'37.663	
9 ^a - 3	1'48.996	0'37.378		1'49.246	0'37.282	
10 ^a - 1	0'34.016	0'34.016	272.041	0'34.049	0'34.049	263.415
10 ^a - 2	1'11.824	0'37.808	Winslow	1'11.515	0'37.466	
10 ^a - 3	1'49.336	0'37.512		1'49.165	0'37.650	
11 ^a - 1	0'34.261	0'34.261	265.357	0'34.016	0'34.016	260.241
11 ^a - 2	1'11.956	0'37.695	Winslow	1'11.684	0'37.668	
11 ^a - 3	1'49.980	0'38.024		1'49.342	0'37.658	
12 ^a - 1	0'34.119	0'34.119	270.677	0'34.087	0'34.087	256.533
12 ^a - 2	1'11.692	0'37.573	Winslow	1'11.686	0'37.599	
12 ^a - 3	1'50.709	0'39.017		1'49.261	0'37.575	
13 ^a - 1	0'34.586	0'34.586	265.357	0'33.578	0'33.578	262.774
13 ^a - 2	1'12.040	0'37.454	Winslow	1'11.687	0'38.109	
13 ^a - 3	1'49.347	0'37.307		1'49.399	0'37.712	
14 ^a - 1	0'34.211	0'34.211	266.010	0'34.099	0'34.099	254.118
14 ^a - 2	1'11.708	0'37.497	Winslow	1'11.374	0'37.275	
14 ^a - 3	1'49.194	0'37.486		1'49.273	0'37.899	
15 ^a - 1	0'34.659	0'34.659	235.808	0'34.066	0'34.066	252.928
15 ^a - 2	1'12.621	0'37.962	Winslow	1'12.534	0'38.468	
15 ^a - 3	1'57.966	0'45.345	PIT	1'50.626	0'38.092	
16 ^a - 1	2'05.400	2'05.400	192.514	0'33.853	0'33.853	258.374
16 ^a - 2	2'45.027	0'39.627	Corbett	1'11.984	0'38.131	
16 ^a - 3	3'24.442	0'39.415		1'50.263	0'38.279	
17 ^a - 1	0'35.794	0'35.794	232.259	0'34.158	0'34.158	245.455
17 ^a - 2	1'15.168	0'39.374	Corbett	1'12.057	0'37.899	
17 ^a - 3	1'54.131	0'38.963		1'56.546	0'44.489	PIT
18 ^a - 1	0'35.440	0'35.440	221.766	2'18.138	2'18.138	195.653
18 ^a - 2	1'14.191	0'38.751	Corbett	2'56.383	0'38.245	
18 ^a - 3	1'53.304	0'39.113		3'34.249	0'37.866	
19 ^a - 1	0'35.007	0'35.007	246.014	0'34.682	0'34.682	260.241
19 ^a - 2	1'13.900	0'38.893	Corbett	1'12.357	0'37.675	
19 ^a - 3	1'52.977	0'39.077		1'50.216	0'37.859	
20 ^a - 1	0'34.886	0'34.886	241.611	0'34.160	0'34.160	255.925
20 ^a - 2	1'13.264	0'38.378	Corbett	1'12.364	0'38.204	
20 ^a - 3	1'51.893	0'38.629		1'50.598	0'38.234	
21 ^a - 1	0'34.687	0'34.687	249.423	0'34.170	0'34.170	262.136
21 ^a - 2	1'13.787	0'39.100	Corbett	1'12.062	0'37.892	
21 ^a - 3	1'56.858	0'43.071		1'49.671	0'37.609	



Autodromo di Monza

RACE 2

LAP ANALYSIS

02/10/2016

Number	69			99		
Lap	Lap Time	Partial	Speed	Lap Time	Partial	Speed
22 ^a - 1	0'35.120	0'35.120	251.163	0'34.140	0'34.140	254.118
22 ^a - 2	1'13.638	0'38.518	Corbett	1'11.956	0'37.816	
22 ^a - 3	1'52.201	0'38.563		1'49.352	0'37.396	
23 ^a - 1	0'34.615	0'34.615	265.357	0'34.287	0'34.287	260.870
23 ^a - 2	1'13.246	0'38.631	Corbett	1'11.773	0'37.486	
23 ^a - 3	1'52.515	0'39.269		1'49.520	0'37.747	
24 ^a - 1	0'35.215	0'35.215	254.118	0'34.295	0'34.295	243.244
24 ^a - 2	1'14.783	0'39.568	Corbett	1'12.640	0'38.345	
24 ^a - 3	1'53.881	0'39.098		1'50.091	0'37.451	
25 ^a - 1	0'34.859	0'34.859	253.522	0'34.012	0'34.012	264.059
25 ^a - 2	1'53.289	1'18.430	Corbett	1'11.914	0'37.902	
25 ^a - 3				1'49.861	0'37.947	
26 ^a - 1				0'33.772	0'33.772	252.928
26 ^a - 2				1'11.560	0'37.788	
26 ^a - 3				1'49.221	0'37.661	
27 ^a - 1				1'31.097	1'31.097	262.774
27 ^a - 2				2'36.321	1'05.224	
27 ^a - 3				3'58.640	1'22.319	PIT
28 ^a - 1						
28 ^a - 2						
28 ^a - 3						
29 ^a - 1						
29 ^a - 2						
29 ^a - 3						
30 ^a - 1						
30 ^a - 2						
30 ^a - 3						
31 ^a - 1						
31 ^a - 2						
31 ^a - 3						
32 ^a - 1						
32 ^a - 2						
32 ^a - 3						

Ideal Lap	
0'33.943	0'33.943
1'11.290	0'37.347
1'48.597	0'37.307

Ideal Lap	
0'33.578	0'33.578
1'10.853	0'37.275
1'48.135	0'37.282

Ideal Best Lap	
0'33.578	0'33.578
1'10.577	0'36.999
1'47.682	0'37.105



Autodromo di Monza

RACE 2

BEST SECTORS RESULTS

02/10/2016

Sector - 1		Sector - 2		Sector - 3		Ideal Lap vs Best Lap					
Ord.	Nº Driver	Time	Nº Driver	Time	Nº Driver	Time	Ord.	Nº Driver	Ideal Lap	Best Lap	Ord.
1	99 Jamie Constable	#####	2 Wells - Littlejohn	#####	2 Wells - Littlejohn	#####	1	99 Jamie Constable	1'48.135	1'48.936	3
2	27 Mike Cantillon	#####	27 Mike Cantillon	#####	27 Mike Cantillon	#####	2	27 Mike Cantillon	1'48.225	1'48.673	1
3	69 Corbett - Winslow	#####	61 Manhal Allos	#####	99 Jamie Constable	#####	3	69 Corbett - Winslow	1'48.597	1'48.724	2
4	63 Jim Booth	#####	99 Jamie Constable	#####	69 Corbett - Winslow	#####	4	2 Wells - Littlejohn	1'49.145	1'49.328	4
5	61 Manhal Allos	#####	69 Corbett - Winslow	#####	20 Alain Costa	#####	5	61 Manhal Allos	1'49.574	1'49.752	5
6	46 Ferguson - Ferguson	#####	20 Alain Costa	#####	61 Manhal Allos	#####	6	20 Alain Costa	1'49.917	1'50.106	6
7	2 Wells - Littlejohn	#####	63 Jim Booth	#####	46 Ferguson - Ferguson	#####	7	63 Jim Booth	1'50.675	1'50.822	7
8	20 Alain Costa	#####	46 Ferguson - Ferguson	#####	63 Jim Booth	#####	8	46 Ferguson - Ferguson	1'51.304	1'51.557	8
9	12 Paddon - Winslow	#####	66 Ellis - Caudwell	#####	3 Dona - Moseley	#####	9	3 Dona - Moseley	1'56.643	1'56.797	9
10	3 Dona - Moseley	#####	3 Dona - Moseley	#####	12 Paddon - Winslow	#####	10	66 Ellis - Caudwell	1'56.864	1'57.066	10
11	66 Ellis - Caudwell	#####	29 Marateotto - Cencetti	#####	29 Marateotto - Cencetti	#####	11	12 Paddon - Winslow	1'56.951	1'57.169	11
12	29 Marateotto - Cencetti	#####	12 Paddon - Winslow	#####	66 Ellis - Caudwell	#####	12	29 Marateotto - Cencetti	1'57.172	1'57.303	12
13	17 Jani Hjerpe	#####	15 Manchester - Robinson	#####	15 Manchester - Robinson	#####	13	17 Jani Hjerpe	1'58.508	1'58.769	13
14	9 Konstantin Gugkaev	#####	17 Jani Hjerpe	#####	17 Jani Hjerpe	#####	14	15 Manchester - Robinson	1'58.620	1'58.810	14
15	25 Verity - Kinsella	#####	10 John Caudwell	#####	10 John Caudwell	#####	15	10 John Caudwell	1'59.482	1'59.775	15
16	15 Manchester - Robinson	#####	25 Verity - Kinsella	#####	25 Verity - Kinsella	#####	16	25 Verity - Kinsella	1'59.839	1'59.839	16
17	10 John Caudwell	#####	9 Konstantin Gugkaev	#####	9 Konstantin Gugkaev	#####	17	9 Konstantin Gugkaev	2'00.733	2'01.171	17



Autodromo di Monza

RACE 2

BEST TOP SPEEDS

02/10/2016

Ord.	N°	Entrant	Driver	Nat.	Driver 2	Nat.	Car Type	Cat.	Cla.	Top 1		Top 2		Top 3		Top 4		Top 5		Avg.
										Km/h	Lap	Km/h	Lap	Km/h	Lap	Km/h	Lap	Km/h	Lap	
1	69	Monza Garage	John Corbett	AUS	James Winslow	GBR	RXC Spyder Turbo	M	1°	274.112	7	272.040	10	270.677	12	269.327	8	266.010	14	270.433
2	63	Works	Jim Booth	USA			RXC Spyder Turbo	M	2°	271.357	9	270.000	25	269.327	18	267.990	10	267.990	12	269.333
3	27	Works	Mike Cantillon	GBR			RXC Spyder Turbo	M	3°	269.327	18	268.657	21	266.667	12	266.667	15	264.706	13	267.205
4	99	Works	Jamie Constable	GBR			RXC Spyder Turbo	M	4°	268.657	8	267.327	6	264.059	25	263.415	10	262.774	13	265.246
5	2	Nielsen	Tony Wells	GBR	James Littlejohn	GBR	SR8 RX	M	5°	267.327	12	266.667	30	266.667	10	266.667	19	266.667	25	266.799
6	20	Monza Garage	Alain Costa	MCO			SR8 RX	M	6°	267.327	15	267.327	16	266.667	32	266.667	12	266.667	14	266.931
7	61	RAW Motorsport	Manhal Allos	GBR			SR8 RX	M	7°	267.327	22	267.327	25	267.327	26	267.327	31	266.667	21	267.195
8	46	RAW Motorsport	Jeremy Ferguson	GBR	Andrew Ferguson	GBR	RXC Spyder Turbo	M	8°	264.059	13	257.757	6	257.757	8	257.143	10	256.532	12	258.649
9	12	Works	Peter Paddon	AUS	James Winslow	GBR	SR3 RSX	S	1°	234.273	18	234.273	20	234.273	5	233.766	16	233.766	27	234.070
10	3	Nielsen	Riccardo Dona	ITA	Stuart Moseley	GBR	SR3 RSX	S	2°	233.261	3	232.759	2	232.258	6	231.760	16	231.263	17	232.260
11	9	Works	Konstantin Gugkaev	RUS			SR3 RSX	S	3°	231.263	12	231.263	4	230.769	11	230.769	26	230.769	3	230.967
12	25	360 Racing	Martin Verity	GBR	Austin Kinsella	GBR	SR3 RSX	S	4°	230.769	4	230.277	5	224.532	2	204.934	3	175.041	1	213.111
13	29	RAW Motorsport	Marcello Marateotto	RUS	Marco Cencetti	RUS	SR3 RSX	S	5°	229.787	2	229.299	25	228.814	22	228.814	24	228.330	11	229.009
14	66	Nielsen	Bradley Ellis	GBR	Brian Caudwell	GBR	SR3 RSX	S	6°	228.330	5	228.330	21	228.330	23	227.848	24	227.848	27	228.137
15	10	Nielsen	John Caudwell	GBR			SR3 RSX	S	7°	226.891	3	226.415	16	226.415	28	226.415	5	226.415	4	226.510
16	17	Nielsen	Jani Hjerpe	FIN			SR3 RSX	S	8°	226.891	18	226.415	29	226.415	4	226.415	5	226.415	3	226.510
17	15	Nielsen	Jack Manchester	GBR	James Robinson	GBR	SR3 RSX	S	9°	226.415	18	225.941	16	225.941	6	225.941	5	225.941	11	226.036





Autodromo di Monza

RACE 2

FASTEST LAP SEQUENCE

02/10/2016

<u>Time of Day</u>	<u>Session Time</u>	<u>N°</u>	<u>Entrant</u>	<u>Driver</u>	<u>Nat.</u>	<u>Driver 2</u>	<u>Nat.</u>	<u>Car Type</u>	<u>Cat.</u>	<u>Time</u>	<u>Km/h</u>	<u>Lap</u>
11:50'49.684	1'56.674	69	Monza Garage	John Corbett	AUS	James Winslow	GBR	RXC Spyder Turbo	M	1'56.674	178.744	1
11:52'40.097	3'47.057	69	Monza Garage	John Corbett	AUS	James Winslow	GBR	RXC Spyder Turbo	M	1'50.383	188.931	2
11:54'29.353	5'36.337	69	Monza Garage	John Corbett	AUS	James Winslow	GBR	RXC Spyder Turbo	M	1'49.280	190.838	3
11:56'18.083	1'10.801	69	Monza Garage	John Corbett	AUS	James Winslow	GBR	RXC Spyder Turbo	M	1'48.763	191.745	4
12:01'49.219	6'41.954	69	Monza Garage	John Corbett	AUS	James Winslow	GBR	RXC Spyder Turbo	M	1'48.724	191.814	7
12:01'50.224	6'42.916	27	Works	Mike Cantillon	GBR			RXC Spyder Turbo	M	1'48.673	191.904	7



Autodromo di Monza

RACE 2

EVENT MAXIMUM SPEED

02/10/2016

Ord.	Nº	Entrant	Driver	Nat.	Driver 2	Nat.	Car Type	Cat.	Cl.	Km/h	Lap	Session
1	27	Works	Mike Cantillon	GBR			RXC Spyder Turbo	M	1º	289.545	6	Qualifying 1
2	63	Works	Jim Booth	USA			RXC Spyder Turbo	M	2º	276.924	8	Qualifying 1
3	99	Works	Jamie Constable	GBR			RXC Spyder Turbo	M	3º	274.810	13	Free Practice 2
4	69	Monza Garage	John Corbett	AUS	James Winslow	GBR	RXC Spyder Turbo	M	4º	274.112	7	RACE 2
5	61	RAW Motorsport	Manhal Allos	GBR			SR8 RX	M	5º	272.041	9	Qualifying 1
6	46	RAW Motorsport	Jeremy Ferguson	GBR	Andrew Ferguson	GBR	RXC Spyder Turbo	M	6º	271.357	8	Qualifying 1
7	20	Monza Garage	Alain Costa	MCO			SR8 RX	M	7º	268.657	5	RACE 1
8	2	Nielsen	Tony Wells	GBR	James Littlejohn	GBR	SR8 RX	M	8º	267.991	28	RACE 1
9	12	Works	Peter Paddon	AUS	James Winslow	GBR	SR3 RSX	S	1º	235.295	20	RACE 1
10	3	Nielsen	Riccardo Dona	ITA	Stuart Moseley	GBR	SR3 RSX	S	2º	234.274	2	RACE 1
11	9	Works	Konstantin Gugkaev	RUS			SR3 RSX	S	3º	234.274	3	Free Practice 2
12	29	RAW Motorsport	Marcello Marateotto	RUS	Marco Cencetti	RUS	SR3 RSX	S	4º	231.760	2	RACE 1
13	25	360 Racing	Martin Verity	GBR	Austin Kinsella	GBR	SR3 RSX	S	5º	231.264	11	RACE 1
14	36	XXX	XXX	XXX	XXX	XXX	XXX	XXX	1º	229.788	11	Free Practice 2
15	17	Nielsen	Jani Hjerpe	FIN			SR3 RSX	S	6º	229.300	2	RACE 1
16	66	Nielsen	Bradley Ellis	GBR	Brian Caudwell	GBR	SR3 RSX	S	7º	229.300	2	RACE 1
17	10	Nielsen	John Caudwell	GBR			SR3 RSX	S	8º	228.330	2	RACE 1
18	15	Nielsen	Jack Manchester	GBR	James Robinson	GBR	SR3 RSX	S	9º	227.849	8	Qualifying 1



Autodromo di Monza

RACE 2

LAP CHART

02/10/2016

Order	Start	GAP / LT	1 ^a	GAP / LT	2 ^a	GAP / LT	3 ^a	GAP / LT	4 ^a	GAP / LT	5 ^a	GAP / LT	6 ^a	GAP / LT	7 ^a	GAP / LT	8 ^a	GAP / LT	9 ^a	GAP / LT	10 ^a	GAP / LT	11 ^a	GAP / LT	12 ^a	GAP / LT	13 ^a	GAP / LT	14 ^a	GAP / LT	15 ^a	GAP / LT	16 ^a	GAP / LT	
1 ^o	2	2'00.673	69	1'56.674	69	1'50.383	69	1'49.28	69	1'48.763	69	1'52.625	69	1'49.804	69	1'48.724	69	1'48.766	69	1'48.996	69	1'49.336	69	1'49.98	69	1'50.709	69	1'49.347	69	1'49.194	27	1'49.574	27	1'55.649	
2 ^o	69	2'06.739	2	1'776 1'58.45	27	1'50.884	27	1'50.441	27	1'49.639	27	1'49.734	27	1'49.112	27	1'48.673	27	1'48.673	27	1'48.691	27	1'49.282	27	1'49.798	27	1'50.685	27	1'49.78	27	1'49.736	2	1'49.669	2	1'50.143	
3 ^o	27	3'378 2'04.051	27	2'058 1'58.732	2	1'52.399	2	1'50.428	2	1'50.166	2	1'49.859	2	1'49.603	2	1'49.688	2	1'49.537	2	1'49.53	2	1'50.174	2	1'49.713	2	1'50.305	2	1'49.845	69	1'57.966	99	1'50.263			
4 ^o	20	3'434 2'04.107	99	3'442 2'00.116	61	1'53.058	61	1'52.925	61	1'52.441	61	1'51.84	61	1'52.605	63	1'52.098	63	1'51.638	63	1'51.542	63	1'50.822	63	1'52.015	63	1'51.729	63	1'51.364	63	1'51.787	63	1'52.926	63	1'53.101	
5 ^o	61	4'544 2'05.217	61	4'063 2'00.737	46	1'52.118	63	1'52.908	63	1'51.363	63	1'51.236	63	1'52.152	61	21.079 1'53.726	61	23.856 1'51.543	61	26.649 1'51.789	20	28.564 1'51.124	20	29.488 1'50.904	20	30.214 1'51.435	20	32.420 1'51.553	20	35.381 1'52.155	99	37.091 1'50.626	20	34.330 1'52.12	
6 ^o	46	6'198 2'06.871	46	5'336 2'02.01	63	1'53.109	20	15.604 1'53.261	20	18.926 1'52.085	20	17.453 1'51.152	20	18.806 1'51.157	20	21.371 1'51.289	20	24.881 1'52.276	20	26.776 1'50.891	61	31.834 1'54.521	61	33.715 1'51.861	61	35.289 1'52.283	99	37.239 1'49.399	99	37.318 1'49.273	20	37.859 1'53.331	69	1'35.906 3'24.442	
7 ^o	66	7'060 2'07.733	63	6'454 2'03.128	20	11.623 1'54.37	46	17.646 1'59.855	66	36.060 1'58.637	99	36.936 1'49.785	99	38.500 1'51.368	99	39.024 1'49.248	99	39.194 1'48.936	99	39.444 1'49.246	99	39.273 1'49.165	99	38.635 1'49.342	99	37.187 1'49.261	61	39.208 1'53.266	61	41.851 1'51.837	61	50.020 1'59.022	3	1 va. 1'56.81	
8 ^o	3	8'549 2'09.222	20	7'636 2'04.31	66	1'58.75	66	26.186 1'57.679	3	36.128 1'58.524	46	41.240 1'52.116	46	43.376 1'51.94	46	47.215 1'52.563	46	50.006 1'51.557	46	54.225 1'53.215	46	57.110 1'52.221	46	59.978 1'52.848	46	1'01.757 1'52.488	3	1'44.212 1'57.328	3	1 va. 1'58.443	3	1 va. 1'57.313	66	1 va. 1'58.783	
9 ^o	99	9'094 2'09.767	66	9'420 2'06.094	3	18.158 1'58.246	3	26.367 1'57.489	99	39.776 1'51.074	3	42.363 1'58.86	3	49.880 1'57.321	3	58.346 1'57.19	3	1'06.665 1'57.085	3	1'14.737 1'57.068	3	1'22.590 1'57.189	3	1'29.603 1'56.993	3	1'36.231 1'57.337	66	1'46.406 1'57.725	66	1 va. 1'57.763	66	1 va. 1'57.142	61	1 va. 3'43.078	
10 ^o	63	9'413 2'10.886	3	10'295 2'06.969	12	25.330 2'00.981	12	35.497 1'59.447	46	41.749 2'12.866	66	43.671 2'00.236	66	51.307 1'57.44	66	59.859 1'57.276	66	1'08.320 1'57.227	66	1'16.498 1'57.174	66	1'24.505 1'57.343	66	1'31.591 1'57.066	66	1'38.028 1'57.146	46	1 va. 2'39.756	12	1 va. 1'59.114	12	1 va. 2'00.739	12	1 va. 2'08.067	
11 ^o	12	10'142 2'10.815	12	14.732 2'11.406	29	27.932 2'02.864	99	37.465 1'52.524	12	46.455 1'59.721	12	52.637 1'58.807	12	1'01.723 1'58.89	12	1'12.161 1'59.162	12	1'22.754 1'59.359	12	1'32.739 1'58.981	12	1'42.690 1'59.287	12	1 va. 1'59.515	12	1 va. 1'59.358	12	1 va. 1'59.88	17	1 va. 2'07.214	29	1 va. 1'59.226	29	1 va. 2'05.388	
12 ^o	17	10'409 2'11.082	17	14.829 2'11.503	17	28.512 2'04.066	29	39.887 2'01.235	29	51.353 2'00.229	29	58.750 2'00.022	29	1'09.166 2'00.22	29	1'20.296 1'59.854	17	1'31.662 1'59.498	17	1'41.937 1'59.271	17	1'59.578 1'59.271	17	1 va. 1'59.787	17	1 va. 1'58.855	17	1 va. 1'58.769	15	1 va. 2'07.364	17	1 va. 3'17.93	17	1 va. 1'59.693	
13 ^o	25	10'703 2'11.376	29	15.451 2'12.125	25	28.891 2'02.039	25	41.675 2'02.064	25	52.751 1'59.839	17	1'00.266 1'59.478	17	1'10.329 1'59.867	17	1'20.930 1'59.325	15	1'34.719 1'59.959	15	1'45.905 2'00.182	15	1 va. 1'59.67	15	1 va. 1'59.271	15	1 va. 1'59.469	15	1 va. 2'02.195	29	1 va. 1'59.949	15	2 va. 3'20.468	15	2 va. 1'59.523	
14 ^o	15	10'918 2'11.591	25	17.235 2'13.909	15	30.763 2'02.988	17	42.438 2'03.206	17	53.413 1'59.738	15	1'01.876 1'59.978	15	1'12.189 2'00.117	15	1'23.526 2'00.061	29	1'36.228 2'04.698	10	1 va. 2'01.614	10	1 va. 2'01.785	10	1 va. 2'01.05	10	1 va. 2'00.86	10	1 va. 1'59.822	10	1 va. 2'15.555	10	2 va. 3'07.584	10	2 va. 2'02.656	
15 ^o	29	11'201 2'11.874	15	18.158 2'14.832	99	34.221 2'21.162	15	42.917 2'01.434	15	54.523 2'00.369	10	1'07.494 2'01.035	10	1'19.059 2'01.369	10	1'31.828 2'01.493	10	1'43.476 2'00.414	9	1 va. 2'02.452	9	1 va. 2'01.416	29	1 va. 2'00.532	29	1 va. 1'59.861	29	1 va. 1'59.632	9	1 va. 2'09.085	9	2 va. 3'07.594	9	2 va. 2'02.42	
16 ^o	10	14'029 2'14.702	9	20.679 2'17.353	10	34.366 2'03.43	10	46.252 2'01.166	10	59.084 2'01.595	9	1'13.439 2'02.691	9	1'25.736 2'02.101	9	1'39.019 2'02.007	9	1 va. 2'01.709	29	1 va. 2'22.045	29	1 va. 2'00.345	9	1 va. 2'04.87	9	1 va. 2'01.34	9	1 va. 2'01.411							
17 ^o	9	14'377 2'15.050	10	21.319 2'17.993	9	35.520 2'05.224	9	49.527 2'03.287	9	1'03.373 2'02.609	25	1'17.217 2'17.091																							



Autodromo di Monza

RACE 2

LAP CHART

02/10/2016

Order	17 ^a	18 ^a	19 ^a	20 ^a	21 ^a	22 ^a	23 ^a	24 ^a	25 ^a	26 ^a	27 ^a	28 ^a	29 ^a	30 ^a	31 ^a	32 ^a
1 ^o	2 1'49.504	2 1'49.328	2 1'55.492	27 1'50.334	27 1'50.129	27 1'50.258	27 1'50.979	27 1'50.552	27 1'51.053	27 1'54.743	27 1'54.37	27 1'55.531	27 1'55.452	27 1'56.322	27 1'53.644	27 1'54.593
2 ^o	63 35.748 1'51.601	63 47.866 2'01.446	27 1'41.510 1'51.835	69 1.859 1'51.893	69 8.588 1'56.858	69 10.531 1'52.201	69 12.067 1'52.515	69 15.396 1'53.881	2 28.325 1'54.468	2 25.556 1'51.974	2 23.509 1'52.323	2 19.742 1'51.764	2 15.875 1'51.585	2 11.377 1'51.824	2 9.419 1'51.686	2 6.096 1'51.27
3 ^o	99 38.563 1'56.546	69 1'44.325 1'53.304	69 1'41.810 1'52.977	2 11.842 3'43.686	2 17.540 1'55.827	2 20.899 1'53.617	2 22.653 1'52.733	2 24.910 1'52.809	99 32.486 1'49.861	99 26.964 1'49.221	20 29.488 1'51.351	20 25.172 1'51.215	20 20.579 1'50.859	20 14.363 1'50.106	20 11.078 1'50.359	61 20.334 1'50.294
4 ^o	20 44.477 1'59.835	27 1'45.167 1'49.899	20 2'10.925 1'51.189	20 30.347 1'51.266	20 31.377 1'51.159	20 32.265 1'51.146	20 32.968 1'51.682	99 33.678 1'50.091	20 35.650 1'51.48	20 32.507 1'51.6	61 45.653 1'51.052	61 40.432 1'50.31	61 34.956 1'49.976	61 28.386 1'49.752	61 24.633 1'49.891	
5 ^o	69 1'40.349 1'54.131	20 1 via. 3'20.079	63 2'17.403 3'25.029	99 36.962 1'50.598	99 36.504 1'49.671	99 35.598 1'49.352	99 34.139 1'49.52	20 35.223 1'52.607	63 46.105 1'52.304	63 43.488 1'52.126	63 1'28.190 2'39.072	63 1'44.211 2'11.552	63 1 via. 2'11.203	63 1 via. 2'13.023	63 1 via. 2'09.998	
6 ^o	27 1'44.596 3'34.284	3 1 via. 2'03.166	99 2'18.208 1'50.216	63 39.172 1'53.613	63 40.989 1'51.946	63 42.917 1'52.186	63 43.573 1'51.635	63 44.854 1'51.833	61 53.819 1'50.068	61 48.971 1'49.895	99 1 via. 3'58.64	3 1 via. 1'58.625	3 1 via. 1'59.047	3 1 via. 1'59.112	3 1 via. 1'59.233	
7 ^o	3 1 via. 1'56.797	99 1 via. 3'34.249	61 2'36.151 1'50.37	61 54.690 1'50.383	61 54.834 1'50.273	61 54.996 1'50.42	61 54.341 1'50.324	61 54.804 1'51.015	3 1 via. 1'59.428	3 1 via. 1'59.094	3 1 via. 1'58.77	66 1 via. 1'59.525	66 1 via. 1'59.752	66 1 via. 2'00.107	66 1 via. 2'00.144	
8 ^o	66 1 via. 2'03.141	61 1 via. 1'50.744	3 1 via. 3'25.626	3 1 via. 1'59.973	3 1 via. 1'59.708	3 1 via. 1'59.172	3 1 via. 1'59.551	3 1 via. 1'59.196	66 1 via. 1'58.724	66 1 via. 1'59.577	66 1 via. 1'59.446	12 1 via. 1'57.929	12 1 via. 1'57.405	12 1 via. 1'57.23	12 1 via. 1'57.169	
9 ^o	61 1 via. 1'52.096	66 1 via. 3'26.01	66 1 via. 1'59.653	66 1 via. 1'59.545	66 1 via. 1'59.862	66 1 via. 1'58.812	66 1 via. 1'59.203	66 1 via. 1'59.255	12 1 via. 1'57.311	12 1 via. 1'57.87	12 1 via. 1'58.028	17 2 via. 1'59.976	17 2 via. 1'59.719	17 2 via. 1'59.389		
10 ^o	12 2 via. 3'23.096	12 1 via. 1'58.969	12 1 via. 1'58.624	12 1 via. 1'58.572	12 1 via. 1'57.665	12 1 via. 1'57.629	12 1 via. 1'58.272	12 1 via. 1'58.005	17 1 via. 2'00.429	17 2 via. 2'00.389	17 2 via. 2'01.897	15 2 via. 2'05.142	15 2 via. 2'00.768	15 2 via. 2'00.61		
11 ^o	17 2 via. 2'00.863	17 1 via. 1'59.742	17 1 via. 2'00.027	17 1 via. 1'59.627	17 1 via. 1'59.32	17 1 via. 1'59.358	17 1 via. 1'59.137	17 1 via. 1'59.107	15 2 via. 2'00.068	15 2 via. 2'00.996	15 2 via. 2'01.897	29 2 via. 1'57.38	29 2 via. 1'57.4	29 2 via. 1'57.927		
12 ^o	15 2 via. 1'58.81	15 1 via. 1'59.039	15 1 via. 1'59.837	15 1 via. 1'59.776	15 1 via. 1'59.57	15 1 via. 1'59.918	15 1 via. 1'59.736	15 2 via. 2'01.191	10 2 via. 2'01.469	10 2 via. 2'02.502	29 2 via. 1'59.361	10 2 via. 2'00.889	10 2 via. 2'00.99	10 2 via. 2'00.622		
13 ^o	10 2 via. 2'01.312	10 1 via. 2'01.072	10 1 via. 2'01.058	10 1 via. 2'01.013	10 1 via. 2'00.399	10 2 via. 2'00.449	10 2 via. 1'59.775	10 2 via. 2'00.01	29 2 via. 1'58.41	29 2 via. 1'57.303	10 2 via. 2'03.568	9 2 via. 2'02.568	9 2 via. 2'03.942	9 2 via. 2'03.438		
14 ^o	9 2 via. 2'01.459	9 1 via. 2'01.282	9 1 via. 2'01.87	9 1 via. 2'01.171	9 2 via. 2'02.038	9 2 via. 2'02.09	9 2 via. 1'58.48	29 2 via. 1'58.562	9 2 via. 2'01.901	9 2 via. 2'02.973	9 2 via. 2'01.903					
15 ^o	29 2 via. 3'38.877	29 1 via. 1'58.599	29 1 via. 1'57.861	29 2 via. 1'58.753	29 2 via. 1'58.992	29 2 via. 1'57.853	9 2 via. 2'02.732	9 2 via. 2'01.698								
16 ^o																
17 ^o																

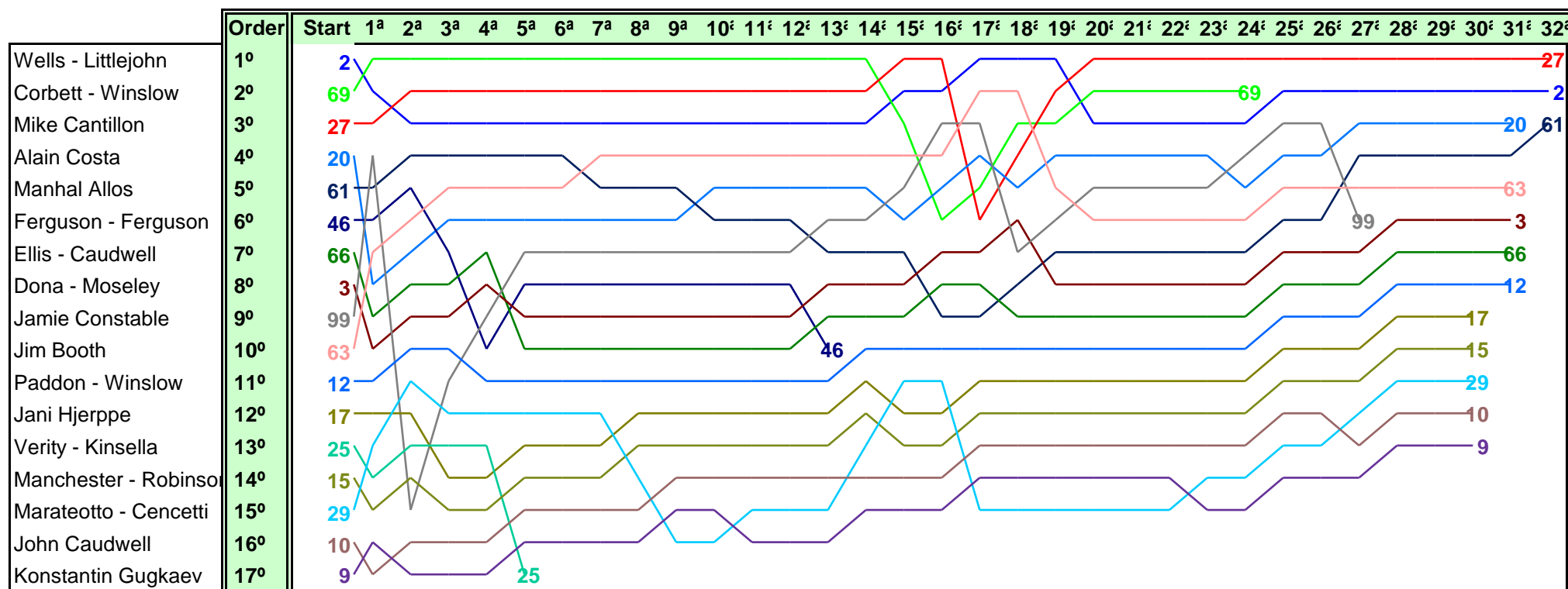


Autodromo di Monza

RACE 2

GRAPHIC LAP CHART

02/10/2016



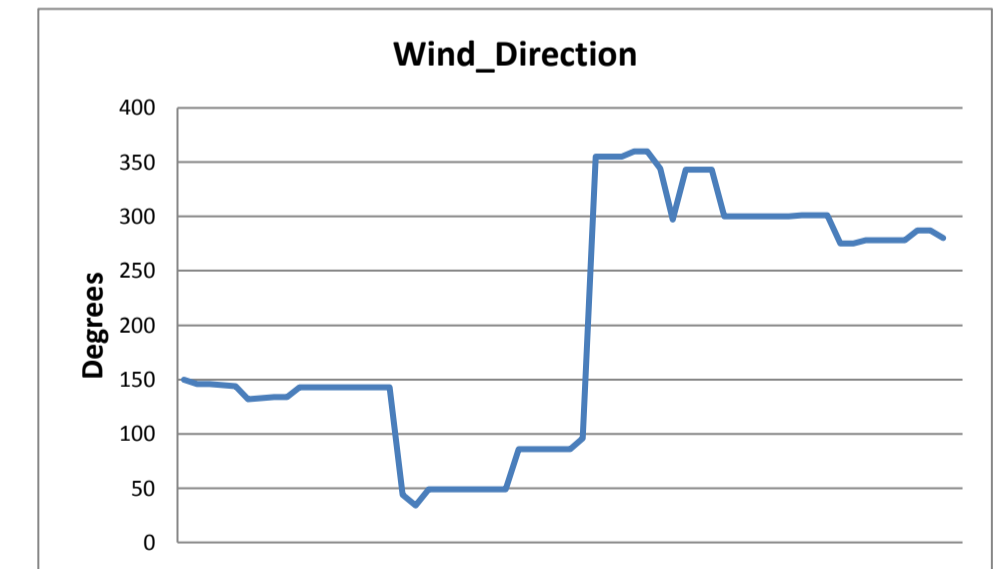
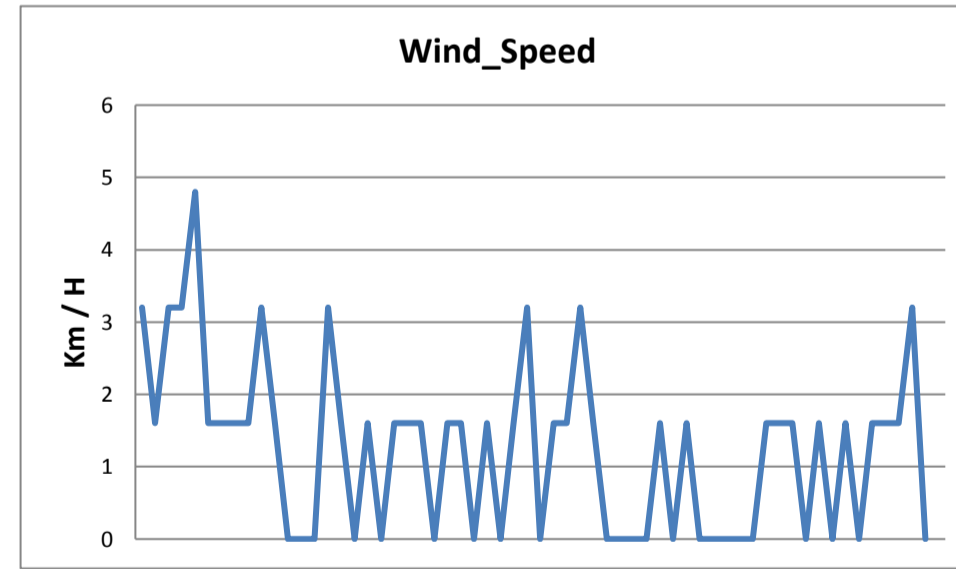
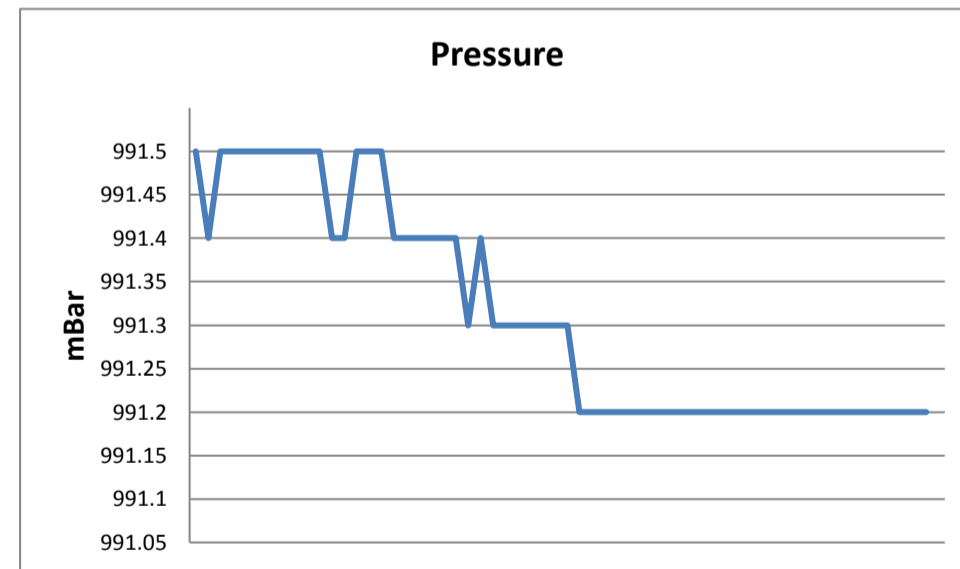
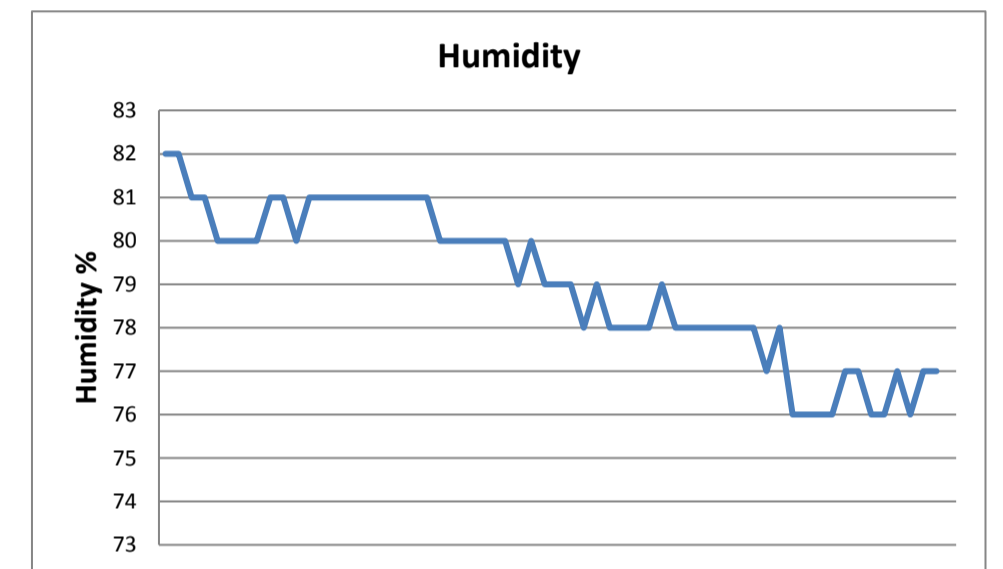
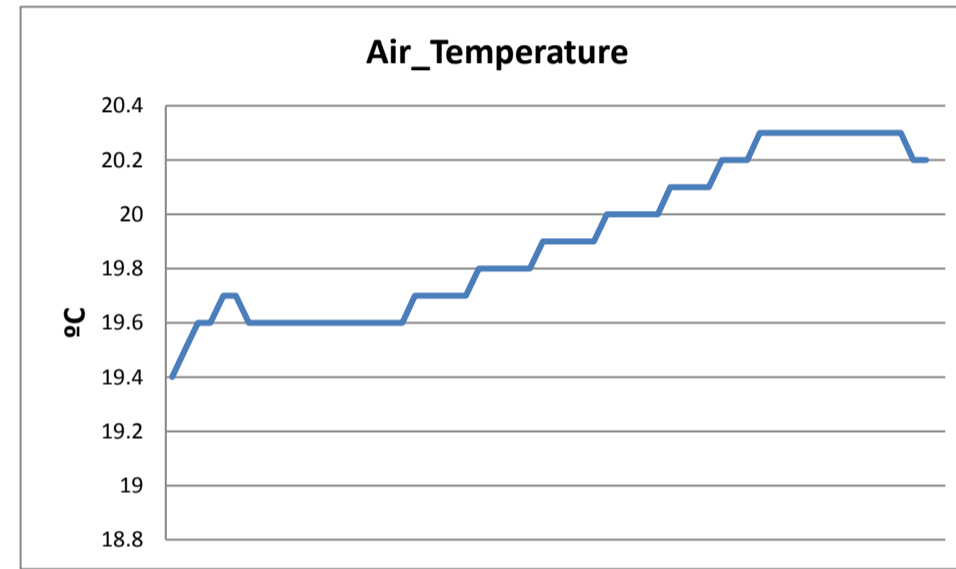
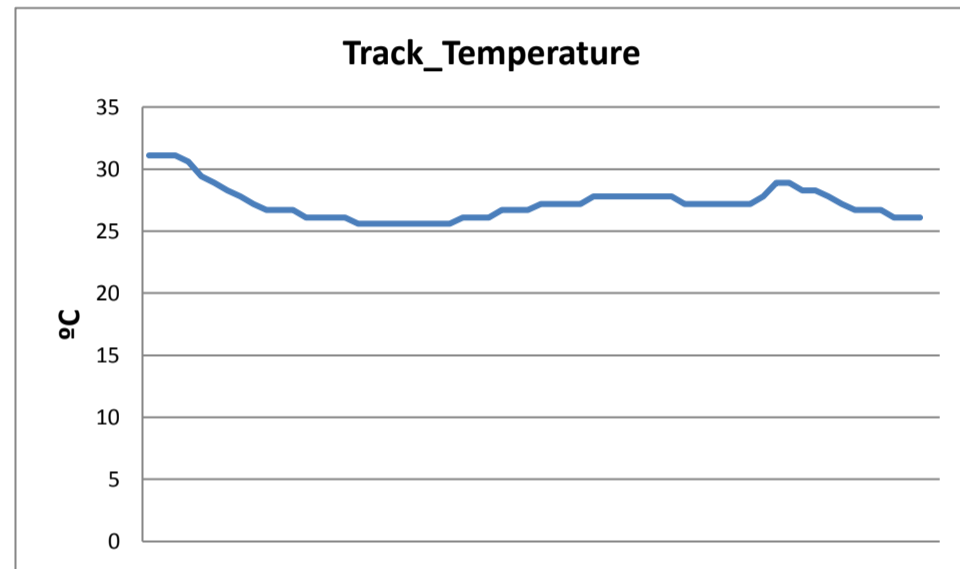


Autodromo di Monza

RACE 2

WEATHER REPORT

Track Status **WET**





Autodromo di Monza

2nd RACE

FINAL RESULTS

02/10/2016

Clas.	Nº	Entrant	Driver	Nat.	Driver 2	Nat.	Car Type	Cat.	Clas.	Laps	Total Time	Km/h.	Gap	Best Time	Km/h.	
1	27	Works	<u>Mike Cantillon</u>	GBR			RXC Spyder Turbo	M	1º	32	1.01'13.061	181.689		7	1'48.673	191.905
2	2	Nielsen	Tony Wells	GBR	<u>James Littlejohn</u>	GBR	SR8 RX	M	2º	32	1.01'19.157	181.388	6"096	18	1'49.328	190.755
3	20	Monza Garage	<u>Alain Costa</u>	MCO			SR8 RX	M	4º	31	59'29.546	181.116	1 Lap.	30	1'50.106	189.407
4	63	Works	Jim Booth	USA			RXC Spyder Turbo	M	5º	31	1.01'51.485	174.189	1 Lap.	10	1'50.822	188.183
5	3	Nielsen	<u>Riccardo Dona</u>	ITA	Stuart Moseley	GBR	SR3 RSX	S	1º	31	1.02'46.663	171.638	1 Lap.	17	1'56.797	178.556
6	66	Nielsen	<u>Bradley Ellis</u>	GBR	Brian Caudwell	GBR	SR3 RSX	S	2º	31	1.02'56.237	171.202	1 Lap.	11	1'57.066	178.146
7	12	Works	<u>Peter Paddon</u>	AUS	James Winslow	GBR	SR3 RSX	S	3º	31	1.03'06.488	170.739	1 Lap.	31	1'57.169	177.990
8	17	Nielsen	<u>Jani Hierppe</u>	FIN			SR3 RSX	S	4º	30	1.01'35.434	169.302	2 Lap.	13	1'58.769	175.592
9	15	Nielsen	<u>Jack Manchester</u>	GBR	James Robinson	GBR	SR3 RSX	S	5º	30	1.01'54.709	168.424	2 Lap.	17	1'58.810	175.531
10	29	RAW Motorsport	<u>Marcello Marateotto</u>	RUS	Marco Cencetti	RUS	SR3 RSX	S	6º	30	1.02'03.983	168.004	2 Lap.	26	1'57.303	177.786
11	10	Nielsen	<u>John Caudwell</u>	GBR			SR3 RSX	S	7º	30	1.02'14.549	167.529	2 Lap.	23	1'59.775	174.117
12	9	Works	<u>Konstantin Gugkaev</u>	RUS			SR3 RSX	S	8º	30	1.02'38.634	166.456	2 Lap.	20	2'01.171	172.111

NOT CLASSIFIED

13	99	Works	<u>Jamie Constable</u>	GBR			RXC Spyder Turbo	M	6º	27	54'08.753	173.322	5 Lap.	8	1'48.936	191.441
14	69	Monza Garage	John Corbett	AUS	<u>James Winslow</u>	GBR	RXC Spyder Turbo	M	7º	24	46'12.749	180.513	8 Lap.	7	1'48.724	191.815
15	46	RAW Motorsport	<u>Jeremy Ferguson</u>	GBR	Andrew Ferguson	GBR	RXC Spyder Turbo	M	8º	13	25'45.553	175.415	19 Lap.	8	1'51.557	186.943
16	25	360 Racing	Martin Verity	GBR	<u>Austin Kinsella</u>	GBR	SR3 RSX	S	9º	5	10'34.942	164.227	27 Lap.	4	1'59.839	174.024

Fastest lap Mike Cantillon 1'48.673 191.905 Km/h.

CAR 61 Excluded according Stewards decision number 11

Published at:.....

Track Status **WET**

Stewards:	Race Director:	Timekeeper: 
-----------	----------------	------------------------------------------------------------------------------------------------------